

MCX ALUMINIUM JULY



- Aluminium prices opened slightly higher in the last session and prices corrected gradually for first half of the session till low of 137. Later, prices recovered slightly for the remaining session till high of 137.80.
- Overall, prices have been rising gradually since last one month after breaking out from its short term declining trend line resistance.
- Prices are expected to rise further from these levels towards immediate resistance placed around 78.6% Fibonacci retracement of its fall from high of 145.50 till low of 125.60, which is placed at 141.20 level.
- On the lower side, immediate supports are placed around 137 and 134.50 levels.
- Buying around immediate support level is recommended in Aluminium for the day.

Today's Actionable

Commodity	Expiry	Action	Entry	Target	Stop loss
Aluminium	July	Buy	Around 137	141	134.50
Silver	Sep	Buy	Around 49050	49950	48450
RM seed	July	Buy	Around 4710	4850	4620

MCX

Commodity	Expiry	Close (Rs)	Change	% Change
GOLD	05 AUG 2020	48158	-109	-0.23
SILVER	04 SEP 2020	49204	-220	-0.45
CRUDEOIL	20 JUL 2020	3024	21	0.7
NATURALGAS	28 JUL 2020	129.2	1.3	1.02
COPPER	31 JUL 2020	464.6	-0.8	-0.17
NICKEL	31 JUL 2020	976.2	-4.3	-0.44
ALUMINIUM	31 JUL 2020	137.3	-0.95	-0.69
LEAD	31 JUL 2020	143.15	-0.6	-0.42
ZINC	31 JUL 2020	162.6	-1.65	-1
COTTON	31 JUL 2020	15880	-120	-0.75

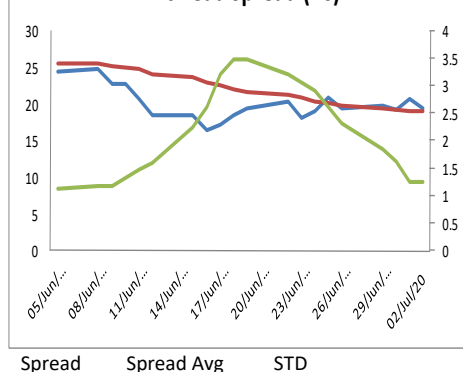
NCDEX

Commodity	Expiry	Close (Rs)	Change	% Change
GUARGUM5	20 JUL 2020	5372	-16	-0.3
GUARSEED10	20 JUL 2020	3618	-12	-0.33
CHANA	20 JUL 2020	4181	-11	-0.26
CASTOR	17 JUL 2020	3926	16	0.41
RMSEED	20 JUL 2020	4717	25	0.53
SYBEANIDR	20 JUL 2020	3768	12	0.32
SYOREF	20 JUL 2020	809.2	0.1	0.01
COCUDAKL	17 JUL 2020	1936	-59	-2.96
JEERAUNJHA	20 JUL 2020	13685	45	0.33
TMCFCGRNZM	17 JUL 2020	5674	-68	-1.18

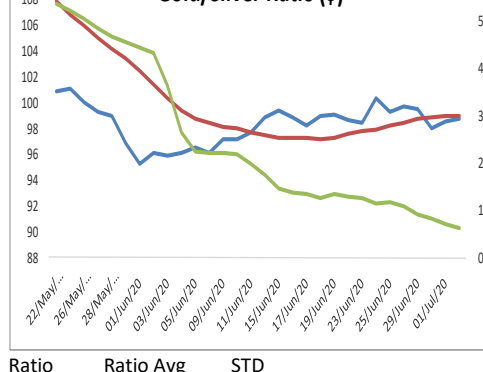
GLOBAL

Exchange	Commodity	Close (\$)	Change	% Change
Comex	Gold	1,789.20	9.30	0.52%
Comex	Silver	18.32	0.10	0.53%
Nymex	Crude Oil WTI	40.39	0.57	1.43%
ICE	Brent Oil	42.84	0.81	1.93%
Nymex	Natural Gas	1.73	0.06	3.29%
LME	Copper	6,093.50	37.50	0.62%
LME	Nickel	12,927.50	70.00	0.54%
LME	Aluminium	1,624.25	0.75	0.05%
LME	Lead	1,773.50	-4.25	-0.24%
LME	Zinc	2,043.00	-3.75	-0.18%

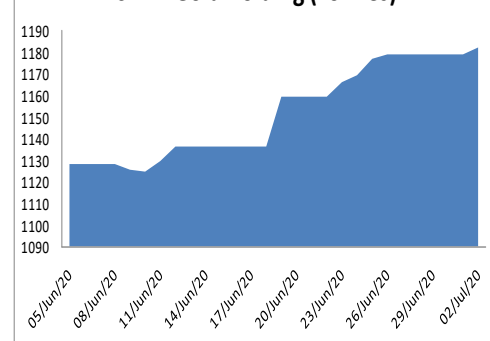
Zinc-Lead Spread (Rs)



Gold/Silver Ratio (\$)



SPDR Gold holding (Tonnes)



ECONOMIC DATA & EVENTS

TIME(IST)	COUNTRY	DATA & EVENTS	ACTUAL	FORECAST	PREVIOUS
-	-	-	-	-	-
-	-	-	-	-	-
-	-	-	-	-	-
-	-	-	-	-	-
-	-	-	-	-	-
-	-	-	-	-	-
-	-	-	-	-	-
-	-	-	-	-	-
-	-	-	-	-	-

DAILY PIVOT LEVELS

Symbol	Expiry	LTP	S2	S1	Pivot	R1	R2
GOLD	INTL. SPOT (\$)	1777	1749	1763	1771	1785	1794
GOLD	05 AUG 2020	48158	47345	47752	48012	48419	48679
SILVER	INTL. SPOT (\$)	17.99	17.56	17.78	17.95	18.17	18.34
SILVER	04 SEP 2020	49204	48053	48629	49025	49601	49997
CRUDEOIL	20 JUL 2020	3024	2930	2977	3014	3061	3098
NATURALGAS	28 JUL 2020	129.2	123.5	126.4	128.7	131.6	133.9
COPPER	31 JUL 2020	464.6	458.5	461.5	465.5	468.5	472.5
NICKEL	31 JUL 2020	976.2	965.7	970.9	977.8	983.0	989.9
ALUMINIUM	31 JUL 2020	137.3	136.0	136.7	137.7	138.3	139.3
LEAD	31 JUL 2020	143.2	142.0	142.6	143.4	144.0	144.8
ZINC	31 JUL 2020	162.6	160.5	161.6	163.4	164.4	166.2
COTTON	31 JUL 2020	15880	15687	15783	15947	16043	16207
MENTHAOIL	31 JUL 2020	990.6	975.7	983.2	987.4	994.9	999.1
CPO	31 JUL 2020	664.5	652.7	658.6	663.1	669.0	673.5
CPO	31 AUG 2020	656.5	643.8	650.1	655.0	661.3	666.2
GUARGUM5	20 JUL 2020	5372	5329	5351	5375	5397	5421
GUARGUM5	20 AUG 2020	5414	5371	5393	5421	5443	5471
GUARSEED10	20 JUL 2020	3618	3593	3606	3622	3635	3651
GUARSEED10	20 AUG 2020	3588	3548	3568	3592	3612	3636
CHANA	20 JUL 2020	4181	4140	4161	4189	4210	4238
CHANA	20 AUG 2020	4211	4170	4191	4220	4241	4270
CASTOR	17 JUL 2020	3926	3891	3909	3925	3943	3959
CASTOR	20 AUG 2020	3958	3922	3940	3958	3976	3994
RMSEED	20 JUL 2020	4717	4664	4690	4709	4735	4754
RMSEED	20 AUG 2020	4679	4630	4654	4670	4694	4710
SYBEANIDR	20 JUL 2020	3768	3729	3749	3769	3789	3809
SYBEANIDR	20 AUG 2020	3744	3708	3726	3742	3760	3776
SYOREF	20 JUL 2020	809.2	803.9	806.5	809.3	811.9	814.7
SYOREF	20 AUG 2020	806.6	799.1	802.9	804.9	808.7	810.7
COCUDAKL	17 JUL 2020	1936	1888	1912	1960	1984	2032
COCUDAKL	20 AUG 2020	2026	1977	2001	2041	2065	2105
JEERAUNJHA	20 JUL 2020	13685	13618	13652	13678	13712	13738
JEERAUNJHA	20 AUG 2020	13745	13675	13710	13735	13770	13795
TMCFGRNZM	17 JUL 2020	5674	5577	5625	5701	5749	5825
TMCFGRNZM	20 AUG 2020	5708	5636	5672	5736	5772	5836

TEAM

ANALYST	DESIGNATION	EMAIL	TELEPHONE
Monil Shah, CMT	Sr. Technical Analyst – Equity & Forex	monilshah@way2wealth.com	+9122-61462980
Harish Jujarey	Sr. Technical Analyst – Equity, Forex & Commodity	harishjujarey@way2wealth.com	+9122-61462981
Mohit Agarwal	Technical Analyst – Forex & Commodity	mohitk@way2wealth.com	+9122-61462982

Disclaimer

Analyst Certification: I, Mohit Agarwal, the research analyst and author of this report, hereby certify that the views expressed in this research report accurately reflect our personal views about the subject securities, issuers, products, sectors or industries. It is also certified that no part of the compensation of the analyst(s) was, is, or will be directly or indirectly related to the inclusion of specific recommendations or views in this research. The analyst(s), principally responsible for the preparation of this research report, receives compensation based on overall revenues of the company (Way2Wealth Brokers Private Limited, hereinafter referred to as Way2Wealth) and has taken reasonable care to achieve and maintain independence and objectivity in making any recommendations.

It is confirmed that Mohit Agarwal, the author of this report has not received any compensation from the companies mentioned in the report in the preceding 12 months. Our research professionals are paid in part based on the profitability of Way2Wealth, which include earnings from other business. Neither Way2Wealth nor its directors, employees, agents or representatives shall be liable for any damages whether direct or indirect, incidental, special or consequential including lost revenue or lost profits that may arise from or in connection with the use of the information contained in this report.

This report is for the personal information of the authorized recipient and does not construe to be any investment, legal or taxation advice to you. Way2Wealth is not soliciting any action based upon it. Nothing in this research shall be construed as a solicitation to buy or sell any security or product, or to engage in or refrain from engaging in any such transaction. The contents of this material are general and are neither comprehensive nor appropriate for every individual and are solely for the informational purposes of the readers. This material does not take into account the specific objectives, financial situation or needs of an individual/s or a Corporate/s or any entity/s.

This research has been prepared for the general use of the clients of the Way2Wealth and must not be copied, either in whole or in part, or distributed or redistributed to any other person in any form. If you are not the intended recipient you must not use or disclose the information in this research in any way. Though disseminated to all the customers simultaneously, not all customers may receive this report at the same time. Way2Wealth will not treat recipients as customers by virtue of their receiving this report. The distribution of this document in other jurisdictions may be restricted by the law applicable in the relevant jurisdictions and persons into whose possession this document comes should inform themselves about, and observe any such restrictions.

The report is based upon information obtained from sources believed to be reliable, but we do not make any representation or warranty that it is accurate, complete or up to date and it should not be relied upon as such. Way2Wealth or any of its affiliates or employees makes no warranties, either express or implied of any kind regarding any matter pertaining to this report, including, but not limited to warranties of suitability, fitness for a particular purpose, accuracy, timeliness, completeness or non-infringement. We accept no obligation to correct or update the information or opinions in it. Way2Wealth or any of its affiliates or employees shall not be in any way responsible for any loss or damage that may arise to any person from any inadvertent error in the information contained in this report. The recipients of this report should rely on their own investigations. In no event shall Way2Wealth be liable for any damages of any kind, including, but not limited to, indirect, special, incidental, consequential, punitive, lost profits, or lost opportunity, whether or not Way2Wealth has advised of the possibility of such damages.

This material contains statements that are forward-looking; such statements are based upon the current beliefs and expectations and are subject to significant risks and uncertainties. Actual results may differ from those set forth in the forward-looking statements. These uncertainties include but are not limited to: the risk of adverse movements or volatility in the securities markets or in interest or foreign exchange rates or indices; adverse impact from an economic slowdown; downturn in domestic or foreign securities and trading conditions or markets; increased competition; unfavourable political and diplomatic developments; change in the governmental or regulatory policies; failure of a corporate event and such others. This is not an offer to buy or sell or a solicitation of an offer to buy or sell any security or instrument or to participate in any particular trading strategy. No part of this material may be copied or duplicated in any form by any means or redistributed without the written consent of Way2Wealth. In no event shall any reader publish, retransmit, redistribute or otherwise reproduce any information provided by Way2Wealth in any format to anyone. Way2Wealth and its affiliates, officers, directors and employees including persons involved in the preparation or issuance of this report may from time to time have interest in securities / positions, financial or otherwise in the securities related to the information contained in this report.