

### MCX ALUMINIUM AUGUST



- For Aluminium, we maintained our bullish stand when prices were trading near 199-200 for a target towards 208-210 levels. Post that prices rose towards 209.10 levels and after that, it seems to have started the profit booking move.
- The above daily chart shows that prices tested the channel resistance and has started to correct on downside. In last two sessions it has given negative close and formed bearish candlestick pattern.
- Moreover, it is back below the upper Bollinger bands now which suggest it can go through sideways to negative action as long as 209.50-210.00 is intact on upside.
- It is expected to correct towards 201-200 level where middle band is placed.
- In short, Aluminium August can see deeper correction as long as 209.50-210.00 is not taken out. On downside it can test 201-200 levels.

### Today's Actionable

Commodity	Expiry	Action	Entry	Target	Stop loss
RM Seed	Sep	Buy	Around 7850	8000	7750
Natural Gas	Aug	Buy	Around 308	320	300
Chana	Sep	Buy	Around 5080	5220	4990

### MCX

Commodity	Expiry	Close (Rs)	Change	% Change
GOLD	05 OCT 2021	47892	28	0.06
SILVER	03 SEP 2021	67601	-313	-0.46
CRUDEOIL	19 AUG 2021	5082	-156	-2.98
NATURALGAS	26 AUG 2021	309.8	9.8	3.27
COPPER	31 AUG 2021	729.35	-7.3	-0.99
NICKEL	31 AUG 2021	1460.5	-9.4	-0.64
ALUMINIUM	31 AUG 2021	204.3	-2.25	-1.09
LEAD	31 AUG 2021	176.75	-0.6	-0.34
ZINC	31 AUG 2021	244.5	-0.65	-0.27
COTTON	31 AUG 2021	27040	130	0.48

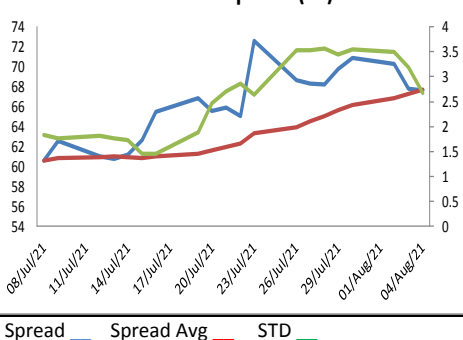
### NCDEX

Commodity	Expiry	Close (Rs)	Change	% Change
GUARGUM5	20 AUG 2021	7468	262	3.64
GUARSEED10	20 AUG 2021	4675	96	2.1
CHANA	20 AUG 2021	4980	-70	-1.39
CASTOR	20 AUG 2021	5636	14	0.25
RMSEED	20 AUG 2021	7897	163	2.11
SYBEANIDR	20 AUG 2021	9830	285	2.99
SYOREF	20 AUG 2021	1397.8	14.6	1.06
COCUDAKL	20 AUG 2021	3095	7	0.23
JEERAUNJHA	20 AUG 2021	13315	50	0.38
TMCFGRNZM	20 AUG 2021	7400	98	1.34

### GLOBAL

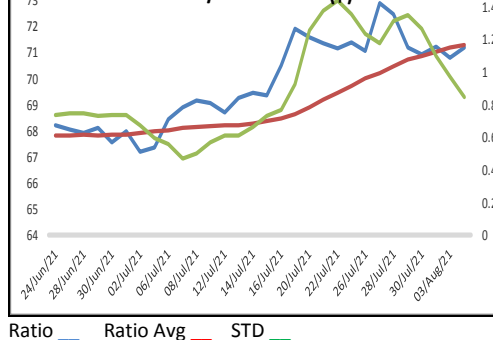
Exchange	Commodity	Close (\$)	Change	% Change
Comex	Gold	1,815.70	1.60	0.09%
Comex	Silver	25.50	-0.09	-0.33%
Nymex	Crude Oil WTI	68.36	-2.20	-3.12%
ICE	Brent Oil	70.62	-1.79	-2.47%
Nymex	Natural Gas	4.17	0.15	3.63%
LME	Copper	9,464.25	-93.75	-0.98%
LME	Nickel	19,257.50	-102.50	-0.53%
LME	Aluminium	2,564.25	-24.50	-0.95%
LME	Lead	2,372.75	-20.00	-0.84%
LME	Zinc	2,962.75	-12.25	-0.41%

### Zinc-Lead Spread (Rs)



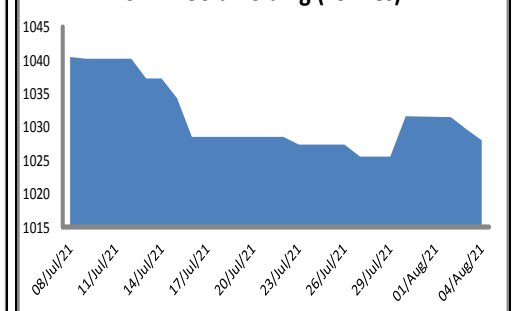
Spread — Spread Avg — STD —

### Gold/Silver Ratio (\$)



Ratio — Ratio Avg — STD —

### SPDR Gold holding (Tonnes)



ECONOMIC DATA & EVENTS						
TIME(IST)	COUNTRY	DATA & EVENTS	ACTUAL	FORECAST	PREVIOUS	
4:30 PM	GB	BoE QE Total (Aug)	-	875B	875B	
4:30 PM	GB	BoE Interest Rate Decision (Aug)	-	0.10%	0.10%	
6:00 PM	US	Continuing Jobless Claims	-	3,260K	3,269K	
6:00 PM	US	Initial Jobless Claims	-	384K	400K	
6:00 PM	US	Trade Balance (Jun)	-	-74.10B	-71.20B	
8:00 PM	US	Natural Gas Storage	-	19B	36B	
-	-	-	-	-	-	
-	-	-	-	-	-	
-	-	-	-	-	-	

DAILY PIVOT LEVELS							
Symbol	Expiry	LTP	S2	S1	Pivot	R1	R2
GOLD	INTL. SPOT (\$)	1812	1791	1802	1817	1827	1842
GOLD	05 OCT 2021	47892	47413	47653	48005	48245	48597
SILVER	INTL. SPOT (\$)	25.43	24.89	25.16	25.58	25.85	26.27
SILVER	03 SEP 2021	67601	66410	67005	67939	68534	69468
CRUDEOIL	19 AUG 2021	5082	4913	4997	5129	5213	5345
NATURALGAS	26 AUG 2021	309.8	296.1	303.0	307.6	314.5	319.1
COPPER	31 AUG 2021	729.4	719.4	724.4	732.0	737.0	744.6
NICKEL	31 AUG 2021	1460.5	1447.1	1453.8	1465.2	1471.9	1483.3
ALUMINIUM	31 AUG 2021	204.3	202.5	203.4	205.1	206.0	207.7
LEAD	31 AUG 2021	176.8	175.7	176.2	176.9	177.4	178.1
ZINC	31 AUG 2021	244.5	242.9	243.7	244.7	245.5	246.6
COTTON	31 AUG 2021	27040	26833	26937	27043	27147	27253
MENTHAOIL	31 AUG 2021	954.5	947.1	950.8	953.9	957.6	960.7
CPO	31 AUG 2021	1133.2	1105.5	1119.3	1131.9	1145.7	1158.3
CPO	30 SEP 2021	1115.4	1087.3	1101.3	1114.1	1128.1	1140.9
GUARGUM5	20 AUG 2021	7468	7147	7307	7401	7561	7655
GUARGUM5	20 SEP 2021	7590	7251	7420	7518	7687	7785
GUARSEED10	20 AUG 2021	4675	4544	4610	4665	4731	4786
GUARSEED10	20 SEP 2021	4780	4625	4703	4761	4839	4897
CHANA	20 AUG 2021	4980	4895	4937	4995	5037	5095
CHANA	20 SEP 2021	5088	5005	5047	5103	5145	5201
CASTOR	20 AUG 2021	5636	5576	5606	5638	5668	5700
CASTOR	17 SEP 2021	5680	5340	5510	5614	5784	5888
RMSEED	20 AUG 2021	7897	7634	7765	7838	7969	8042
RMSEED	20 SEP 2021	7919	7650	7785	7855	7990	8060
SYBEANIDR	20 AUG 2021	9830	9095	9463	9667	10035	10239
SYBEANIDR	20 SEP 2021	8880	8403	8642	8783	9022	9163
SYOREF	20 AUG 2021	1397.8	1377.9	1387.9	1397.9	1407.9	1417.9
SYOREF	20 SEP 2021	1378.5	1351.5	1365.0	1378.4	1391.9	1405.3
COCUDAKL	20 AUG 2021	3095	3036	3066	3114	3144	3192
COCUDAKL	20 SEP 2021	3103	3041	3072	3111	3142	3181
JEERAUNJHA	20 AUG 2021	13315	13165	13240	13285	13360	13405
JEERAUNJHA	20 SEP 2021	13535	13388	13462	13518	13592	13648
TMCFGRNZM	20 AUG 2021	7400	7188	7294	7366	7472	7544
TMCFGRNZM	20 SEP 2021	7490	7275	7383	7457	7565	7639

### TEAM

ANALYST	DESIGNATION	EMAIL	TELEPHONE
Monil Shah, CMT	AVP – Technical Analyst – Equity & Forex	<a href="mailto:monilshah@way2wealth.com">monilshah@way2wealth.com</a>	+9122-61462980
Harish Jujarey	Sr. Technical Analyst – Equity, Forex & Commodity	<a href="mailto:harishjujarey@way2wealth.com">harishjujarey@way2wealth.com</a>	+9122-61462981
Rakesh Gandhi	Technical Analyst – Forex & Commodity	<a href="mailto:rakeshgandhi@way2wealth.com">rakeshgandhi@way2wealth.com</a>	+9122-61462982

#### Disclaimer

**Analyst Certification:** I, Rakesh Gandhi, the research analyst and author of this report, hereby certify that the views expressed in this research report accurately reflect our personal views about the subject securities, issuers, products, sectors or industries. It is also certified that no part of the compensation of the analyst(s) was, is, or will be directly or indirectly related to the inclusion of specific recommendations or views in this research. The analyst(s), principally responsible for the preparation of this research report, receives compensation based on overall revenues of the company (Way2Wealth Brokers Private Limited, hereinafter referred to as Way2Wealth) and has taken reasonable care to achieve and maintain independence and objectivity in making any recommendations.

It is confirmed that Rakesh Gandhi, the author of this report has not received any compensation from the companies mentioned in the report in the preceding 12 months. Our research professionals are paid in part based on the profitability of Way2Wealth, which include earnings from other business. Neither Way2Wealth nor its directors, employees, agents or representatives shall be liable for any damages whether direct or indirect, incidental, special or consequential including lost revenue or lost profits that may arise from or in connection with the use of the information contained in this report.

This report is for the personal information of the authorized recipient and does not construe to be any investment, legal or taxation advice to you. Way2Wealth is not soliciting any action based upon it. Nothing in this research shall be construed as a solicitation to buy or sell any security or product, or to engage in or refrain from engaging in any such transaction. The contents of this material are general and are neither comprehensive nor appropriate for every individual and are solely for the informational purposes of the readers. This material does not take into account the specific objectives, financial situation or needs of an individual/s or a Corporate/s or any entity/s.

This research has been prepared for the general use of the clients of the Way2Wealth and must not be copied, either in whole or in part, or distributed or redistributed to any other person in any form. If you are not the intended recipient you must not use or disclose the information in this research in any way. Though disseminated to all the customers simultaneously, not all customers may receive this report at the same time. Way2Wealth will not treat recipients as customers by virtue of their receiving this report. The distribution of this document in other jurisdictions may be restricted by the law applicable in the relevant jurisdictions and persons into whose possession this document comes should inform themselves about, and observe any such restrictions.

The report is based upon information obtained from sources believed to be reliable, but we do not make any representation or warranty that it is accurate, complete or up to date and it should not be relied upon as such. Way2Wealth or any of its affiliates or employees makes no warranties, either express or implied of any kind regarding any matter pertaining to this report, including, but not limited to warranties of suitability, fitness for a particular purpose, accuracy, timeliness, completeness or non-infringement. We accept no obligation to correct or update the information or opinions in it. Way2Wealth or any of its affiliates or employees shall not be in any way responsible for any loss or damage that may arise to any person from any inadvertent error in the information contained in this report. The recipients of this report should rely on their own investigations. In no event shall Way2Wealth be liable for any damages of any kind, including, but not limited to, indirect, special, incidental, consequential, punitive, lost profits, or lost opportunity, whether or not Way2Wealth has advised of the possibility of such damages.

This material contains statements that are forward-looking; such statements are based upon the current beliefs and expectations and are subject to significant risks and uncertainties. Actual results may differ from those set forth in the forward-looking statements. These uncertainties include but are not limited to: the risk of adverse movements or volatility in the securities markets or in interest or foreign exchange rates or indices; adverse impact from an economic slowdown; downturn in domestic or foreign securities and trading conditions or markets; increased competition; unfavourable political and diplomatic developments; change in the governmental or regulatory policies; failure of a corporate event and such others. This is not an offer to buy or sell or a solicitation of an offer to buy or sell any security or instrument or to participate in any particular trading strategy. No part of this material may be copied or duplicated in any form by any means or redistributed without the written consent of Way2Wealth. In no event shall any reader publish, retransmit, redistribute or otherwise reproduce any information provided by Way2Wealth in any format to anyone. Way2Wealth and its affiliates, officers, directors and employees including persons involved in the preparation or issuance of this report may from time to time have interest in securities / positions, financial or otherwise in the securities related to the information contained in this report.