

S&P BSE SENSEX	54369.77 (+1.02%)
NIFTY 50	16258.80 (+0.79%)

Sector Indices	Close	% Change
NIFTY AUTO	10247	-0.93
NIFTY BANK	36028	2.33
NIFTY ENERGY	19405	0.10
NIFTY FMCG	36482	-0.93
NIFTY IT	30977	-0.61
NIFTY METAL	5760	-0.32
NIFTY MIDCAP 50	7686	-1.19
NIFTY PHARMA	14594	-0.37
NIFTY PSU BANK	2498	0.31
NIFTY REALTY	412	-1.67

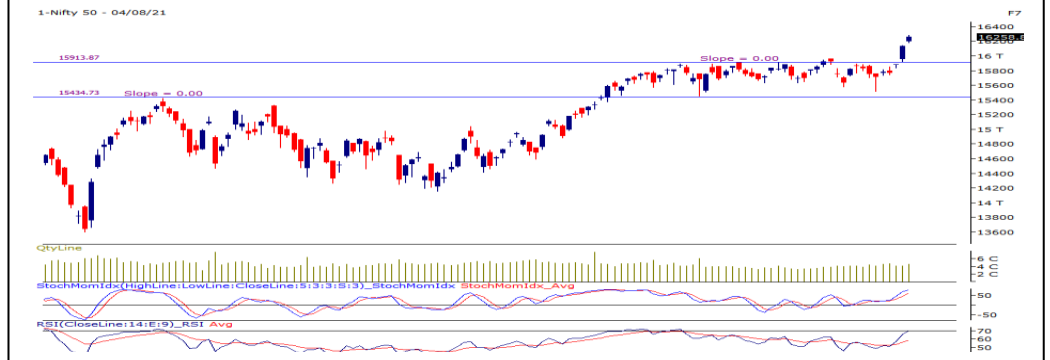
Key Levels - Nifty	
Support	16150 / 16060
Resistance	16300 / 16415

FII & DII Activities (Fig. in Cr)

Date	FII	DII
4-Aug-21	2,828.57	-411.36
3-Aug-21	2,116.60	-298.54
2-Aug-21	-1,539.88	1,505.82
30-Jul-21	-3,848.31	2,956.68
29-Jul-21	-866.26	2,046.96
28-Jul-21	-2,274.77	921.45
27-Jul-21	-1,459.08	729.96
26-Jul-21	-2,376.79	1,551.27
23-Jul-21	-163.31	2,187.80
22-Jul-21	-247.59	942.55

Key Levels - Bank Nifty	
Support	36000 / 35800
Resistance	36460 / 36850

Nifty Spot Chart



Technical Outlook

Nifty Index continued the up streak for the second day and settled at 16258 mark with nearby 0.80% gains. The strong move was majorly lead by Banking and financial stocks whereas all other sectoral indices remained under pressure. On the technical front, Index experienced hurdle near the opening higher around 16300 levels and therefore it consolidated within a narrow range thereafter. RSI (14) indicator has made sharp surge till 69 levels and stochastic oscillator has extended into overbought zone territory till 95 levels on daily scale. At present immediate support is placed at 16150 then 16060 levels and whereas resistance are seen around 16320 then 16600. Following mixed global cues, Domestic market are likely to start the day on flat note and looking at the daily chart structure, the overall trend still remains positive.

Bank Nifty Spot Chart



Technical Outlook

Bank Nifty continued to outperform other indices and zoomed 820 point or nearby two and half percent in the last session and settled at 36028 mark. Index has managed to cross the key hurdle of 36000 mark during last session. Index has popped out of the specified consolidation range and gave positive breakout. On applying long term trend channel the upside resistance are coming up around 37400 and whereas on the downside 35800 would be the immediate support and next level is around 35200. Momentum indicators stochastic and RSI (14) have moved up sharply in two sessions. Hence, Looking at above factors the positive trend is likely to intact for the day.

Stocks for Today

Name	Entry	Target	Stop loss
RELIANCE	Buy Around 2096	2150	2075
CUB	Buy Around 154	162	149
INDIGO	Sell Below 1640	1570	1680

Daily Pivot Levels For Nifty50 Stocks

ScripName	Support2	Support1	Pivot	Resist1	Resist2
ADANIPIRTS	695.2	685.4	705.1	714.9	724.8
ASIANPAINT	2992.5	2957.9	3028.7	3063.3	3099.5
AXISBANK	725.0	711.4	732.9	746.5	754.5
BAJAJ-AUTO	3809.9	3791.6	3824.0	3842.3	3856.3
BAJAJFINSV	14197.2	14099.4	14257.8	14355.6	14416.1
BAJFINANCE	6244.6	6157.3	6293.3	6380.6	6429.3
BHARTIARTL	567.5	554.9	574.8	587.4	594.7
BPCL	458.3	453.2	461.6	466.7	470.1
BRITANNIA	3543.1	3513.1	3561.1	3591.1	3609.1
CIPLA	921.3	914.4	925.4	932.3	936.5
COALINDIA	143.3	142.3	144.0	145.0	145.8
DIVISLAB	4931.3	4855.7	4975.6	5051.2	5095.5
DRREDDY	4699.1	4676.5	4714.3	4736.9	4752.0
EICHERMOT	2606.0	2562.6	2630.4	2673.8	2698.2
GRASIM	1558.0	1523.5	1578.9	1613.4	1634.3
HCLTECH	1028.0	1016.5	1035.5	1046.9	1054.4
HDFC	2500.4	2446.2	2530.2	2584.4	2614.2
HDFCBANK	1416.5	1398.3	1428.2	1446.4	1458.1
HDFCLIFE	668.6	663.4	671.8	677.0	680.2
HEROMOTOCO	2794.9	2770.8	2808.5	2832.6	2846.2
HINDALCO	442.4	436.0	446.6	453.0	457.3
HINDUNILVR	2344.3	2301.8	2368.7	2411.2	2435.6
ICICIBANK	680.7	671.1	686.3	696.0	701.6
INDUSINDBK	997.5	972.9	1011.2	1035.8	1049.6
INFY	1641.0	1626.8	1649.8	1664.0	1672.9
IOC	105.5	104.8	106.0	106.7	107.2
ITC	207.3	204.6	209.1	211.7	213.5
JSWSTEEL	730.5	720.6	738.2	748.1	755.8
KOTAKBANK	1670.7	1655.7	1680.0	1694.9	1704.2
LT	1616.9	1599.4	1627.8	1645.3	1656.2
M&M	760.0	749.2	766.4	777.2	783.6
MARUTI	7116.7	7033.9	7168.8	7251.6	7303.7
NESTLEIND	17832.1	17380.0	18106.0	18558.1	18832.0
NTPC	116.6	115.6	117.6	118.6	119.6
ONGC	116.0	114.0	117.1	119.0	120.1
POWERGRID	172.0	169.5	173.6	176.1	177.7
RELIANCE	2071.0	2054.2	2081.0	2097.8	2107.8
SBILIFE	1106.0	1080.4	1120.5	1146.1	1160.6
SBIN	437.4	428.4	442.7	451.7	457.0
SHREECEM	28938.4	28673.3	29174.2	29439.3	29675.1
SUNPHARMA	771.9	749.0	788.1	811.0	827.2
TATACONSUM	761.2	754.8	766.0	772.4	777.2
TATAMOTORS	299.4	295.2	302.0	306.2	308.8
TATASTEEL	1391.4	1375.6	1406.1	1421.9	1436.6
TCS	3239.2	3193.6	3264.6	3310.3	3335.7
TECHM	1214.2	1202.1	1222.1	1234.2	1242.1
TITAN	1793.3	1746.3	1824.1	1871.1	1901.9
ULTRACEMCO	7678.7	7514.1	7773.0	7937.5	8031.8
UPL	782.4	774.3	788.7	796.8	803.1
WIPRO	594.4	589.3	599.2	604.2	609.0

TEAM

Way2Wealth Brokers Pvt. Ltd. (CIN U67120KA2000PTC027628) SEBI Rgn. No. : INH200002739.

Registered Office:Rukmini Towers, 3rd& 4thFloor, # 3/1, Platform Road, Sheshadripuram, Bangalore - 560 020,

Website: www.way2wealth.com Email: research@way2wealth.com

Way2wealthResearch is also available on Bloomberg WTWL<GO>

ANALYST	DESIGNATION	EMAIL	TELEPHONE
Monil Shah, CMT	AVP – Technical Analyst – Equity & Forex	monilshah@way2wealth.com	+9122-61462980
Harish Jujarey	Sr. Technical Analyst – Equity, Forex, Commodity	harishjujarey@way2wealth.com	+9122-61462981
Rakesh Gandhi	Technical Analyst – Forex & Commodity	rakeshgandhi@way2wealth.com	+9122-61462982

Disclaimer

Analyst Certification: I, Harish Jujarey the research analyst and author of this report, hereby certify that the views expressed in this research report accurately reflect our personal views about the subject securities, issuers, products, sectors or industries. It is also certified that no part of the compensation of the analyst(s) was, is, or will be directly or indirectly related to the inclusion of specific recommendations or views in this research. The analyst(s), principally responsible for the preparation of this research report, receives compensation based on overall revenues of the company (Way2Wealth Brokers Private Limited, hereinafter referred to as Way2Wealth) and has taken reasonable care to achieve and maintain independence and objectivity in making any recommendations.

It is confirmed that Harish Jujarey the author of this report has not received any compensation from the companies mentioned in the report in the preceding 12 months. Our research professionals are paid in part based on the profitability of Way2Wealth, which include earnings from other business. Neither Way2Wealth nor its directors, employees, agents or representatives shall be liable for any damages whether direct or indirect, incidental, special or consequential including lost revenue or lost profits that may arise from or in connection with the use of the information contained in this report.

This report is for the personal information of the authorized recipient and does not construe to be any investment, legal or taxation advice to you. Way2Wealth is not soliciting any action based upon it. Nothing in this research shall be construed as a solicitation to buy or sell any security or product, or to engage in or refrain from engaging in any such transaction. The contents of this material are general and are neither comprehensive nor appropriate for every individual and are solely for the informational purposes of the readers. This material does not take into account the specific objectives, financial situation or needs of an individual/s or a Corporate/s or any entity/s.

This research has been prepared for the general use of the clients of the Way2Wealth and must not be copied, either in whole or in part, or distributed or redistributed to any other person in any form. If you are not the intended recipient you must not use or disclose the information in this research in any way. Though disseminated to all the customers simultaneously, not all customers may receive this report at the same time. Way2Wealth will not treat recipients as customers by virtue of their receiving this report. The distribution of this document in other jurisdictions may be restricted by the law applicable in the relevant jurisdictions and persons into whose possession this document comes should inform themselves about, and observe any such restrictions.

The report is based upon information obtained from sources believed to be reliable, but we do not make any representation or warranty that it is accurate, complete or up to date and it should not be relied upon as such. Way2Wealth or any of its affiliates or employees makes no warranties, either express or implied of any kind regarding any matter pertaining to this report, including, but not limited to warranties of suitability, fitness for a particular purpose, accuracy, timeliness, completeness or non-infringement. We accept no obligation to correct or update the information or opinions in it. Way2Wealth or any of its affiliates or employees shall not be in any way responsible for any loss or damage that may arise to any person from any inadvertent error in the information contained in this report. The recipients of this report should rely on their own investigations. In no event shall Way2Wealth be liable for any damages of any kind, including, but not limited to, indirect, special, incidental, consequential, punitive, lost profits, or lost opportunity, whether or not Way2Wealth has advised of the possibility of such damages.

This material contains statements that are forward-looking; such statements are based upon the current beliefs and expectations and are subject to significant risks and uncertainties. Actual results may differ from those set forth in the forward-looking statements. These uncertainties include but are not limited to: the risk of adverse movements or volatility in the securities markets or in interest or foreign exchange rates or indices; adverse impact from an economic slowdown; downturn in domestic or foreign securities and trading conditions or markets; increased competition; unfavourable political and diplomatic developments; change in the governmental or regulatory policies; failure of a corporate event and such others. This is not an offer to buy or sell or a solicitation of an offer to buy or sell any security or instrument or to participate in any particular trading strategy. No part of this material may be copied or duplicated in any form by any means or redistributed without the written consent of Way2Wealth. In no event shall any reader publish, retransmit, redistribute or otherwise reproduce any information provided by Way2Wealth in any format to anyone. Way2Wealth and its affiliates, officers, directors and employees including persons involved in the preparation or issuance of this report may from time to time have interest in securities / positions, financial or otherwise in the securities related to the information contained in this report.