

**SENSEX** 35673.25 (+1.02%)  
**NIFTY** 10693.70 (+0.87%)

Sector Indices	Close	% Change
NIFTY AUTO	8870	0.89
NIFTY BANK	26594	1.51
NIFTY ENERGY	14014	0.17
NIFTY FMCG	29674	0.63
NIFTY IT	14663	-0.21
NIFTY METAL	3071	-0.46
NIFTY MIDCAP 50	4631	0.21
NIFTY PHARMA	8683	-0.04
NIFTY PSU BANK	2825	-0.04
NIFTY REALTY	230	0.50

### Key Levels - Nifty

Support	10640 / 10588
Resistance	10748 / 10800

### FII & DII Activities (Fig. in Cr)

Date	FII	DII
07-Dec-18	-817.40	242.56
06-Dec-18	72.47	-389.78
05-Dec-18	-357.82	-791.59
04-Dec-18	-55.89	-521.38
03-Dec-18	293.12	-806.45
30-Nov-18	-332.62	1,489.65
29-Nov-18	823.47	973.31
28-Nov-18	961.26	-330.29
27-Nov-18	811.52	31.21
26-Nov-18	62.74	351.78

### Key Levels - Bank Nifty

Support	26400 / 26190
Resistance	26800 / 27037

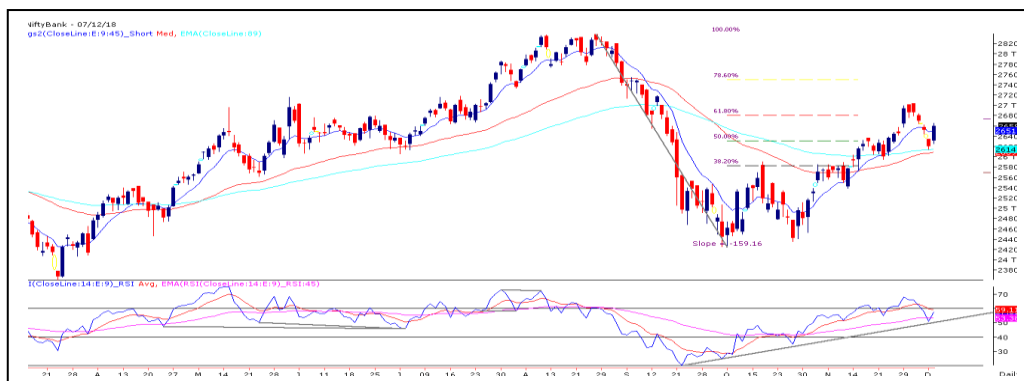
### Nifty Spot Chart



### Technical Outlook

The concluding session of week began with a gap up opening as indicated by the SGX Nifty. The early morning gap got sold-into and nifty descend during the first half. However, nifty somehow managed to hold the Thursday's low of 10588.25 and rebound sharply during penultimate hour of trade. In the process, nifty ended the session tad below the 10700 mark. The 78.6% retracement on nifty played a role of sheet anchor as we saw decent recovery in Friday's trade. At this juncture, the Thursday's gap area of 10722.65 – 10747.95 likely to act as a near term resistance whereas support level seen near 10640 – 10588 levels respectively.

### Bank Nifty Spot Chart



### Technical Outlook

On Friday, the Nifty Bank too opened on cheerful note and saw decent traction during the first half mainly on the back of mammoth buying interest in the KOTAKBANK. Subsequently, the other index heavyweights started showing signs of rally which led to extension of morning rally. In the process, index registered its outperformance by gaining nearly 1.51%. Due to Friday's rally, index filled the gap area formed on Wednesday & Thursday. For the day, 26800 – 27037 are near term resistance whereas 26400 – 26190 are near term support for index.

### Stocks For Today

Name	Entry	Target	Stop loss
BAJAJ-AUTO	Buy Around 2770	2840	2729
SIEMENS	Buy Around 943	982	924
GAIL	Sell Around 337	320	345

DailyPivotLevelsForNifty50Stocks					
ScripName	Support2	Support 1	Pivot	Resist 1	Resist2
ADANI PORTS	359.8	366.6	370.6	377.5	381.5
ASIAN PAINT	1288.1	1303.4	1313.7	1329.0	1339.3
AXIS BANK	585.0	594.7	602.1	611.9	619.3
BAJAJ-AUTO	2686.8	2734.1	2763.5	2810.8	2840.2
BAJAJ FINSV	5589.4	5717.3	5796.4	5924.3	6003.5
BAJ FINANCE	2382.7	2433.8	2465.8	2516.9	2548.9
BHARTIARTL	295.1	300.0	303.9	308.9	312.8
BPCL	316.4	320.9	325.9	330.4	335.4
CIPLA	500.1	506.9	518.8	525.5	537.4
COAL INDIA	232.7	234.8	238.6	240.8	244.6
DRREDDY	2609.3	2646.8	2680.6	2718.1	2751.9
EICHER MOT	21750.2	22059.7	22272.9	22582.5	22795.7
GAIL	321.3	328.0	337.5	344.2	353.7
GRASIM	785.6	793.9	801.5	809.8	817.4
HCLTECH	899.9	930.9	965.5	996.5	1031.0
HDFC	1915.1	1933.2	1947.3	1965.4	1979.5
HDFC BANK	2066.7	2090.9	2104.4	2128.6	2142.1
HEROMOTOCO	3004.4	3035.6	3056.3	3087.5	3108.2
HINDALCO	214.1	216.4	218.9	221.3	223.8
HINDPETRO	219.4	222.1	226.2	228.9	233.0
HINDUNILVR	1775.7	1800.0	1816.4	1840.7	1857.0
IBULHSGFIN	682.5	698.9	724.0	740.4	765.5
ICICIBANK	342.2	346.7	349.9	354.4	357.6
INDUSINDBK	1510.3	1538.6	1559.3	1587.5	1608.2
INFRA TEL	248.4	250.6	253.8	256.0	259.2
INFY	657.9	670.4	678.1	690.5	698.2
IOC	125.8	127.8	130.7	132.7	135.6
ITC	271.6	272.8	274.5	275.7	277.4
JSW STEEL	293.0	297.7	303.0	307.7	312.9
KOTAK BANK	1099.1	1191.8	1268.9	1361.6	1438.7
LT	1360.1	1380.1	1392.0	1412.0	1423.9
M&M	701.6	710.8	718.8	728.0	736.0
MARUTI	7141.0	7230.0	7290.0	7379.0	7438.9
NTPC	134.0	136.0	138.6	140.6	143.1
ONGC	136.2	137.8	139.6	141.2	143.0
POWERGRID	177.2	180.0	183.5	186.4	189.9
RELIANCE	1097.8	1115.9	1126.4	1144.5	1155.0
SBIN	269.7	272.6	275.0	277.8	280.2
SUNPHARMA	397.3	404.3	415.1	422.1	433.0
TATAMOTORS	159.1	160.7	162.5	164.1	165.9
TATA STEEL	497.4	503.4	509.1	515.1	520.8
TCS	1959.8	1977.5	1990.7	2008.4	2021.6
TECHM	675.7	685.0	694.5	703.8	713.3
TITAN	882.3	899.5	910.5	927.6	938.6
ULTRACEMCO	3845.6	3889.0	3923.5	3967.0	4001.5
UPL	729.3	743.5	753.7	767.9	778.0
VEDL	190.4	193.0	195.7	198.3	201.0
WIPRO	319.5	326.4	331.4	338.3	343.3
YES BANK	156.7	161.5	166.7	171.5	176.7
ZEEL	459.2	468.3	476.1	485.2	493.0

### TEAM

ANALYST	DESIGNATION	EMAIL	TELEPHONE
Aditya Agarwal	Head – Technical Research	<a href="mailto:aditya@way2wealth.com">aditya@way2wealth.com</a>	+91 22-61462955
Monil Shah, CMT	Sr. Technical Analyst – Equity & Forex	<a href="mailto:monilshah@way2wealth.com">monilshah@way2wealth.com</a>	+91 22-61462980
Harish Jujarey	Sr. Technical Analyst – Commodity	<a href="mailto:harishjujarey@way2wealth.com">harishjujarey@way2wealth.com</a>	+91 22-61462952
Mohit Agarwal	Technical Analyst – Forex & Commodity	<a href="mailto:mohitk@way2wealth.com">mohitk@way2wealth.com</a>	+91 22-61462954

### Disclaimer

**Analyst Certification:** I, Monil Shah, CMT the research analyst and author of this report, hereby certify that the views expressed in this research report accurately reflect our personal views about the subject securities, issuers, products, sectors or industries. It is also certified that no part of the compensation of the analyst(s) was, is, or will be directly or indirectly related to the inclusion of specific recommendations or views in this research. The analyst(s), principally responsible for the preparation of this research report, receives compensation based on overall revenues of the company (Way2Wealth Brokers Private Limited, hereinafter referred to as Way2Wealth) and has taken reasonable care to achieve and maintain independence and objectivity in making any recommendations.

It is confirmed that Monil Shah, CMT the author of this report has not received any compensation from the companies mentioned in the report in the preceding 12 months. Our research professionals are paid in part based on the profitability of Way2Wealth, which include earnings from other business. Neither Way2Wealth nor its directors, employees, agents or representatives shall be liable for any damages whether direct or indirect, incidental, special or consequential including lost revenue or lost profits that may arise from or in connection with the use of the information contained in this report.

This report is for the personal information of the authorized recipient and does not construe to be any investment, legal or taxation advice to you. Way2Wealth is not soliciting any action based upon it. Nothing in this research shall be construed as a solicitation to buy or sell any security or product, or to engage in or refrain from engaging in any such transaction. The contents of this material are general and are neither comprehensive nor appropriate for every individual and are solely for the informational purposes of the readers. This material does not take into account the specific objectives, financial situation or needs of an individual/s or a Corporate/s or any entity/s.

This research has been prepared for the general use of the clients of the Way2Wealth and must not be copied, either in whole or in part, or distributed or redistributed to any other person in any form. If you are not the intended recipient you must not use or disclose the information in this research in any way. Though disseminated to all the customers simultaneously, not all customers may receive this report at the same time. Way2Wealth will not treat recipients as customers by virtue of their receiving this report. The distribution of this document in other jurisdictions may be restricted by the law applicable in the relevant jurisdictions and persons into whose possession this document comes should inform themselves about, and observe any such restrictions.

The report is based upon information obtained from sources believed to be reliable, but we do not make any representation or warranty that it is accurate, complete or up to date and it should not be relied upon as such. Way2Wealth or any of its affiliates or employees makes no warranties, either express or implied of any kind regarding any matter pertaining to this report, including, but not limited to warranties of suitability, fitness for a particular purpose, accuracy, timeliness, completeness or non-infringement. We accept no obligation to correct or update the information or opinions in it. Way2Wealth or any of its affiliates or employees shall not be in any way responsible for any loss or damage that may arise to any person from any inadvertent error in the information contained in this report. The recipients of this report should rely on their own investigations. In no event shall Way2Wealth be liable for any damages of any kind, including, but not limited to, indirect, special, incidental, consequential, punitive, lost profits, or lost opportunity, whether or not Way2Wealth has advised of the possibility of such damages.

This material contains statements that are forward-looking; such statements are based upon the current beliefs and expectations and are subject to significant risks and uncertainties. Actual results may differ from those set forth in the forward-looking statements. These uncertainties include but are not limited to: the risk of adverse movements or volatility in the securities markets or in interest or foreign exchange rates or indices; adverse impact from an economic slowdown; downturn in domestic or foreign securities and trading conditions or markets; increased competition; unfavourable political and diplomatic developments; change in the governmental or regulatory policies; failure of a corporate event and such others. This is not an offer to buy or sell or a solicitation of an offer to buy or sell any security or instrument or to participate in any particular trading strategy. No part of this material may be copied or duplicated in any form by any means or redistributed without the written consent of Way2Wealth. In no event shall any reader publish, retransmit, redistribute or otherwise reproduce any information provided by Way2Wealth in any format to anyone. Way2Wealth and its affiliates, officers, directors and employees including persons involved in the preparation or issuance of this report may from time to time have interest in securities / positions, financial or otherwise in the securities related to the information contained in this report.