

### MCX GOLDMINI MAY



- Gold prices finally showed relief sign in last 2 weeks in which prices have rose from the lows near 44000 level to 46674 level till now. In last prices have gained about 2.78% and formed bullish candlestick pattern. Such relief rally we are witnessing after the correction of 12 weeks and thus lows near 44000 looks important now and trend has shifted to buy on dips mode.
- The above daily chart shows that prices formed crucial base near 44000 levels and started to move higher which has broken the downward moving channel for the first time. Moreover it has successfully crossed above 20 days and 50 days EMA. RSI reached towards 60-65 zone after many months. All these together indicates trend is on upside now. On downside 45330-45000 will act as crucial support zone.
- In short, Goldmini May trend looks bullish from hereon and use buy on dips approach. On upside it is likely to move towards 48000 level where 50% retracement of the prior fall is placed.

### Today's Actionable

Commodity	Expiry	Action	Entry	Target	Stop loss
Gold	June	Buy	Around 46500	46900	46350
Natural Gas	Apr	Buy	Around 188	198	182
Soya Oil	May	Sell	Around 1300	1275	1315

### MCX

Commodity	Expiry	Close (Rs)	Change	% Change
GOLD	04 JUN 2021	46593	-245	-0.52
SILVER	05 MAY 2021	66983	-518	-0.77
CRUDEOIL	19 APR 2021	4434	-4	-0.09
NATURALGAS	27 APR 2021	189.1	2.5	1.34
COPPER	30 APR 2021	689.85	-5.75	-0.83
NICKEL	30 APR 2021	1252.7	-18.2	-1.43
ALUMINIUM	30 APR 2021	182.25	-3.45	-1.86
LEAD	30 APR 2021	164.45	-2.25	-1.35
ZINC	30 APR 2021	227.7	-2.4	-1.04
COTTON	30 APR 2021	21850	-90	-0.41

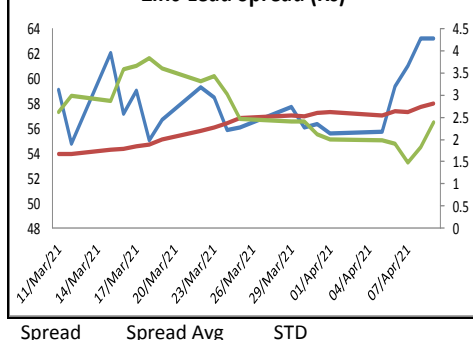
### NCDEX

Commodity	Expiry	Close (Rs)	Change	% Change
GUARGUM5	20 APR 2021	6045	10	0.17
GUARSEED10	20 APR 2021	3883	20	0.52
CHANA	20 APR 2021	5408	64	1.2
CASTOR	20 APR 2021	4772	-18	-0.38
RMSEED	20 APR 2021	6176	71	1.16
SYBEANIDR	20 APR 2021	6580	168	2.62
SYOREF	20 APR 2021	1320.9	5.6	0.43
COCUDAKL	20 APR 2021	2687	49	1.86
JEERAUNJHA	20 APR 2021	14175	-100	-0.7
TMCFCGRNZM	20 APR 2021	7944	-76	-0.95

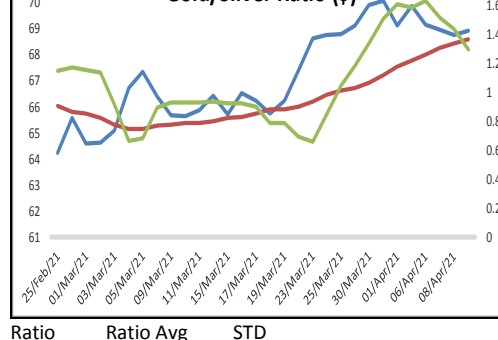
### GLOBAL

Exchange	Commodity	Close (\$)	Change	% Change
Comex	Gold	1,744.60	-13.60	-0.77%
Comex	Silver	25.32	-0.27	-1.06%
Nymex	Crude Oil WTI	59.34	-0.26	-0.44%
ICE	Brent Oil	63.01	-0.19	-0.30%
Nymex	Natural Gas	2.52	0.00	-0.04%
LME	Copper	8,929.50	-78.00	-0.87%
LME	Nickel	16,640.00	-180.00	-1.07%
LME	Aluminium	2,269.50	-16.50	-0.72%
LME	Lead	1,974.00	-13.50	-0.68%
LME	Zinc	2,838.00	-24.00	-0.84%

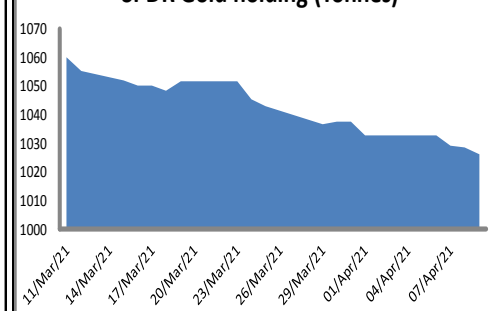
### Zinc-Lead Spread (Rs)



### Gold/Silver Ratio (\$)



### SPDR Gold holding (Tonnes)



ECONOMIC DATA & EVENTS						
TIME(IST)	COUNTRY	DATA & EVENTS	ACTUAL	FORECAST	PREVIOUS	
2:30 PM	EU	Retail Sales (MoM) (Feb)	-	1.50%	-5.90%	
2:30 PM	EU	Retail Sales (YoY) (Feb)	-	-5.40%	-6.40%	
5:30 PM	IN	CPI (YoY) (Mar)	-	5.40%	5.03%	
5:30 PM	IN	Cumulative Industrial Production (Feb)	-	-	-12.20%	
5:30 PM	IN	Industrial Production (YoY) (Feb)	-	-3.00%	-1.60%	
5:30 PM	IN	Manufacturing Output (MoM) (Feb)	-	-	-2.00%	
-	-	-	-	-	-	
-	-	-	-	-	-	
-	-	-	-	-	-	
DAILY PIVOT LEVELS						
Symbol	Expiry	LTP	S2	S1	Pivot	R1 R2
GOLD	INTL. SPOT (\$)	1744	1717	1731	1744	1758 1771
GOLD	04 JUN 2021	46593	46025	46309	46598	46882 47171
SILVER	INTL. SPOT (\$)	25.27	24.71	24.99	25.24	25.52 25.78
SILVER	05 MAY 2021	66983	65852	66417	66937	67502 68022
CRUDEOIL	19 APR 2021	4434	4387	4411	4443	4467 4499
NATURALGAS	27 APR 2021	189.1	185.8	187.4	189.2	190.8 192.6
COPPER	30 APR 2021	689.9	684.3	687.1	691.2	694.0 698.1
NICKEL	30 APR 2021	1252.7	1232.6	1242.7	1257.3	1267.4 1282.0
ALUMINIUM	30 APR 2021	182.3	179.4	180.8	183.1	184.6 186.9
LEAD	30 APR 2021	164.5	160.4	162.4	164.5	166.5 168.6
ZINC	30 APR 2021	227.7	225.5	226.6	228.1	229.2 230.7
COTTON	30 APR 2021	21850	21683	21767	21903	21987 22123
MENTHAOIL	30 APR 2021	956.0	953.4	954.7	956.3	957.6 959.2
CPO	30 APR 2021	1137.2	1079.5	1108.3	1130.2	1159.0 1180.9
CPO	31 MAY 2021	1100.4	1044.5	1072.4	1094.0	1121.9 1143.5
GUARGUM5	20 APR 2021	6045	5985	6015	6060	6090 6135
GUARGUM5	20 MAY 2021	6161	6090	6126	6175	6211 6260
GUARSEED10	20 APR 2021	3883	3835	3859	3879	3903 3923
GUARSEED10	20 MAY 2021	3958	3905	3931	3959	3985 4013
CHANA	20 APR 2021	5408	5321	5365	5407	5451 5493
CHANA	20 MAY 2021	5471	5346	5409	5464	5527 5582
CASTOR	20 APR 2021	4772	4689	4731	4783	4825 4877
CASTOR	20 MAY 2021	4860	4789	4825	4881	4917 4973
RMSEED	20 APR 2021	6176	6024	6100	6186	6262 6348
RMSEED	20 MAY 2021	6205	6056	6130	6221	6295 6386
SYBEANIDR	20 APR 2021	6580	6321	6450	6537	6666 6753
SYBEANIDR	20 MAY 2021	6458	6295	6377	6437	6519 6579
SYOREF	20 APR 2021	1320.9	1283.6	1302.3	1316.6	1335.3 1349.6
SYOREF	20 MAY 2021	1300.3	1258.7	1279.5	1298.0	1318.8 1337.3
COCUDAKL	20 APR 2021	2687	2548	2617	2663	2732 2778
COCUDAKL	20 MAY 2021	2711	2640	2675	2703	2738 2766
JEERAUNJHA	20 APR 2021	14175	13992	14083	14237	14328 14482
JEERAUNJHA	20 MAY 2021	14345	14125	14235	14400	14510 14675
TMCFGRNZM	20 APR 2021	7944	7767	7855	7979	8067 8191
TMCFGRNZM	20 MAY 2021	8234	8045	8139	8295	8389 8545

### TEAM

ANALYST	DESIGNATION	EMAIL	TELEPHONE
Monil Shah, CMT	AVP – Technical Analyst – Equity & Forex	<a href="mailto:monilshah@way2wealth.com">monilshah@way2wealth.com</a>	+9122-61462980
Rakesh Gandhi	Technical Analyst – Forex & Commodity	<a href="mailto:rakeshgandhi@way2wealth.com">rakeshgandhi@way2wealth.com</a>	+9122-61462982

### Disclaimer

**Analyst Certification:** I, Rakesh Gandhi, the research analyst and author of this report, hereby certify that the views expressed in this research report accurately reflect our personal views about the subject securities, issuers, products, sectors or industries. It is also certified that no part of the compensation of the analyst(s) was, is, or will be directly or indirectly related to the inclusion of specific recommendations or views in this research. The analyst(s), principally responsible for the preparation of this research report, receives compensation based on overall revenues of the company (Way2Wealth Brokers Private Limited, hereinafter referred to as Way2Wealth) and has taken reasonable care to achieve and maintain independence and objectivity in making any recommendations.

It is confirmed that Rakesh Gandhi, the author of this report has not received any compensation from the companies mentioned in the report in the preceding 12 months. Our research professionals are paid in part based on the profitability of Way2Wealth, which include earnings from other business. Neither Way2Wealth nor its directors, employees, agents or representatives shall be liable for any damages whether direct or indirect, incidental, special or consequential including lost revenue or lost profits that may arise from or in connection with the use of the information contained in this report.

This report is for the personal information of the authorized recipient and does not construe to be any investment, legal or taxation advice to you. Way2Wealth is not soliciting any action based upon it. Nothing in this research shall be construed as a solicitation to buy or sell any security or product, or to engage in or refrain from engaging in any such transaction. The contents of this material are general and are neither comprehensive nor appropriate for every individual and are solely for the informational purposes of the readers. This material does not take into account the specific objectives, financial situation or needs of an individual/s or a Corporate/s or any entity/s.

This research has been prepared for the general use of the clients of the Way2Wealth and must not be copied, either in whole or in part, or distributed or redistributed to any other person in any form. If you are not the intended recipient you must not use or disclose the information in this research in any way. Though disseminated to all the customers simultaneously, not all customers may receive this report at the same time. Way2Wealth will not treat recipients as customers by virtue of their receiving this report. The distribution of this document in other jurisdictions may be restricted by the law applicable in the relevant jurisdictions and persons into whose possession this document comes should inform themselves about, and observe any such restrictions.

The report is based upon information obtained from sources believed to be reliable, but we do not make any representation or warranty that it is accurate, complete or up to date and it should not be relied upon as such. Way2Wealth or any of its affiliates or employees makes no warranties, either express or implied of any kind regarding any matter pertaining to this report, including, but not limited to warranties of suitability, fitness for a particular purpose, accuracy, timeliness, completeness or non-infringement. We accept no obligation to correct or update the information or opinions in it. Way2Wealth or any of its affiliates or employees shall not be in any way responsible for any loss or damage that may arise to any person from any inadvertent error in the information contained in this report. The recipients of this report should rely on their own investigations. In no event shall Way2Wealth be liable for any damages of any kind, including, but not limited to, indirect, special, incidental, consequential, punitive, lost profits, or lost opportunity, whether or not Way2Wealth has advised of the possibility of such damages.

This material contains statements that are forward-looking; such statements are based upon the current beliefs and expectations and are subject to significant risks and uncertainties. Actual results may differ from those set forth in the forward-looking statements. These uncertainties include but are not limited to: the risk of adverse movements or volatility in the securities markets or in interest or foreign exchange rates or indices; adverse impact from an economic slowdown; downturn in domestic or foreign securities and trading conditions or markets; increased competition; unfavourable political and diplomatic developments; change in the governmental or regulatory policies; failure of a corporate event and such others. This is not an offer to buy or sell or a solicitation of an offer to buy or sell any security or instrument or to participate in any particular trading strategy. No part of this material may be copied or duplicated in any form by any means or redistributed without the written consent of Way2Wealth. In no event shall any reader publish, retransmit, redistribute or otherwise reproduce any information provided by Way2Wealth in any format to anyone. Way2Wealth and its affiliates, officers, directors and employees including persons involved in the preparation or issuance of this report may from time to time have interest in securities / positions, financial or otherwise in the securities related to the information contained in this report.