

MCX LEAD DEC



- Lead prices opened slightly higher with gap in the last session and prices rose further for most of the session till high of 154.10.
- Prices have broken out from its short term declining trend line resistance in the previous session.
- MACD (12,26,9) has also given a positive crossover on the daily chart.
- Therefore, prices are expected to recover further from these levels towards immediate resistance placed around 38.2% Fibonacci retracement of its fall from high of 160.55 till low of 151.60, which is placed at 155 level.
- On the lower side, immediate supports are placed around 153.50 and 152.50 levels. Buying on minor pullbacks is recommended in Lead for the day.

Today's Actionable

Commodity	Expiry	Action	Entry	Target	Stop loss
Lead	Dec	Buy	Around 153.50	155	152.50
Nickel	Dec	Buy	Around 1004	1025	990
Chana	Jan	Sell	Around 4350	4250	4420

MCX

Commodity	Expiry	Close (Rs)	Change	% Change
GOLD	05 FEB 2020	37699	128	0.34
SILVER	05 MAR 2020	43825	318	0.73
COPPER	31 DEC 2019	442.05	2.9	0.66
CRUDEOIL	18 DEC 2019	4156	-39	-0.93
ZINC	31 DEC 2019	181.25	-0.35	-0.19
LEAD	31 DEC 2019	153.85	0.6	0.39
ALUMINIUM	31 DEC 2019	132.65	0.35	0.26
NICKEL	31 DEC 2019	1014.3	22.8	2.3
NATURALGAS	26 DEC 2019	160.5	-0.3	-0.19
MENTHAOIL	31 DEC 2019	1295.8	-10.3	-0.79

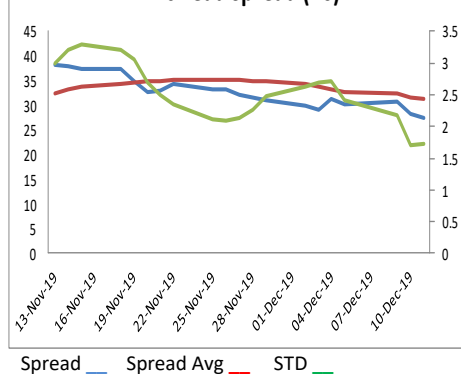
NCDEX

Commodity	Expiry	Close (Rs)	Change	% Change
GUARGUM5	20 JAN 2020	7265	133	1.86
GUARSEED10	20 JAN 2020	4000	50	1.27
CHANA	20 JAN 2020	4338	-62	-1.41
CASTOR	20 JAN 2020	4226	40	0.96
RMSEED	20 JAN 2020	4418	-3	-0.07
SYBEANIDR	20 JAN 2020	4198	10	0.24
SYOREF	20 JAN 2020	854	-2	-0.23
JEERAUNJHA	20 JAN 2020	15810	-110	-0.69
TMCFGRNZM	20 MAR 2020	6178	236	3.97
COCUDAKL	20 JAN 2020	2001	-25	-1.23

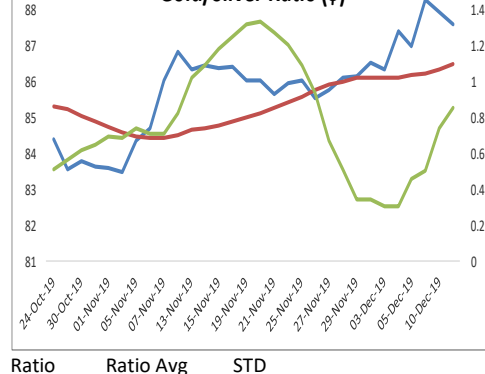
GLOBAL

Exchange	Commodity	Close (\$)	Change	% Change
Comex	Gold	1,475.05	6.95	0.47%
Comex	Silver	16.848	0.146	0.87%
Nymex	Crude Oil WTI	58.64	-0.6	-1.01%
ICE	Brent Oil	63.55	-0.79	-1.23%
Nymex	Natural Gas	2.264	0	0.00%
LME	Copper	6,142.00	50.5	0.83%
LME	Lead	1,934.25	19.5	1.02%
LME	Zinc	2,223.75	-0.25	-0.01%
LME	Aluminium	1,761.25	7.75	0.44%
LME	Nickel	13,852.50	432.5	3.22%

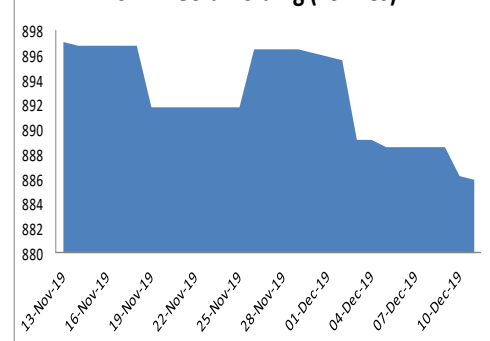
Zinc-Lead Spread (Rs)



Gold/Silver Ratio (\$)



SPDR Gold holding (Tonnes)



ECONOMIC DATA & EVENTS

TIME(IST)	COUNTRY	DATA & EVENTS	ACTUAL	FORECAST	PREVIOUS
6:15 PM	EU	Deposit Facility Rate (Dec)	-	-0.50%	-0.50%
6:15 PM	EU	ECB Marginal Lending Facility	-	0.25%	0.25%
6:15 PM	EU	ECB Monetary Policy Statement	-	-	-
6:15 PM	EU	ECB Interest Rate Decision (Dec)	-	0.00%	0.00%
7:00 PM	US	Core PPI (MoM) (Nov)	-	0.20%	0.30%
7:00 PM	US	Initial Jobless Claims	-	213K	203K
7:00 PM	US	PPI (MoM) (Nov)	-	0.20%	0.40%
7:00 PM	EU	ECB Press Conference	-	-	-
-	-	-	-	-	-

DAILY PIVOT LEVELS

Symbol	Expiry	LTP	S2	S1	Pivot	R1	R2
GOLD	05 FEB 2020	37699	37434	37567	37652	37785	37870
SILVER	05 MAR 2020	43825	43174	43499	43732	44057	44290
COPPER	31 DEC 2019	442.1	436.9	439.5	441.1	443.7	445.3
CRUDEOIL	18 DEC 2019	4156	4077	4117	4154	4194	4231
ZINC	31 DEC 2019	181.3	180.0	180.6	181.7	182.4	183.5
LEAD	31 DEC 2019	153.9	153.1	153.5	153.8	154.2	154.5
ALUMINIUM	31 DEC 2019	132.7	131.9	132.3	132.5	132.9	133.2
NICKEL	31 DEC 2019	1014.3	982.2	998.3	1007.2	1023.3	1032.2
NATURALGAS	26 DEC 2019	160.5	157.8	159.1	161.3	162.6	164.8
MENTHAOIL	31 DEC 2019	1295.8	1283.5	1289.7	1298.7	1304.9	1313.9
GUARGUM5	20 JAN 2020	7265	7006	7135	7223	7352	7440
GUARGUM5	20 FEB 2020	7375	7186	7280	7343	7437	7500
GUARSEED10	20 JAN 2020	4000	3888	3944	3988	4044	4088
GUARSEED10	20 FEB 2020	4046	3949	3997	4035	4083	4121
CHANA	20 JAN 2020	4338	4271	4304	4362	4395	4453
CHANA	20 MAR 2020	4294	4255	4274	4305	4324	4355
CASTOR	20 JAN 2020	4226	4133	4179	4209	4255	4285
CASTOR	20 FEB 2020	4188	4137	4163	4181	4207	4225
RMSEED	20 JAN 2020	4418	4397	4407	4420	4430	4443
RMSEED	20 FEB 2020	4436	1479	2957	1479	2957	1479
SYBEANIDR	20 JAN 2020	4198	4131	4165	4195	4229	4259
SYBEANIDR	20 FEB 2020	4226	4169	4197	4227	4255	4285
SYOREF	20 JAN 2020	854.0	846.1	850.1	854.9	858.9	863.7
SYOREF	20 FEB 2020	852.4	843.2	847.8	852.4	857.0	861.6
COCUDAKL	20 JAN 2020	2001	1971	1986	2012	2027	2053
COCUDAKL	20 FEB 2020	2027	1997	2012	2036	2051	2075
JEERAUNJHA	20 JAN 2020	15810	15697	15753	15827	15883	15957
JEERAUNJHA	20 MAR 2020	15765	15525	15645	15760	15880	15995
TMCFCGRNZM	20 MAR 2020	6178	5842	6010	6094	6262	6346
TMCFCGRNZM	20 APR 2020	6184	5952	6068	6126	6242	6300
DHANIYA	20 APR 2020	7112	7045	7078	7109	7142	7173
DHANIYA	20 JAN 2020	6722	6638	6680	6720	6762	6802
COTTON	31 JAN 2020	19190	19097	19143	19197	19243	19297
COTTON	31 DEC 2019	19020	18947	18983	19037	19073	19127

TEAM

ANALYST	DESIGNATION	EMAIL	TELEPHONE
Monil Shah, CMT	Sr. Technical Analyst – Equity & Forex	monilshah@way2wealth.com	+9122-61462980
Harish Jujarey	Sr. Technical Analyst – Equity, Forex & Commodity	harishjujarey@way2wealth.com	+9122-61462952
Mohit Agarwal	Technical Analyst – Forex & Commodity	mohitk@way2wealth.com	+9122-61462954

Disclaimer

Analyst Certification: I, Mohit Agarwal, the research analyst and author of this report, hereby certify that the views expressed in this research report accurately reflect our personal views about the subject securities, issuers, products, sectors or industries. It is also certified that no part of the compensation of the analyst(s) was, is, or will be directly or indirectly related to the inclusion of specific recommendations or views in this research. The analyst(s), principally responsible for the preparation of this research report, receives compensation based on overall revenues of the company (Way2Wealth Brokers Private Limited, hereinafter referred to as Way2Wealth) and has taken reasonable care to achieve and maintain independence and objectivity in making any recommendations.

It is confirmed that Mohit Agarwal, the author of this report has not received any compensation from the companies mentioned in the report in the preceding 12 months. Our research professionals are paid in part based on the profitability of Way2Wealth, which include earnings from other business. Neither Way2Wealth nor its directors, employees, agents or representatives shall be liable for any damages whether direct or indirect, incidental, special or consequential including lost revenue or lost profits that may arise from or in connection with the use of the information contained in this report.

This report is for the personal information of the authorized recipient and does not construe to be any investment, legal or taxation advice to you. Way2Wealth is not soliciting any action based upon it. Nothing in this research shall be construed as a solicitation to buy or sell any security or product, or to engage in or refrain from engaging in any such transaction. The contents of this material are general and are neither comprehensive nor appropriate for every individual and are solely for the informational purposes of the readers. This material does not take into account the specific objectives, financial situation or needs of an individual/s or a Corporate/s or any entity/s.

This research has been prepared for the general use of the clients of the Way2Wealth and must not be copied, either in whole or in part, or distributed or redistributed to any other person in any form. If you are not the intended recipient you must not use or disclose the information in this research in any way. Though disseminated to all the customers simultaneously, not all customers may receive this report at the same time. Way2Wealth will not treat recipients as customers by virtue of their receiving this report. The distribution of this document in other jurisdictions may be restricted by the law applicable in the relevant jurisdictions and persons into whose possession this document comes should inform themselves about, and observe any such restrictions.

The report is based upon information obtained from sources believed to be reliable, but we do not make any representation or warranty that it is accurate, complete or up to date and it should not be relied upon as such. Way2Wealth or any of its affiliates or employees makes no warranties, either express or implied of any kind regarding any matter pertaining to this report, including, but not limited to warranties of suitability, fitness for a particular purpose, accuracy, timeliness, completeness or non-infringement. We accept no obligation to correct or update the information or opinions in it. Way2Wealth or any of its affiliates or employees shall not be in any way responsible for any loss or damage that may arise to any person from any inadvertent error in the information contained in this report. The recipients of this report should rely on their own investigations. In no event shall Way2Wealth be liable for any damages of any kind, including, but not limited to, indirect, special, incidental, consequential, punitive, lost profits, or lost opportunity, whether or not Way2Wealth has advised of the possibility of such damages.

This material contains statements that are forward-looking; such statements are based upon the current beliefs and expectations and are subject to significant risks and uncertainties. Actual results may differ from those set forth in the forward-looking statements. These uncertainties include but are not limited to: the risk of adverse movements or volatility in the securities markets or in interest or foreign exchange rates or indices; adverse impact from an economic slowdown; downturn in domestic or foreign securities and trading conditions or markets; increased competition; unfavourable political and diplomatic developments; change in the governmental or regulatory policies; failure of a corporate event and such others. This is not an offer to buy or sell or a solicitation of an offer to buy or sell any security or instrument or to participate in any particular trading strategy. No part of this material may be copied or duplicated in any form by any means or redistributed without the written consent of Way2Wealth. In no event shall any reader publish, retransmit, redistribute or otherwise reproduce any information provided by Way2Wealth in any format to anyone. Way2Wealth and its affiliates, officers, directors and employees including persons involved in the preparation or issuance of this report may from time to time have interest in securities / positions, financial or otherwise in the securities related to the information contained in this report.