

MCX NICKEL DEC



- Nickel prices opened slightly higher in the last session and prices corrected gradually for first half of the session till low of 1005. Later, prices recovered strongly for the remaining session till high of 1024.90.
- Prices have bounced after taking strong support at its medium term rising trend line coinciding with its previous swing high of 969.
- MACD (12,26,9) has also given a positive crossover on the daily chart.
- Therefore, prices are expected to recover further from these levels towards immediate resistance placed around 1060 level.
- On the lower side, immediate supports are placed around 1005 and 975 levels. Buying on minor pullbacks is recommended in Nickel for the day.

Today's Actionable

Commodity	Expiry	Action	Entry	Target	Stop loss
Nickel	Dec	Buy	Around 1005	1060	975
Aluminium	Dec	Buy	Around 133	134.70	131.90
Soy oil	Jan	Buy	Around 861	876	851

MCX

Commodity	Expiry	Close (Rs)	Change	% Change
GOLD	05 FEB 2020	37544	-155	-0.41
SILVER	05 MAR 2020	43926	101	0.23
COPPER	31 DEC 2019	441.95	-0.1	-0.02
CRUDEOIL	18 DEC 2019	4200	44	1.06
ZINC	31 DEC 2019	182.7	1.45	0.8
LEAD	31 DEC 2019	153.2	-0.65	-0.42
ALUMINIUM	31 DEC 2019	133.5	0.85	0.64
NICKEL	31 DEC 2019	1020.7	6.4	0.63
NATURALGAS	26 DEC 2019	163.3	2.8	1.74
MENTHAOIL	31 DEC 2019	1301.4	5.6	0.43

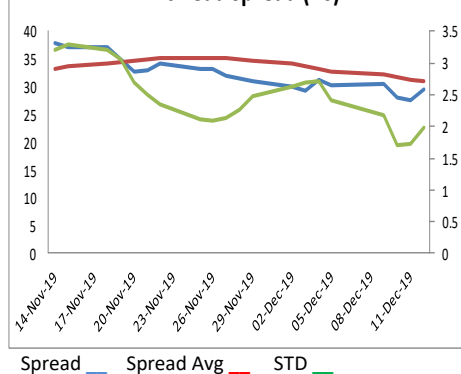
NCDEX

Commodity	Expiry	Close (Rs)	Change	% Change
GUARGUM5	20 JAN 2020	7250	-15	-0.21
GUARSEED10	20 JAN 2020	4002	2	0.05
CHANA	20 JAN 2020	4363	25	0.58
CASTOR	20 JAN 2020	4282	56	1.33
RMSEED	20 JAN 2020	4468	50	1.13
SYBEANIDR	20 JAN 2020	4266	68	1.62
SYOREF	20 JAN 2020	864.4	10.4	1.22
JEERAUNJHA	20 JAN 2020	15820	10	0.06
TMCFGRNZM	20 MAR 2020	6278	100	1.62
COCUDAKL	20 JAN 2020	2041	40	2

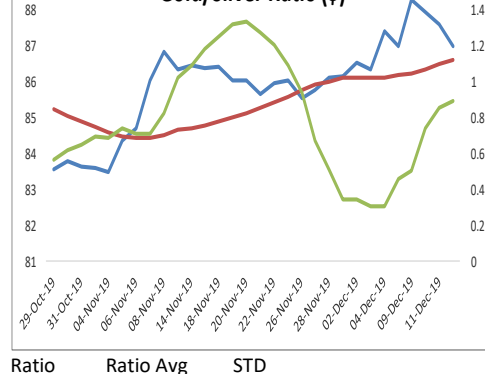
GLOBAL

Exchange	Commodity	Close (\$)	Change	% Change
Comex	Gold	1,472.75	-2.25	-0.15%
Comex	Silver	16.945	0.096	0.57%
Nymex	Crude Oil WTI	59.48	0.72	1.23%
ICE	Brent Oil	64.55	0.83	1.30%
Nymex	Natural Gas	2.312	0.069	3.08%
LME	Copper	6,160.25	16.25	0.26%
LME	Lead	1,927.25	-6.75	-0.35%
LME	Zinc	2,258.75	33.25	1.49%
LME	Aluminium	1,772.75	12.25	0.70%
LME	Nickel	14,017.50	170	1.23%

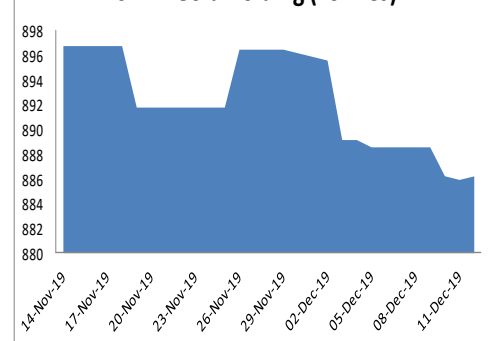
Zinc-Lead Spread (Rs)



Gold/Silver Ratio (\$)



SPDR Gold holding (Tonnes)



ECONOMIC DATA & EVENTS					
TIME(IST)	COUNTRY	DATA & EVENTS	ACTUAL	FORECAST	PREVIOUS
7:00 PM	US	Core Retail Sales (MoM) (Nov)	-	0.4%	0.2%
7:00 PM	US	Export Price Index (MoM) (Nov)	-	0.1%	-0.1%
7:00 PM	US	Import Price Index (MoM) (Nov)	-	0.2%	-0.5%
7:00 PM	US	Retail Sales (MoM) (Nov)	-	0.5%	0.3%
8:30 PM	US	Business Inventories (MoM) (Oct)	-	0.2%	0.0%
-	-	-	-	-	-
-	-	-	-	-	-
-	-	-	-	-	-
-	-	-	-	-	-

DAILY PIVOT LEVELS							
Symbol	Expiry	LTP	S2	S1	Pivot	R1	R2
GOLD	05 FEB 2020	37544	37096	37320	37694	37918	38292
SILVER	05 MAR 2020	43926	43159	43543	44086	44470	45013
COPPER	31 DEC 2019	442.0	437.4	439.7	441.3	443.6	445.3
CRUDEOIL	18 DEC 2019	4200	4121	4160	4192	4231	4263
ZINC	31 DEC 2019	182.7	180.6	181.7	182.7	183.7	184.7
LEAD	31 DEC 2019	153.2	152.3	152.8	153.5	153.9	154.6
ALUMINIUM	31 DEC 2019	133.5	131.9	132.7	133.2	134.0	134.5
NICKEL	31 DEC 2019	1020.7	997.0	1008.8	1016.9	1028.7	1036.8
NATURALGAS	26 DEC 2019	163.3	157.2	160.3	162.2	165.3	167.2
MENTHAOIL	31 DEC 2019	1301.4	1286.9	1294.1	1300.6	1307.8	1314.3
GUARGUM5	20 JAN 2020	7250	7175	7212	7261	7298	7347
GUARGUM5	20 FEB 2020	7355	7288	7322	7363	7397	7438
GUARSEED10	20 JAN 2020	4002	3962	3982	4004	4024	4046
GUARSEED10	20 FEB 2020	4046	4010	4028	4046	4064	4082
CHANA	20 JAN 2020	4363	4314	4339	4364	4389	4414
CHANA	20 MAR 2020	4321	4298	4310	4317	4329	4336
CASTOR	20 JAN 2020	4282	4209	4245	4267	4303	4325
CASTOR	20 FEB 2020	4262	4161	4211	4261	4311	4361
RMSEED	20 JAN 2020	4468	4397	4432	4453	4488	4509
RMSEED	20 FEB 2020	4400	4359	4379	4409	4429	4459
SYBEANIDR	20 JAN 2020	4266	4153	4209	4243	4299	4333
SYBEANIDR	20 FEB 2020	4292	4188	4240	4270	4322	4352
SYOREF	20 JAN 2020	864.4	847.9	856.1	860.9	869.1	873.9
SYOREF	20 FEB 2020	860.6	845.5	853.1	857.5	865.1	869.5
COCUDAKL	20 JAN 2020	2041	1964	2002	2025	2063	2086
COCUDAKL	20 FEB 2020	2061	1993	2027	2046	2080	2099
JEERAUNJHA	20 JAN 2020	15820	15713	15767	15833	15887	15953
JEERAUNJHA	20 MAR 2020	15840	15793	15817	15833	15857	15873
TMCFCGRNZM	20 MAR 2020	6278	6147	6213	6275	6341	6403
TMCFCGRNZM	20 APR 2020	6206	6099	6153	6235	6289	6371
DHANIYA	20 APR 2020	6912	6719	6816	6995	7092	7271
DHANIYA	20 JAN 2020	6607	6382	6494	6683	6795	6984
COTTON	31 JAN 2020	19380	18960	19170	19310	19520	19660
COTTON	31 DEC 2019	19230	18810	19020	19160	19370	19510

TEAM

ANALYST	DESIGNATION	EMAIL	TELEPHONE
Monil Shah, CMT	Sr. Technical Analyst – Equity & Forex	monilshah@way2wealth.com	+9122-61462980
Harish Jujarey	Sr. Technical Analyst – Equity, Forex & Commodity	harishjujarey@way2wealth.com	+9122-61462952
Mohit Agarwal	Technical Analyst – Forex & Commodity	mohitk@way2wealth.com	+9122-61462954

Disclaimer

Analyst Certification: I, Mohit Agarwal, the research analyst and author of this report, hereby certify that the views expressed in this research report accurately reflect our personal views about the subject securities, issuers, products, sectors or industries. It is also certified that no part of the compensation of the analyst(s) was, is, or will be directly or indirectly related to the inclusion of specific recommendations or views in this research. The analyst(s), principally responsible for the preparation of this research report, receives compensation based on overall revenues of the company (Way2Wealth Brokers Private Limited, hereinafter referred to as Way2Wealth) and has taken reasonable care to achieve and maintain independence and objectivity in making any recommendations.

It is confirmed that Mohit Agarwal, the author of this report has not received any compensation from the companies mentioned in the report in the preceding 12 months. Our research professionals are paid in part based on the profitability of Way2Wealth, which include earnings from other business. Neither Way2Wealth nor its directors, employees, agents or representatives shall be liable for any damages whether direct or indirect, incidental, special or consequential including lost revenue or lost profits that may arise from or in connection with the use of the information contained in this report.

This report is for the personal information of the authorized recipient and does not construe to be any investment, legal or taxation advice to you. Way2Wealth is not soliciting any action based upon it. Nothing in this research shall be construed as a solicitation to buy or sell any security or product, or to engage in or refrain from engaging in any such transaction. The contents of this material are general and are neither comprehensive nor appropriate for every individual and are solely for the informational purposes of the readers. This material does not take into account the specific objectives, financial situation or needs of an individual/s or a Corporate/s or any entity/s.

This research has been prepared for the general use of the clients of the Way2Wealth and must not be copied, either in whole or in part, or distributed or redistributed to any other person in any form. If you are not the intended recipient you must not use or disclose the information in this research in any way. Though disseminated to all the customers simultaneously, not all customers may receive this report at the same time. Way2Wealth will not treat recipients as customers by virtue of their receiving this report. The distribution of this document in other jurisdictions may be restricted by the law applicable in the relevant jurisdictions and persons into whose possession this document comes should inform themselves about, and observe any such restrictions.

The report is based upon information obtained from sources believed to be reliable, but we do not make any representation or warranty that it is accurate, complete or up to date and it should not be relied upon as such. Way2Wealth or any of its affiliates or employees makes no warranties, either express or implied of any kind regarding any matter pertaining to this report, including, but not limited to warranties of suitability, fitness for a particular purpose, accuracy, timeliness, completeness or non-infringement. We accept no obligation to correct or update the information or opinions in it. Way2Wealth or any of its affiliates or employees shall not be in any way responsible for any loss or damage that may arise to any person from any inadvertent error in the information contained in this report. The recipients of this report should rely on their own investigations. In no event shall Way2Wealth be liable for any damages of any kind, including, but not limited to, indirect, special, incidental, consequential, punitive, lost profits, or lost opportunity, whether or not Way2Wealth has advised of the possibility of such damages.

This material contains statements that are forward-looking; such statements are based upon the current beliefs and expectations and are subject to significant risks and uncertainties. Actual results may differ from those set forth in the forward-looking statements. These uncertainties include but are not limited to: the risk of adverse movements or volatility in the securities markets or in interest or foreign exchange rates or indices; adverse impact from an economic slowdown; downturn in domestic or foreign securities and trading conditions or markets; increased competition; unfavourable political and diplomatic developments; change in the governmental or regulatory policies; failure of a corporate event and such others. This is not an offer to buy or sell or a solicitation of an offer to buy or sell any security or instrument or to participate in any particular trading strategy. No part of this material may be copied or duplicated in any form by any means or redistributed without the written consent of Way2Wealth. In no event shall any reader publish, retransmit, redistribute or otherwise reproduce any information provided by Way2Wealth in any format to anyone. Way2Wealth and its affiliates, officers, directors and employees including persons involved in the preparation or issuance of this report may from time to time have interest in securities / positions, financial or otherwise in the securities related to the information contained in this report.