

### MCX GOLD AUG



- Gold prices opened flat in the last session and prices rose strongly for most of the session till high of 32980.
- Prices have bounced after taking strong support around its previous swing high of 32538.
- Prices are expected to rise further from these levels towards immediate resistance placed around its recent swing high of 33040.
- On the lower side, immediate supports are placed around 32850 and 32720 levels.
- Buying around immediate support level is recommended in Gold for the day.

### Today's Actionable

Commodity	Expiry	Action	Entry	Target	Stop loss
Gold	Aug	Buy	Around 32850	33040	32720
Silver	Jul	Buy	Around 36960	37400	36660
Soybean	Jul	Buy	Around 3675	3765	3615

### MCX

Commodity	Expiry	Close (Rs)	Change	% Change
GOLD	05 AUG 2019	32959	214	0.65
SILVER	05 JUL 2019	37105	350	0.95
COPPER	28 JUN 2019	409.1	1.75	0.43
CRUDEOIL	19 JUN 2019	3643	47	1.31
ZINC	28 JUN 2019	203.8	-2.45	-1.19
LEAD	28 JUN 2019	154.4	-0.3	-0.19
ALUMINIUM	28 JUN 2019	143.55	0.15	0.1
NICKEL	28 JUN 2019	867.4	0.9	0.1
NATURALGAS	25 JUN 2019	163.2	-3.1	-1.86
MENTHAOIL	28 JUN 2019	1345.3	26	1.97

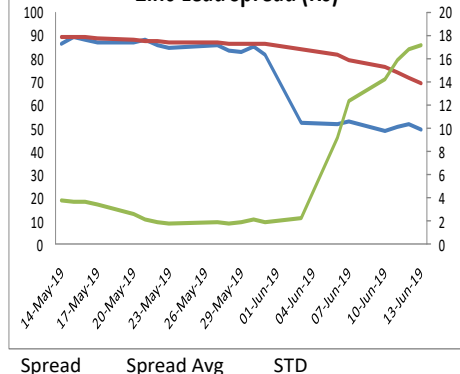
### NCDEX

Commodity	Expiry	Close (Rs)	Change	% Change
GUARGUM5	20 JUN 2019	8567	112	1.32
GUARSEED10	20 JUN 2019	4240	58	1.39
CHANA	20 JUN 2019	4424	17	0.39
CASTOR	20 JUN 2019	5450	32	0.59
RMSEED	20 JUN 2019	3930	18	0.46
SYBEANIDR	20 JUN 2019	3700	50	1.37
SYOREF	20 JUN 2019	755.25	4.7	0.63
JEERAUNJHA	20 JUN 2019	17530	-335	-1.88
TMCFGRNZM	20 JUN 2019	6730	-34	-0.5
COCUDAKL	20 JUN 2019	2809	79.5	2.91

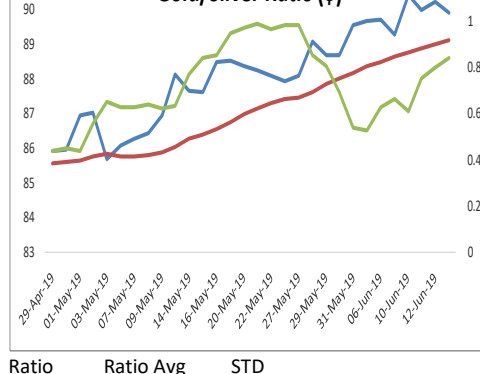
### GLOBAL

Exchange	Commodity	Close (\$)	Change	% Change
Comex	Gold	1345.35	8.55	0.64%
Comex	Silver	14.908	0.155	1.05%
Nymex	Crude Oil WTI	52.44	1.3	2.54%
ICE	Brent Oil	61.36	1.39	2.32%
Nymex	Natural Gas	2.34	-0.046	-1.93%
LME	Copper	5864.5	12	0.21%
LME	Lead	1891	-0.25	-0.01%
LME	Zinc	2475.75	-36.25	-1.44%
LME	Aluminium	1786.75	-1	-0.06%
LME	Nickel	11837.5	-10	-0.08%

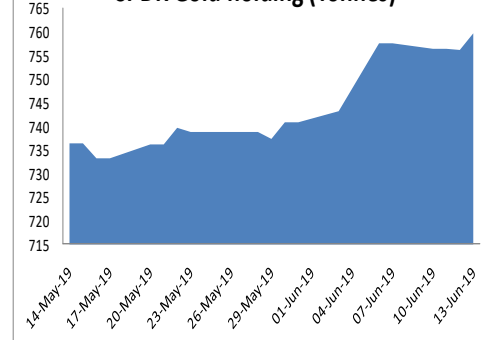
### Zinc-Lead Spread (Rs)



### Gold/Silver Ratio (\$)



### SPDR Gold holding (Tonnes)



### ECONOMIC DATA & EVENTS

TIME(IST)	COUNTRY	DATA & EVENTS	ACTUAL	FORECAST	PREVIOUS
7:30 AM	CN	Fixed Asset Investment (YoY) (May)	-	6.1%	6.1%
7:30 AM	CN	Industrial Production (YoY) (May)	-	5.4%	5.4%
Tentative	CN	New Loans	-	1,300.0B	1,020.0B
6:00 PM	US	Core Retail Sales (MoM) (May)	-	0.5%	0.1%
6:00 PM	US	Retail Sales (MoM) (May)	-	0.7%	-0.2%
6:45 PM	US	Industrial Production (MoM) (May)	-	0.2%	-0.5%
7:30 PM	US	Business Inventories (MoM) (Apr)	-	0.4%	0.0%
7:30 PM	US	Michigan Consumer Expectations (Jun)	-	92.0	93.5
7:30 PM	US	Michigan Consumer Sentiment (Jun)	-	98.1	100.0

### DAILY PIVOT LEVELS

Symbol	Expiry	LTP	S2	S1	Pivot	R1	R2
GOLD	05 AUG 2019	32959	32634	32797	32888	33051	33142
SILVER	05 JUL 2019	37105	36500	36803	36962	37265	37424
COPPER	28 JUN 2019	409.1	402.8	406.0	407.7	410.9	412.6
CRUDEOIL	19 JUN 2019	3643	3450	3546	3633	3729	3816
ZINC	28 JUN 2019	203.8	201.9	202.9	204.4	205.3	206.8
LEAD	28 JUN 2019	154.4	152.4	153.4	154.6	155.6	156.7
ALUMINIUM	28 JUN 2019	143.6	142.0	142.8	143.4	144.1	144.7
NICKEL	28 JUN 2019	867.4	851.8	859.6	872.3	880.1	892.8
NATURALGAS	25 JUN 2019	163.2	160.1	161.7	163.7	165.3	167.3
MENTHAOIL	28 JUN 2019	1345.3	1310.1	1327.7	1340.7	1358.3	1371.3
GUARGUM5	20 JUN 2019	8567	8536	8551	8576	8591	8616
GUARGUM5	19 JUL 2019	8620	8520	8570	8619	8669	8718
GUARSEED10	20 JUN 2019	4240	4219	4230	4239	4250	4259
GUARSEED10	19 JUL 2019	4261	4205	4233	4260	4288	4315
CHANA	20 JUN 2019	4424	4395	4409	4435	4449	4475
CHANA	19 JUL 2019	4420	4379	4399	4434	4454	4489
CASTOR	20 JUN 2019	5450	5382	5416	5434	5468	5486
CASTOR	19 JUL 2019	5498	5381	5439	5483	5541	5585
RMSEED	20 JUN 2019	3930	3907	3918	3927	3938	3947
RMSEED	19 JUL 2019	3928	3909	3918	3930	3939	3951
SYBEANIDR	20 JUN 2019	3700	3690	3695	3700	3705	3710
SYBEANIDR	19 JUL 2019	3696	3639	3667	3689	3717	3739
SYOREF	20 JUN 2019	755.3	747.8	751.5	753.8	757.6	759.9
SYOREF	19 JUL 2019	736.7	731.8	734.3	736.3	738.8	740.8
COCUDAKL	20 JUN 2019	2809	2725	2767	2788	2830	2851
COCUDAKL	19 JUL 2019	2851	2756	2804	2833	2880	2909
JEERAUNJHA	20 JUN 2019	17530	17350	17440	17620	17710	17890
JEERAUNJHA	19 JUL 2019	17415	17072	17243	17522	17693	17972
TMCFCGRNZM	20 JUN 2019	6730	6694	6712	6730	6748	6766
TMCFCGRNZM	19 JUL 2019	6692	6567	6629	6725	6787	6883
DHANIYA	19 JUL 2019	7021	6948	6984	7037	7073	7126
DHANIYA	20 JUN 2019	6986	2329	4657	2329	4657	2329
COTTON	31 JUL 2019	21610	21363	21487	21583	21707	21803
COTTON	28 JUN 2019	21500	21247	21373	21457	21583	21667

### TEAM

ANALYST	DESIGNATION	EMAIL	TELEPHONE
Aditya Agarwal	Head – Technical Research	<a href="mailto:aditya@way2wealth.com">aditya@way2wealth.com</a>	+91 22-61462955
Harish Jurey	Sr. Technical Analyst – Forex & Commodity	<a href="mailto:harishjurey@way2wealth.com">harishjurey@way2wealth.com</a>	+91 22-61462952
Monil Shah, CMT	Sr. Technical Analyst – Equity & Forex	<a href="mailto:monilshah@way2wealth.com">monilshah@way2wealth.com</a>	+91 22-61462980
Mohit Agarwal	Technical Analyst – Forex & Commodity	<a href="mailto:mohitk@way2wealth.com">mohitk@way2wealth.com</a>	+91 22-61462954

#### Disclaimer

**Analyst Certification:** I, Mohit Agarwal, the research analyst and author of this report, hereby certify that the views expressed in this research report accurately reflect our personal views about the subject securities, issuers, products, sectors or industries. It is also certified that no part of the compensation of the analyst(s) was, is, or will be directly or indirectly related to the inclusion of specific recommendations or views in this research. The analyst(s), principally responsible for the preparation of this research report, receives compensation based on overall revenues of the company (Way2Wealth Brokers Private Limited, hereinafter referred to as Way2Wealth) and has taken reasonable care to achieve and maintain independence and objectivity in making any recommendations.

It is confirmed that Mohit Agarwal, the author of this report has not received any compensation from the companies mentioned in the report in the preceding 12 months. Our research professionals are paid in part based on the profitability of Way2Wealth, which include earnings from other business. Neither Way2Wealth nor its directors, employees, agents or representatives shall be liable for any damages whether direct or indirect, incidental, special or consequential including lost revenue or lost profits that may arise from or in connection with the use of the information contained in this report.

This report is for the personal information of the authorized recipient and does not construe to be any investment, legal or taxation advice to you. Way2Wealth is not soliciting any action based upon it. Nothing in this research shall be construed as a solicitation to buy or sell any security or product, or to engage in or refrain from engaging in any such transaction. The contents of this material are general and are neither comprehensive nor appropriate for every individual and are solely for the informational purposes of the readers. This material does not take into account the specific objectives, financial situation or needs of an individual/s or a Corporate/s or any entity/s.

This research has been prepared for the general use of the clients of the Way2Wealth and must not be copied, either in whole or in part, or distributed or redistributed to any other person in any form. If you are not the intended recipient you must not use or disclose the information in this research in any way. Though disseminated to all the customers simultaneously, not all customers may receive this report at the same time. Way2Wealth will not treat recipients as customers by virtue of their receiving this report. The distribution of this document in other jurisdictions may be restricted by the law applicable in the relevant jurisdictions and persons into whose possession this document comes should inform themselves about, and observe any such restrictions.

The report is based upon information obtained from sources believed to be reliable, but we do not make any representation or warranty that it is accurate, complete or up to date and it should not be relied upon as such. Way2Wealth or any of its affiliates or employees makes no warranties, either express or implied of any kind regarding any matter pertaining to this report, including, but not limited to warranties of suitability, fitness for a particular purpose, accuracy, timeliness, completeness or non-infringement. We accept no obligation to correct or update the information or opinions in it. Way2Wealth or any of its affiliates or employees shall not be in any way responsible for any loss or damage that may arise to any person from any inadvertent error in the information contained in this report. The recipients of this report should rely on their own investigations. In no event shall Way2Wealth be liable for any damages of any kind, including, but not limited to, indirect, special, incidental, consequential, punitive, lost profits, or lost opportunity, whether or not Way2Wealth has advised of the possibility of such damages.

This material contains statements that are forward-looking; such statements are based upon the current beliefs and expectations and are subject to significant risks and uncertainties. Actual results may differ from those set forth in the forward-looking statements. These uncertainties include but are not limited to: the risk of adverse movements or volatility in the securities markets or in interest or foreign exchange rates or indices; adverse impact from an economic slowdown; downturn in domestic or foreign securities and trading conditions or markets; increased competition; unfavourable political and diplomatic developments; change in the governmental or regulatory policies; failure of a corporate event and such others. This is not an offer to buy or sell or a solicitation of an offer to buy or sell any security or instrument or to participate in any particular trading strategy. No part of this material may be copied or duplicated in any form by any means or redistributed without the written consent of Way2Wealth. In no event shall any reader publish, retransmit, redistribute or otherwise reproduce any information provided by Way2Wealth in any format to anyone. Way2Wealth and its affiliates, officers, directors and employees including persons involved in the preparation or issuance of this report may from time to time have interest in securities / positions, financial or otherwise in the securities related to the information contained in this report.