

SENSEX	39741.36 (-0.04%)
NIFTY	11914.05 (+0.07%)

Sector Indices	Close	% Change
NIFTY AUTO	8117	-0.37
NIFTY BANK	30976	0.03
NIFTY ENERGY	16209	0.04
NIFTY FMCG	30355	-0.08
NIFTY IT	16317	-0.67
NIFTY METAL	2956	-0.21
NIFTY MIDCAP 50	4897	-0.42
NIFTY PHARMA	8149	-0.37
NIFTY PSU BANK	3067	-1.04
NIFTY REALTY	277	0.64

Key Levels - Nifty	
Support	11855 / 11800
Resistance	11970 / 12040

FII & DII Activities (Fig. in Cr)

Date	FII	DII
13-Jun-19	172.35	-444.87
12-Jun-19	-1050.43	271.15
11-Jun-19	95.79	-151.01
10-Jun-19	216.20	170.62
07-Jun-19	-478.84	179.79
06-Jun-19	-1448.99	-650.84
04-Jun-19	-416.08	-355.42
03-Jun-19	3068.88	-462.69
31-May-19	676.15	394.09
30-May-19	1664.74	-1122.60

Key Levels - Bank Nifty	
Support	30775 / 30620
Resistance	31175 / 31375

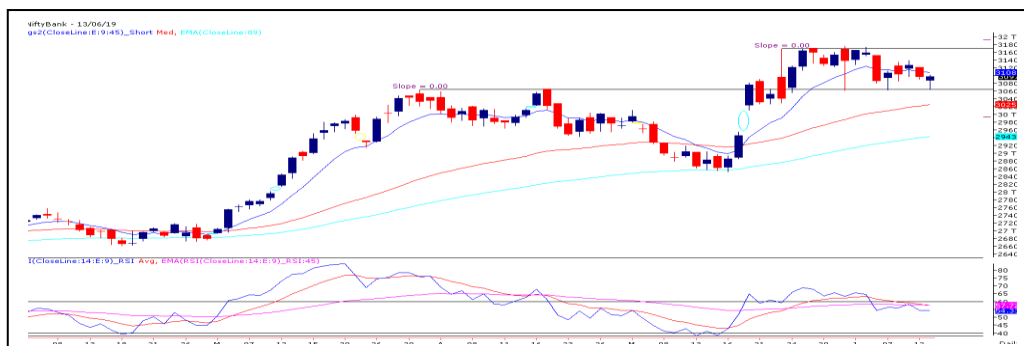
Nifty Spot Chart



Technical Outlook

On Thursday, the Nifty index opened lower with a mild gap owing to negative cues from the Asian bourses. Post opening, index extended its previous days pessimism and broke the pivot support of 11860 with an ease. Subsequently, nifty found support near 11800 and rebound sharply during the second half. In the process, index eventually ended the session with a nominal gain of 0.07%. At this juncture, nifty continued to consolidate in a broad range of 12100 – 11770 zone and only either way breakout or breakdown will dictate the near term direction. For the day, 11855 – 11800 are near term support on nifty whereas resistance seen near 11970 – 12040 levels respectively.

Bank Nifty Spot Chart



Technical Outlook

The Nifty Bank opened lower with a gap of nearly 89 points in line with the benchmark indices. Post opening, the sharp sell-off in YESBANK followed by INDUSINDBK weighs on market and index tested the lower band of its support zone. Subsequently, sharp recovery during the second half erased all its intraday losses and index eventually ended on flat note. For the third consecutive time index found support near 30620 which had drawn further attention and any break below this level will trigger fresh sell-off in market and index will correct till 30500 – 30265 levels respectively. Higher side, 31175 – 31375 are immediate hurdles.

Stocks For Today

Name	Entry	Target	Stop loss
KEC	Buy Around 322	332	318
CENTURYTEX	Buy Above 989	1020	974
CEAT	Sell Around 935	900	955

DailyPivotLevelsForNifty50Stocks					
ScripName	Support2	Support1	Pivot	Resist1	Resist2
ADANI PORTS	420.8	422.9	424.6	426.7	428.4
ASIAN PAINT	1413.5	1421.5	1430.2	1438.2	1446.9
AXIS BANK	805.5	812.8	818.1	825.5	830.8
BAJAJ-AUTO	2872.6	2897.6	2926.3	2951.4	2980.1
BAJAJ FINSV	8168.1	8230.2	8275.1	8337.2	8382.1
BAJ FINANCE	3480.8	3512.7	3531.8	3563.7	3582.8
BHARTIARTL	354.0	358.9	361.9	366.8	369.8
BPCL	379.9	384.4	387.4	391.9	394.9
BRITANNIA	2934.5	2959.5	2977.1	3002.1	3019.7
CIPLA	556.1	560.4	563.5	567.7	570.8
COALINDIA	250.9	253.2	256.0	258.3	261.1
DRREDDY	2537.6	2562.9	2582.8	2608.1	2628.0
EICHER MOT	19787.4	19974.7	20087.4	20274.7	20387.4
GAIL	304.3	306.2	309.0	310.9	313.7
GRASIM	856.1	880.4	893.9	918.2	931.7
HCLTECH	1086.9	1093.9	1100.0	1107.0	1113.1
HDFC	2147.1	2172.3	2186.6	2211.8	2226.0
HDFC BANK	2401.5	2423.1	2437.6	2459.2	2473.6
HEROMOTOCO	2634.2	2669.6	2720.8	2756.3	2807.5
HINDALCO	195.3	197.5	198.9	201.1	202.6
HINDUNILVR	1813.4	1829.5	1839.1	1855.1	1864.7
IBULHSGFIN	549.8	622.1	660.4	732.7	771.0
ICICIBANK	412.1	415.8	419.1	422.8	426.1
INDUSINDBK	1399.6	1444.2	1484.6	1529.2	1569.6
INFRATEL	266.3	268.8	271.7	274.2	277.1
INFY	736.1	739.4	743.3	746.6	750.5
IOC	155.3	158.0	160.8	163.5	166.2
ITC	277.4	279.0	280.2	281.8	283.0
JSWSTEEL	262.3	268.3	271.7	277.7	281.0
KOTAK BANK	1464.6	1484.3	1496.7	1516.4	1528.7
LT	1492.7	1505.1	1517.1	1529.5	1541.5
M&M	622.7	631.9	637.3	646.5	651.9
MARUTI	6707.5	6746.1	6804.9	6843.5	6902.3
NTPC	132.1	133.5	134.7	136.1	137.2
ONGC	165.5	167.2	168.7	170.4	171.9
POWERGRID	187.9	190.9	192.7	195.7	197.5
RELIANCE	1297.5	1312.4	1323.5	1338.4	1349.6
SBIN	336.9	341.7	344.6	349.4	352.2
SUNPHARMA	381.3	385.5	389.6	393.9	398.0
TATAMOTORS	162.5	165.0	166.9	169.4	171.3
TATASTEEL	492.4	497.5	501.7	506.8	511.0
TCS	2218.8	2236.4	2260.7	2278.4	2302.7
TECHM	730.9	737.5	745.1	751.7	759.3
TITAN	1268.2	1281.8	1290.0	1303.7	1311.9
ULTRACEMCO	4527.9	4549.1	4564.3	4585.4	4600.6
UPL	965.7	985.3	1003.2	1022.8	1040.7
VEDL	162.7	165.6	168.1	170.9	173.4
WIPRO	296.4	297.4	298.2	299.2	299.9
YESBANK	106.5	111.8	121.3	126.6	136.1
ZEEL	330.3	341.5	347.7	358.9	365.1

TEAM

ANALYST	DESIGNATION	EMAIL	TELEPHONE
Aditya Agarwal	Head – Technical Research	aditya@way2wealth.com	+91 22-61462955
Monil Shah, CMT	Sr. Technical Analyst – Equity & Forex	monilshah@way2wealth.com	+91 22-61462980
Harish Jujarey	Sr. Technical Analyst – Commodity	harishjujarey@way2wealth.com	+91 22-61462952
Mohit Agarwal	Technical Analyst – Forex & Commodity	mohitk@way2wealth.com	+91 22-61462954

Disclaimer

Analyst Certification: I, Monil Shah, CMT the research analyst and author of this report, hereby certify that the views expressed in this research report accurately reflect our personal views about the subject securities, issuers, products, sectors or industries. It is also certified that no part of the compensation of the analyst(s) was, is, or will be directly or indirectly related to the inclusion of specific recommendations or views in this research. The analyst(s), principally responsible for the preparation of this research report, receives compensation based on overall revenues of the company (Way2Wealth Brokers Private Limited, hereinafter referred to as Way2Wealth) and has taken reasonable care to achieve and maintain independence and objectivity in making any recommendations.

It is confirmed that Monil Shah, CMT the author of this report has not received any compensation from the companies mentioned in the report in the preceding 12 months. Our research professionals are paid in part based on the profitability of Way2Wealth, which include earnings from other business. Neither Way2Wealth nor its directors, employees, agents or representatives shall be liable for any damages whether direct or indirect, incidental, special or consequential including lost revenue or lost profits that may arise from or in connection with the use of the information contained in this report.

This report is for the personal information of the authorized recipient and does not construe to be any investment, legal or taxation advice to you. Way2Wealth is not soliciting any action based upon it. Nothing in this research shall be construed as a solicitation to buy or sell any security or product, or to engage in or refrain from engaging in any such transaction. The contents of this material are general and are neither comprehensive nor appropriate for every individual and are solely for the informational purposes of the readers. This material does not take into account the specific objectives, financial situation or needs of an individual/s or a Corporate/s or any entity/s.

This research has been prepared for the general use of the clients of the Way2Wealth and must not be copied, either in whole or in part, or distributed or redistributed to any other person in any form. If you are not the intended recipient you must not use or disclose the information in this research in any way. Though disseminated to all the customers simultaneously, not all customers may receive this report at the same time. Way2Wealth will not treat recipients as customers by virtue of their receiving this report. The distribution of this document in other jurisdictions may be restricted by the law applicable in the relevant jurisdictions and persons into whose possession this document comes should inform themselves about, and observe any such restrictions.

The report is based upon information obtained from sources believed to be reliable, but we do not make any representation or warranty that it is accurate, complete or up to date and it should not be relied upon as such. Way2Wealth or any of its affiliates or employees makes no warranties, either express or implied of any kind regarding any matter pertaining to this report, including, but not limited to warranties of suitability, fitness for a particular purpose, accuracy, timeliness, completeness or non-infringement. We accept no obligation to correct or update the information or opinions in it. Way2Wealth or any of its affiliates or employees shall not be in any way responsible for any loss or damage that may arise to any person from any inadvertent error in the information contained in this report. The recipients of this report should rely on their own investigations. In no event shall Way2Wealth be liable for any damages of any kind, including, but not limited to, indirect, special, incidental, consequential, punitive, lost profits, or lost opportunity, whether or not Way2Wealth has advised of the possibility of such damages.

This material contains statements that are forward-looking; such statements are based upon the current beliefs and expectations and are subject to significant risks and uncertainties. Actual results may differ from those set forth in the forward-looking statements. These uncertainties include but are not limited to: the risk of adverse movements or volatility in the securities markets or in interest or foreign exchange rates or indices; adverse impact from an economic slowdown; downturn in domestic or foreign securities and trading conditions or markets; increased competition; unfavourable political and diplomatic developments; change in the governmental or regulatory policies; failure of a corporate event and such others. This is not an offer to buy or sell or a solicitation of an offer to buy or sell any security or instrument or to participate in any particular trading strategy. No part of this material may be copied or duplicated in any form by any means or redistributed without the written consent of Way2Wealth. In no event shall any reader publish, retransmit, redistribute or otherwise reproduce any information provided by Way2Wealth in any format to anyone. Way2Wealth and its affiliates, officers, directors and employees including persons involved in the preparation or issuance of this report may from time to time have interest in securities / positions, financial or otherwise in the securities related to the information contained in this report.