

MCX SILVERMINI JUNE



- Bullions have been trading with positive bias since the start of April 2021. In this Silver prices have moved higher from the lows of 62500 to the highs near 72600 level till now. International Silver Spot prices have been intact in higher high higher low pattern and as such there are no signs of reversal as of now which is positive sign.
- The above daily chart shows that slowly and steadily prices have been moving higher from last few weeks. Recently it witnessed correction from the highs but managed to find support at the 20 days of EMA and formed bullish candlestick pattern. RSI has went into consolidation along with the rise and there is no sign of momentum loss which is a bullish sign. On downside 69900 followed by 68000 will act as support levels.
- In short, Silvermini June trend is positive. Move above 72500 will open up target towards 74000-74250 levels.

Today's Actionable

Commodity	Expiry	Action	Entry	Target	Stop loss
Gold	June	Buy	Around 47600	47900	47450
Nickel	May	Buy	Around 1295	1320	1280
RM Seed	June	Sell	Around 7380	7250	7460

MCX

Commodity	Expiry	Close (Rs)	Change	% Change
GOLD	04 JUN 2021	47676	238	0.5
SILVER	05 JUL 2021	71085	612	0.87
CRUDEOIL	19 MAY 2021	4786	114	2.44
NATURALGAS	25 MAY 2021	216.4	-1.9	-0.87
COPPER	31 MAY 2021	773.8	-5.8	-0.74
NICKEL	31 MAY 2021	1302.6	20.6	1.61
ALUMINIUM	31 MAY 2021	194.15	-1.75	-0.89
LEAD	31 MAY 2021	172	0.4	0.23
ZINC	31 MAY 2021	231.15	1.5	0.65
COTTON	31 MAY 2021	22050	-210	-0.94

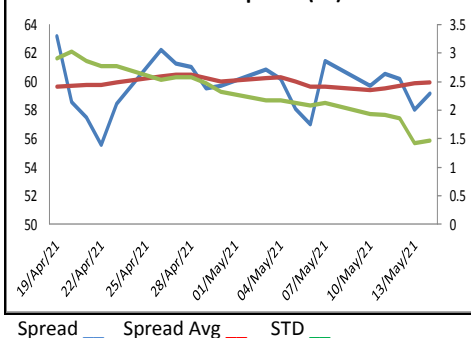
NCDEX

Commodity	Expiry	Close (Rs)	Change	% Change
GUARGUM5	18 JUN 2021	6497	-68	-1.04
GUARSEED10	18 JUN 2021	4341	-49	-1.12
CHANA	18 JUN 2021	5428	-20	-0.37
CASTOR	18 JUN 2021	5218	-28	-0.53
RMSEED	18 JUN 2021	7345	-155	-2.07
SYBEANIDR	18 JUN 2021	7316	-77	-1.04
SYOREF	18 JUN 2021	1454.2	12.5	0.87
COCUDAKL	18 JUN 2021	2632	-61	-2.27
JEERAUNJHA	18 JUN 2021	14100	-35	-0.25
TMCFGRNZM	18 JUN 2021	7806	-42	-0.54

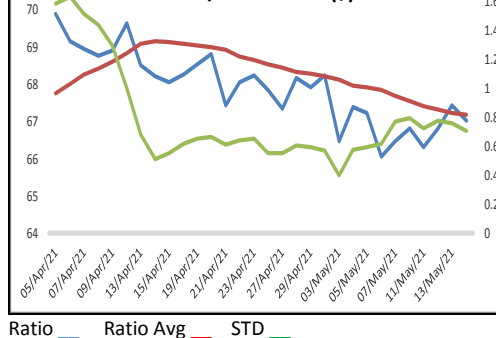
GLOBAL

Exchange	Commodity	Close (\$)	Change	% Change
Comex	Gold	1,843.85	19.85	1.09%
Comex	Silver	27.51	0.45	1.67%
Nymex	Crude Oil WTI	65.51	1.69	2.65%
ICE	Brent Oil	68.83	1.78	2.65%
Nymex	Natural Gas	2.97	0.00	-0.07%
LME	Copper	10,233.00	-58.25	-0.57%
LME	Nickel	17,647.50	312.50	1.80%
LME	Aluminium	2,446.25	-8.25	-0.34%
LME	Lead	2,154.50	4.50	0.21%
LME	Zinc	2,940.00	23.25	0.80%

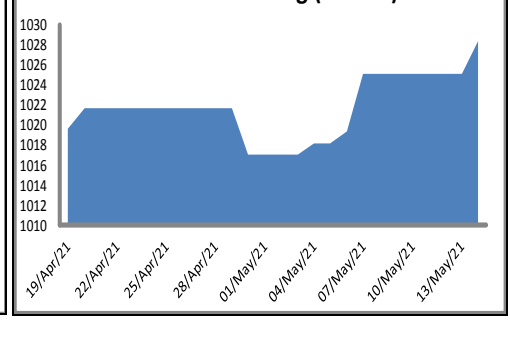
Zinc-Lead Spread (Rs)



Gold/Silver Ratio (\$)



SPDR Gold holding (Tonnes)



ECONOMIC DATA & EVENTS						
TIME(IST)	COUNTRY	DATA & EVENTS	ACTUAL	FORECAST	PREVIOUS	
12:00 PM	INR	WPI Inflation (YoY) (Apr)	-	9.05%	7.39%	
-	-	-	-	-	-	
-	-	-	-	-	-	
-	-	-	-	-	-	
-	-	-	-	-	-	
-	-	-	-	-	-	
-	-	-	-	-	-	
-	-	-	-	-	-	

DAILY PIVOT LEVELS							
Symbol	Expiry	LTP	S2	S1	Pivot	R1	R2
GOLD	INTL. SPOT (\$)	1842	1809	1826	1836	1852	1863
GOLD	04 JUN 2021	47676	47201	47438	47575	47812	47949
SILVER	INTL. SPOT (\$)	27.41	26.54	26.97	27.23	27.66	27.91
SILVER	05 JUL 2021	71085	69502	70293	70877	71668	72252
CRUDEOIL	19 MAY 2021	4786	4604	4695	4743	4834	4882
NATURALGAS	25 MAY 2021	216.4	212.5	214.5	217.7	219.7	222.9
COPPER	31 MAY 2021	773.8	761.9	767.9	774.8	780.8	787.7
NICKEL	31 MAY 2021	1302.6	1245.7	1274.2	1289.4	1317.9	1333.1
ALUMINIUM	31 MAY 2021	194.2	189.6	191.9	194.1	196.4	198.7
LEAD	31 MAY 2021	172.0	169.6	170.8	171.7	172.9	173.8
ZINC	31 MAY 2021	231.2	225.9	228.5	230.2	232.8	234.5
COTTON	31 MAY 2021	22050	21703	21877	22013	22187	22323
MENTHAOIL	31 MAY 2021	963.3	955.1	959.2	962.1	966.2	969.1
CPO	31 MAY 2021	1248.5	1233.9	1241.2	1247.3	1254.6	1260.7
CPO	30 JUN 2021	1227.7	1215.6	1221.6	1226.1	1232.1	1236.6
GUARGUM5	18 JUN 2021	6497	6372	6434	6523	6585	6674
GUARGUM5	20 JUL 2021	6589	6490	6540	6599	6649	6708
GUARSEED10	18 JUN 2021	4341	4298	4319	4355	4376	4412
GUARSEED10	20 JUL 2021	4400	4368	4384	4413	4429	4458
CHANA	18 JUN 2021	5428	5369	5399	5440	5470	5511
CHANA	20 JUL 2021	5479	5428	5454	5490	5516	5552
CASTOR	18 JUN 2021	5218	5177	5197	5223	5243	5269
CASTOR	20 JUL 2021	5298	5271	5285	5295	5309	5319
RMSEED	18 JUN 2021	7345	7208	7277	7383	7452	7558
RMSEED	20 JUL 2021	7335	7197	7266	7372	7441	7547
SYBEANIDR	18 JUN 2021	7316	7172	7244	7322	7394	7472
SYBEANIDR	20 JUL 2021	6965	6850	6908	6981	7039	7112
SYOREF	18 JUN 2021	1454.2	1427.5	1440.8	1449.2	1462.5	1470.9
SYOREF	20 JUL 2021	1423.1	1397.5	1410.3	1418.8	1431.6	1440.1
COCUDAKL	18 JUN 2021	2632	2585	2609	2649	2673	2713
COCUDAKL	20 JUL 2021	2718	2688	2703	2730	2745	2772
JEERAUNJHA	18 JUN 2021	14100	13890	13995	14160	14265	14430
JEERAUNJHA	20 JUL 2021	0	0	0	0	0	0
TMCFGRNZM	18 JUN 2021	7806	7618	7712	7856	7950	8094
TMCFGRNZM	20 JUL 2021	8018	7834	7926	8026	8118	8218

TEAM

ANALYST	DESIGNATION	EMAIL	TELEPHONE
Monil Shah, CMT	AVP – Technical Analyst – Equity & Forex	monilshah@way2wealth.com	+9122-61462980
Rakesh Gandhi	Technical Analyst – Forex & Commodity	rakeshgandhi@way2wealth.com	+9122-61462982

Disclaimer

Analyst Certification: I, Rakesh Gandhi, the research analyst and author of this report, hereby certify that the views expressed in this research report accurately reflect our personal views about the subject securities, issuers, products, sectors or industries. It is also certified that no part of the compensation of the analyst(s) was, is, or will be directly or indirectly related to the inclusion of specific recommendations or views in this research. The analyst(s), principally responsible for the preparation of this research report, receives compensation based on overall revenues of the company (Way2Wealth Brokers Private Limited, hereinafter referred to as Way2Wealth) and has taken reasonable care to achieve and maintain independence and objectivity in making any recommendations.

It is confirmed that Rakesh Gandhi, the author of this report has not received any compensation from the companies mentioned in the report in the preceding 12 months. Our research professionals are paid in part based on the profitability of Way2Wealth, which include earnings from other business. Neither Way2Wealth nor its directors, employees, agents or representatives shall be liable for any damages whether direct or indirect, incidental, special or consequential including lost revenue or lost profits that may arise from or in connection with the use of the information contained in this report.

This report is for the personal information of the authorized recipient and does not construe to be any investment, legal or taxation advice to you. Way2Wealth is not soliciting any action based upon it. Nothing in this research shall be construed as a solicitation to buy or sell any security or product, or to engage in or refrain from engaging in any such transaction. The contents of this material are general and are neither comprehensive nor appropriate for every individual and are solely for the informational purposes of the readers. This material does not take into account the specific objectives, financial situation or needs of an individual/s or a Corporate/s or any entity/s.

This research has been prepared for the general use of the clients of the Way2Wealth and must not be copied, either in whole or in part, or distributed or redistributed to any other person in any form. If you are not the intended recipient you must not use or disclose the information in this research in any way. Though disseminated to all the customers simultaneously, not all customers may receive this report at the same time. Way2Wealth will not treat recipients as customers by virtue of their receiving this report. The distribution of this document in other jurisdictions may be restricted by the law applicable in the relevant jurisdictions and persons into whose possession this document comes should inform themselves about, and observe any such restrictions.

The report is based upon information obtained from sources believed to be reliable, but we do not make any representation or warranty that it is accurate, complete or up to date and it should not be relied upon as such. Way2Wealth or any of its affiliates or employees makes no warranties, either express or implied of any kind regarding any matter pertaining to this report, including, but not limited to warranties of suitability, fitness for a particular purpose, accuracy, timeliness, completeness or non-infringement. We accept no obligation to correct or update the information or opinions in it. Way2Wealth or any of its affiliates or employees shall not be in any way responsible for any loss or damage that may arise to any person from any inadvertent error in the information contained in this report. The recipients of this report should rely on their own investigations. In no event shall Way2Wealth be liable for any damages of any kind, including, but not limited to, indirect, special, incidental, consequential, punitive, lost profits, or lost opportunity, whether or not Way2Wealth has advised of the possibility of such damages.

This material contains statements that are forward-looking; such statements are based upon the current beliefs and expectations and are subject to significant risks and uncertainties. Actual results may differ from those set forth in the forward-looking statements. These uncertainties include but are not limited to: the risk of adverse movements or volatility in the securities markets or in interest or foreign exchange rates or indices; adverse impact from an economic slowdown; downturn in domestic or foreign securities and trading conditions or markets; increased competition; unfavourable political and diplomatic developments; change in the governmental or regulatory policies; failure of a corporate event and such others. This is not an offer to buy or sell or a solicitation of an offer to buy or sell any security or instrument or to participate in any particular trading strategy. No part of this material may be copied or duplicated in any form by any means or redistributed without the written consent of Way2Wealth. In no event shall any reader publish, retransmit, redistribute or otherwise reproduce any information provided by Way2Wealth in any format to anyone. Way2Wealth and its affiliates, officers, directors and employees including persons involved in the preparation or issuance of this report may from time to time have interest in securities / positions, financial or otherwise in the securities related to the information contained in this report.