

SENSEX 37663.56 (-0.50%)
 NIFTY 11385.05 (-0.44%)

Sector Indices	Close	% Change
NIFTY AUTO	10831	0.26
NIFTY BANK	27827	-0.7
NIFTY ENERGY	15239	-0.47
NIFTY FMCG	31731	0.02
NIFTY IT	15044	0.23
NIFTY METAL	3337	-2.27
NIFTY MIDCAP 50	5103	0.15
NIFTY PHARMA	9595	1.2
NIFTY PSU BANK	3127	-0.77
NIFTY REALTY	274	-0.51

Key Levels - Nifty

Support	11340 / 11300
Resistance	11430 / 11470

FII & DII Activities (Fig. in Cr)

Date	FII	DII
16-Aug-18	-825.08	133.78
14-Aug-18	-378.84	391.47
13-Aug-18	-971.86	216.29
10-Aug-18	-510.66	457.83
09-Aug-18	370.68	-85.39
08-Aug-18	568.63	30.25
07-Aug-18	314.83	-319.90
06-Aug-18	248.70	218.64
03-Aug-18	-5.87	87.08
02-Aug-18	-639.87	-340.30

Key Levels - Bank Nifty

Support	27740 / 27550
Resistance	27945 / 28125

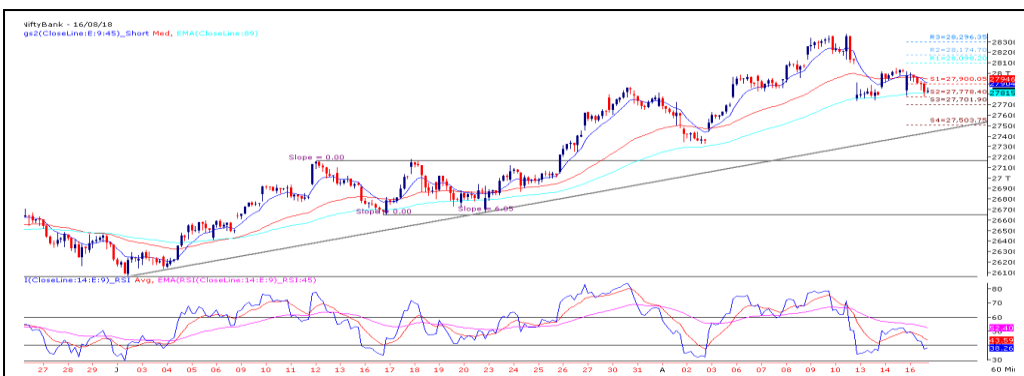
Nifty Spot Chart



Technical Outlook

The nifty made its opening tick tad below 11400 marks owing to the negative global cues. Post opening, nifty precisely took support at lower band of hourly channel pattern and rebound sharply. Subsequently, failure to cross the Tuesday's high of 11450 trigger fresh sell-off. In the process, nifty broke the Tuesday's low and eventually closed below 11400. On hourly chart, nifty broke the channel pattern which doesn't bode well for bulls. Also, the hourly RSI (14) resist near 60 levels. Now, 11340 will be an immediate support below which nifty will correct till 11300 – 11244. On the up side, 11430 – 11470 are stiff hurdle in the near term.

Bank Nifty Spot Chart



Technical Outlook

The Nifty Bank opened tad below its previous day's low and support base buying interest during the initial hour of trade immediate lift the index higher. Subsequently, index found resistance near Tuesday's high of 28053 which led to fresh sell-off. As a result, index ended near the lowest point of the day. At this juncture, index is hovering near the hourly 89-EMA. Now, 28020 – 28125 zone likely to act as a stiff resistance. On the flip side, 27740 will act as an immediate support below which index likely to correct till 27550 – 27328 levels respectively.

Stocks For Today

Name	Entry	Target	Stop loss
HCLTECH	Buy Around 993	1020	979
STAR	Buy Around 427	455	415
ESCORTS	Sell Around 875	852	887

Daily Pivot Levels For Nifty 50 Stocks

Scrip Name	Support 2	Support 1	Pivot	Resist 1	Resist 2
ADANI PORTS	363.77	367.03	370.57	373.83	377.37
ASIANPAINT	1 374.27	1 384.53	1 397.27	1 407.53	1 420.27
AXISBANK	599.48	611.47	623.23	635.22	646.98
BAJAJ-AUTO	2 610.50	2 639.00	2 658.50	2 687.00	2 706.50
BAJAJFINSV	6 953.47	7 014.73	7 107.37	7 168.63	7 261.27
BAJFINANCE	2 776.27	2 816.43	2 862.22	2 902.38	2 948.17
BHARTIARTL	361.60	366.80	370.40	375.60	379.20
BPCL	370.43	374.37	379.18	383.12	387.93
CIPLA	621.78	635.07	647.53	660.82	673.28
COALINDIA	276.70	279.70	283.00	286.00	289.30
DRREDDY	2 237.98	2 295.72	2 328.58	2 386.32	2 419.18
EICHERMOT	28 100.02	28 451.93	28 960.97	29 312.88	29 821.92
GAIL	370.47	382.13	390.77	402.43	411.07
GRASIM	968.85	984.15	997.05	1 012.35	1 025.25
HCLTECH	978.95	988.10	1 001.45	1 010.60	1 023.95
HDFC	1 857.47	1 874.33	1 905.42	1 922.28	1 953.37
HDFCBANK	2 055.97	2 065.83	2 076.27	2 086.13	2 096.57
HEROMOTOCO	3 204.72	3 243.68	3 274.07	3 313.03	3 343.42
HINDALCO	211.17	213.63	215.97	218.43	220.77
HINDPETRO	259.82	262.98	268.42	271.58	277.02
HINDUNILVR	1 718.63	1 728.02	1 739.98	1 749.37	1 761.33
IBULHSGFIN	1 230.48	1 245.22	1 266.08	1 280.82	1 301.68
ICICIBANK	323.63	328.97	334.08	339.42	344.53
INDUSINDBK	1 963.67	1 973.93	1 984.42	1 994.68	2 005.17
INFRATEL	276.58	278.62	281.03	283.07	285.48
INFY	1 401.58	1 415.57	1 425.23	1 439.22	1 448.88
IOC	155.70	157.10	159.55	160.95	163.40
ITC	303.62	305.53	307.02	308.93	310.42
KOTAKBANK	1 224.13	1 234.77	1 253.38	1 264.02	1 282.63
LT	1 203.45	1 217.55	1 240.10	1 254.20	1 276.75
LUPIN	816.78	833.27	842.48	858.97	868.18
M&M	932.25	941.75	953.50	963.00	974.75
MARUTI	9 022.88	9 111.72	9 173.83	9 262.67	9 324.78
NTPC	155.05	156.80	157.90	159.65	160.75
ONGC	162.22	163.33	164.97	166.08	167.72
POWERGRID	185.37	186.53	188.27	189.43	191.17
RELIANCE	1 183.60	1 192.20	1 204.10	1 212.70	1 224.60
SBIN	285.63	289.17	293.78	297.32	301.93
SUNPHARMA	595.03	607.37	614.53	626.87	634.03
TATAMOTORS	242.23	246.77	249.78	254.32	257.33
TATASTEEL	555.72	561.63	569.17	575.08	582.62
TCS	1 982.80	1 995.65	2 007.85	2 020.70	2 032.90
TECHM	654.75	661.70	671.20	678.15	687.65
TITAN	909.82	914.63	921.82	926.63	933.82
ULTRACEMCO	4 147.87	4 180.68	4 232.87	4 265.68	4 317.87
UPL	598.15	603.90	612.90	618.65	627.65
VEDL	202.80	205.80	208.35	211.35	213.90
WIPRO	273.88	276.67	280.83	283.62	287.78
YESBANK	368.52	373.48	379.17	384.13	389.82
ZEEL	481.08	490.77	502.88	512.57	524.68

TEAM

ANALYST	DESIGNATION	EMAIL	TELEPHONE
Aditya Agarwal	Head – Technical Research	aditya@way2wealth.com	+91 22-61462955
Monil Shah, CMT	Sr. Technical Analyst – Equity & Forex	monilshah@way2wealth.com	+91 22-61462980
Harish Jujarey	Sr. Technical Analyst – Commodity	harishjujarey@way2wealth.com	+91 22-61462952
Mohit Agarwal	Technical Analyst – Forex & Commodity	mohitk@way2wealth.com	+91 22-61462954

Disclaimer

Analyst Certification: I, Monil Shah, CMT the research analyst and author of this report, hereby certify that the views expressed in this research report accurately reflect our personal views about the subject securities, issuers, products, sectors or industries. It is also certified that no part of the compensation of the analyst(s) was, is, or will be directly or indirectly related to the inclusion of specific recommendations or views in this research. The analyst(s), principally responsible for the preparation of this research report, receives compensation based on overall revenues of the company (Way2Wealth Brokers Private Limited, hereinafter referred to as Way2Wealth) and has taken reasonable care to achieve and maintain independence and objectivity in making any recommendations.

It is confirmed that Monil Shah, CMT the author of this report has not received any compensation from the companies mentioned in the report in the preceding 12 months. Our research professionals are paid in part based on the profitability of Way2Wealth, which include earnings from other business. Neither Way2Wealth nor its directors, employees, agents or representatives shall be liable for any damages whether direct or indirect, incidental, special or consequential including lost revenue or lost profits that may arise from or in connection with the use of the information contained in this report.

This report is for the personal information of the authorized recipient and does not construe to be any investment, legal or taxation advice to you. Way2Wealth is not soliciting any action based upon it. Nothing in this research shall be construed as a solicitation to buy or sell any security or product, or to engage in or refrain from engaging in any such transaction. The contents of this material are general and are neither comprehensive nor appropriate for every individual and are solely for the informational purposes of the readers. This material does not take into account the specific objectives, financial situation or needs of an individual/s or a Corporate/s or any entity/s.

This research has been prepared for the general use of the clients of the Way2Wealth and must not be copied, either in whole or in part, or distributed or redistributed to any other person in any form. If you are not the intended recipient you must not use or disclose the information in this research in any way. Though disseminated to all the customers simultaneously, not all customers may receive this report at the same time. Way2Wealth will not treat recipients as customers by virtue of their receiving this report. The distribution of this document in other jurisdictions may be restricted by the law applicable in the relevant jurisdictions and persons into whose possession this document comes should inform themselves about, and observe any such restrictions.

The report is based upon information obtained from sources believed to be reliable, but we do not make any representation or warranty that it is accurate, complete or up to date and it should not be relied upon as such. Way2Wealth or any of its affiliates or employees makes no warranties, either express or implied of any kind regarding any matter pertaining to this report, including, but not limited to warranties of suitability, fitness for a particular purpose, accuracy, timeliness, completeness or non-infringement. We accept no obligation to correct or update the information or opinions in it. Way2Wealth or any of its affiliates or employees shall not be in any way responsible for any loss or damage that may arise to any person from any inadvertent error in the information contained in this report. The recipients of this report should rely on their own investigations. In no event shall Way2Wealth be liable for any damages of any kind, including, but not limited to, indirect, special, incidental, consequential, punitive, lost profits, or lost opportunity, whether or not Way2Wealth has advised of the possibility of such damages.

This material contains statements that are forward-looking; such statements are based upon the current beliefs and expectations and are subject to significant risks and uncertainties. Actual results may differ from those set forth in the forward-looking statements. These uncertainties include but are not limited to: the risk of adverse movements or volatility in the securities markets or in interest or foreign exchange rates or indices; adverse impact from an economic slowdown; downturn in domestic or foreign securities and trading conditions or markets; increased competition; unfavorable political and diplomatic developments; change in the governmental or regulatory policies; failure of a corporate event and such others. This is not an offer to buy or sell or a solicitation of an offer to buy or sell any security or instrument or to participate in any particular trading strategy. No part of this material may be copied or duplicated in any form by any means or redistributed without the written consent of Way2Wealth. In no event shall any reader publish, retransmit, redistribute or otherwise reproduce any information provided by Way2Wealth in any format to anyone. Way2Wealth and its affiliates, officers, directors and employees including persons involved in the preparation or issuance of this report may from time to time have interest in securities / positions, financial or otherwise in the securities related to the information contained in this report.