

MCX CRUDE OIL JUNE



- Crude oil prices opened flat in the last session and prices corrected gradually for first half of the session till low of 3624. Later prices recovered for the remaining session till high of 3668 and closed slightly lower.
- Prices have been consolidating around 61.8% Fibonacci retracement of its rally from low of 2993, till high of 4692, which is placed around 3642 level.
- Prices are expected to recover from these levels if break above its immediate resistance placed around its short term declining trend line currently near 3685 level towards next resistance placed around its recent swing high of 3797.
- On the lower side, immediate supports are placed around 3620 and 3520 levels. Buying above 3685 level is recommended in Crude oil for the day.

Today's Actionable

Commodity	Expiry	Action	Entry	Target	Stop loss
Crude oil	June	Buy	Above 3685	3795	3620
Copper	June	Buy	Around 409	417	404
Chana	July	Sell	Around 4350	4170	4470

MCX

Commodity	Expiry	Close (Rs)	Change	% Change
GOLD	05 AUG 2019	33021	-24	-0.07
SILVER	05 JUL 2019	37092	57	0.15
COPPER	28 JUN 2019	409.85	3.4	0.84
CRUDEOIL	19 JUN 2019	3645	-30	-0.82
ZINC	28 JUN 2019	205.45	1.75	0.86
LEAD	28 JUN 2019	154.6	1.05	0.68
ALUMINIUM	28 JUN 2019	142.15	-0.05	-0.04
NICKEL	28 JUN 2019	866.5	-10.3	-1.17
NATURALGAS	25 JUN 2019	166.8	-0.2	-0.12
MENTHAOIL	28 JUN 2019	1349.9	26.9	2.03

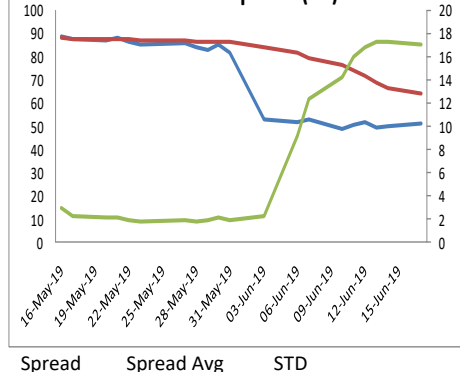
NCDEX

Commodity	Expiry	Close (Rs)	Change	% Change
GUARGUM5	20 JUN 2019	8460	-74	-0.87
GUARSEED10	20 JUN 2019	4175	-34.5	-0.82
CHANA	20 JUN 2019	4300	-120	-2.71
CASTOR	20 JUN 2019	5282	-150	-2.76
RMSEED	20 JUN 2019	3928	-8	-0.2
SYBEANIDR	20 JUN 2019	3670	-41	-1.1
SYOREF	20 JUN 2019	759	1.5	0.2
JEERAUNJHA	20 JUN 2019	17550	100	0.57
TMCFGRNZM	20 JUN 2019	6620	-38	-0.57
COCUDAKL	20 JUN 2019	2850	39	1.39

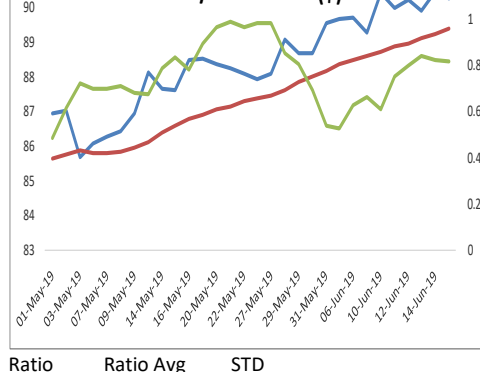
GLOBAL

Exchange	Commodity	Close (\$)	Change	% Change
Comex	Gold	1342.25	-2.25	-0.17%
Comex	Silver	14.818	0.015	0.10%
Nymex	Crude Oil WTI	52.06	-0.45	-0.86%
ICE	Brent Oil	61.24	-0.77	-1.24%
Nymex	Natural Gas	2.38	-0.007	-0.29%
LME	Copper	5848.75	40.75	0.70%
LME	Lead	1884	10.75	0.57%
LME	Zinc	2472.25	17	0.69%
LME	Aluminium	1758.25	-0.5	-0.03%
LME	Nickel	11765	-152.5	-1.28%

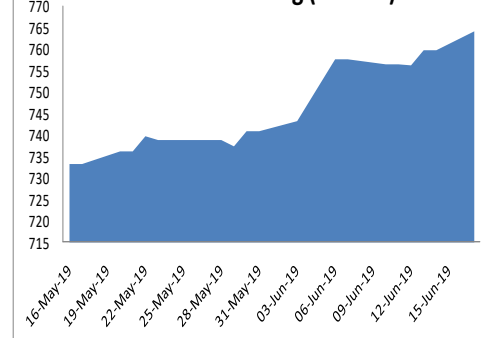
Zinc-Lead Spread (Rs)



Gold/Silver Ratio (\$)



SPDR Gold holding (Tonnes)



ECONOMIC DATA & EVENTS					
TIME(IST)	COUNTRY	DATA & EVENTS	ACTUAL	FORECAST	PREVIOUS
2:30 PM	EU	Core CPI (YoY) (May)	-	0.8%	0.8%
2:30 PM	EU	CPI (YoY) (May)	-	1.2%	1.2%
2:30 PM	EU	CPI (MoM) (May)	-	0.2%	0.7%
2:30 PM	EU	Trade Balance (Apr)	-	8.8B	22.5B
2:30 PM	EU	ZEW Economic Sentiment	-	-3.6	-1.6
6:00 PM	US	Building Permits (May)	-	1.296M	1.290M
6:00 PM	US	Building Permits (MoM) (May)	-	0.0%	0.2%
6:00 PM	US	Housing Starts (May)	-	1.239M	1.235M
6:00 PM	US	Housing Starts (MoM) (May)	-	-0.4%	5.7%

DAILY PIVOT LEVELS							
Symbol	Expiry	LTP	S2	S1	Pivot	R1	R2
GOLD	05 AUG 2019	33021	32762	32891	33016	33145	33270
SILVER	05 JUL 2019	37092	36797	36945	37097	37245	37397
COPPER	28 JUN 2019	409.9	403.4	406.6	408.4	411.6	413.4
CRUDEOIL	19 JUN 2019	3645	3591	3618	3651	3678	3711
ZINC	28 JUN 2019	205.5	200.9	203.2	204.4	206.7	207.9
LEAD	28 JUN 2019	154.6	152.9	153.7	154.4	155.2	155.9
ALUMINIUM	28 JUN 2019	142.2	140.5	141.3	142.1	143.0	143.8
NICKEL	28 JUN 2019	866.5	852.2	859.4	870.9	878.1	889.6
NATURALGAS	25 JUN 2019	166.8	163.5	165.2	166.8	168.5	170.1
MENTHAOIL	28 JUN 2019	1349.9	1326.6	1338.3	1347.6	1359.3	1368.6
GUARGUM5	20 JUN 2019	8460	8326	8393	8489	8556	8652
GUARGUM5	19 JUL 2019	8485	8360	8423	8515	8578	8670
GUARSEED10	20 JUN 2019	4175	4171	4173	4177	4179	4183
GUARSEED10	19 JUL 2019	4202	4135	4168	4221	4255	4308
CHANA	20 JUN 2019	4300	4227	4263	4337	4373	4447
CHANA	19 JUL 2019	4269	4136	4202	4314	4380	4492
CASTOR	20 JUN 2019	5282	5141	5211	5353	5423	5565
CASTOR	19 JUL 2019	5350	5165	5257	5399	5491	5633
RMSEED	20 JUN 2019	3928	3915	3921	3935	3941	3955
RMSEED	19 JUL 2019	3905	3852	3878	3917	3943	3982
SYBEANIDR	20 JUN 2019	3670	3620	3645	3685	3710	3750
SYBEANIDR	19 JUL 2019	3647	3566	3607	3678	3719	3790
SYOREF	20 JUN 2019	759.0	755.1	757.1	758.9	760.9	762.7
SYOREF	19 JUL 2019	740.7	734.7	737.7	740.8	743.8	747.0
COCUDAKL	20 JUN 2019	2850	2817	2833	2842	2858	2867
COCUDAKL	19 JUL 2019	2890	2779	2834	2866	2921	2953
JEERAUNJHA	20 JUN 2019	17550	17353	17452	17548	17647	17743
JEERAUNJHA	19 JUL 2019	17345	17148	17247	17318	17417	17488
TMCFRNZM	20 JUN 2019	6620	6593	6607	6633	6647	6673
TMCFRNZM	19 JUL 2019	6576	6472	6524	6612	6664	6752
DHANIYA	19 JUL 2019	6980	6782	6881	7010	7109	7238
DHANIYA	20 JUN 2019	6981	6930	6956	7006	7032	7082
COTTON	31 JUL 2019	21770	21557	21663	21727	21833	21897
COTTON	28 JUN 2019	21690	21410	21550	21630	21770	21850

TEAM

ANALYST	DESIGNATION	EMAIL	TELEPHONE
Aditya Agarwal	Head – Technical Research	aditya@way2wealth.com	+9122-61462955
Harish Jujarey	Sr. Technical Analyst – Forex & Commodity	harishjujarey@way2wealth.com	+9122-61462952
Monil Shah, CMT	Sr. Technical Analyst – Equity & Forex	monilshah@way2wealth.com	+9122-61462980
Mohit Agarwal	Technical Analyst – Forex & Commodity	mohitk@way2wealth.com	+9122-61462954

Disclaimer

Analyst Certification: I, Mohit Agarwal, the research analyst and author of this report, hereby certify that the views expressed in this research report accurately reflect our personal views about the subject securities, issuers, products, sectors or industries. It is also certified that no part of the compensation of the analyst(s) was, is, or will be directly or indirectly related to the inclusion of specific recommendations or views in this research. The analyst(s), principally responsible for the preparation of this research report, receives compensation based on overall revenues of the company (Way2Wealth Brokers Private Limited, hereinafter referred to as Way2Wealth) and has taken reasonable care to achieve and maintain independence and objectivity in making any recommendations.

It is confirmed that Mohit Agarwal, the author of this report has not received any compensation from the companies mentioned in the report in the preceding 12 months. Our research professionals are paid in part based on the profitability of Way2Wealth, which include earnings from other business. Neither Way2Wealth nor its directors, employees, agents or representatives shall be liable for any damages whether direct or indirect, incidental, special or consequential including lost revenue or lost profits that may arise from or in connection with the use of the information contained in this report.

This report is for the personal information of the authorized recipient and does not construe to be any investment, legal or taxation advice to you. Way2Wealth is not soliciting any action based upon it. Nothing in this research shall be construed as a solicitation to buy or sell any security or product, or to engage in or refrain from engaging in any such transaction. The contents of this material are general and are neither comprehensive nor appropriate for every individual and are solely for the informational purposes of the readers. This material does not take into account the specific objectives, financial situation or needs of an individual/s or a Corporate/s or any entity/s.

This research has been prepared for the general use of the clients of the Way2Wealth and must not be copied, either in whole or in part, or distributed or redistributed to any other person in any form. If you are not the intended recipient you must not use or disclose the information in this research in any way. Though disseminated to all the customers simultaneously, not all customers may receive this report at the same time. Way2Wealth will not treat recipients as customers by virtue of their receiving this report. The distribution of this document in other jurisdictions may be restricted by the law applicable in the relevant jurisdictions and persons into whose possession this document comes should inform themselves about, and observe any such restrictions.

The report is based upon information obtained from sources believed to be reliable, but we do not make any representation or warranty that it is accurate, complete or up to date and it should not be relied upon as such. Way2Wealth or any of its affiliates or employees makes no warranties, either express or implied of any kind regarding any matter pertaining to this report, including, but not limited to warranties of suitability, fitness for a particular purpose, accuracy, timeliness, completeness or non-infringement. We accept no obligation to correct or update the information or opinions in it. Way2Wealth or any of its affiliates or employees shall not be in any way responsible for any loss or damage that may arise to any person from any inadvertent error in the information contained in this report. The recipients of this report should rely on their own investigations. In no event shall Way2Wealth be liable for any damages of any kind, including, but not limited to, indirect, special, incidental, consequential, punitive, lost profits, or lost opportunity, whether or not Way2Wealth has advised of the possibility of such damages.

This material contains statements that are forward-looking; such statements are based upon the current beliefs and expectations and are subject to significant risks and uncertainties. Actual results may differ from those set forth in the forward-looking statements. These uncertainties include but are not limited to: the risk of adverse movements or volatility in the securities markets or in interest or foreign exchange rates or indices; adverse impact from an economic slowdown; downturn in domestic or foreign securities and trading conditions or markets; increased competition; unfavourable political and diplomatic developments; change in the governmental or regulatory policies; failure of a corporate event and such others. This is not an offer to buy or sell or a solicitation of an offer to buy or sell any security or instrument or to participate in any particular trading strategy. No part of this material may be copied or duplicated in any form by any means or redistributed without the written consent of Way2Wealth. In no event shall any reader publish, retransmit, redistribute or otherwise reproduce any information provided by Way2Wealth in any format to anyone. Way2Wealth and its affiliates, officers, directors and employees including persons involved in the preparation or issuance of this report may from time to time have interest in securities / positions, financial or otherwise in the securities related to the information contained in this report.