

MCX NATURAL GAS OCTOBER



- In the last week, Natural Gas October traded with volatility where in movement between 445.80 to the lows of 391.50 level was witnessed. By end of the week, it managed to close with a minor loss and formed Doji candlestick pattern on a weekly chart. This suggest indecisiveness among traders as of now.
- The above daily chart shows that after the correction witnessed from the high of 485 to the lows of 391.50, prices have arrived near the channel support as well as 20 days of EMA. Hence, price action from hereon will be crucial to see.
- Any sustainability below 410 level will suggest that correction is extending on downside whereas break above 445 will resume the uptrend.
- In short, Natural Gas October is in range. Break below 410 can increase the weakness towards 390 followed by 360 levels. On the other side, move above 460 can eye 485 levels.

Today's Actionable

Commodity	Expiry	Action	Entry	Target	Stop loss
Silver Mini	Nov	Buy	Around 63300	64700	62300
Aluminium	Oct	Buy	Around 252	257	250
Natural Gas	Oct	Sell	Around 415	395	426

MCX

Commodity	Expiry	Close (Rs)	Change	% Change
GOLD	03 DEC 2021	47213	-669	-1.4
SILVER	03 DEC 2021	63271	-284	-0.45
CRUDEOIL	19 OCT 2021	6169	71	1.16
NATURALGAS	26 OCT 2021	410.6	-23.3	-5.37
COPPER	29 OCT 2021	795.35	18.7	2.41
NICKEL	29 OCT 2021	1550.9	49.4	3.29
ALUMINIUM	29 OCT 2021	254.25	4.05	1.62
LEAD	29 OCT 2021	190.85	6.2	3.36
ZINC	29 OCT 2021	322.5	28.1	9.54
COTTON	29 OCT 2021	30530	390	1.29

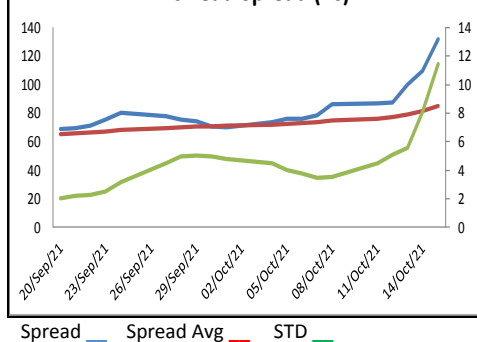
NCDEX

Commodity	Expiry	Close (Rs)	Change	% Change
GUARGUM5	18 NOV 2021	10871	0	0
GUARSEED10	18 NOV 2021	6097	0	0
CHANA	18 NOV 2021	0	0	0
CASTOR	17 NOV 2021	6200	0	0
RMSEED	18 NOV 2021	8074	0	0
SYBEANIDR	18 NOV 2021	5256	0	0
SYOREF	18 NOV 2021	1247	8.1	0.65
COCUDAKL	20 DEC 2021	2506	0	0
JEERAUNJHA	18 NOV 2021	14640	0	0
TMCFGRNZM	18 NOV 2021	7276	0	0

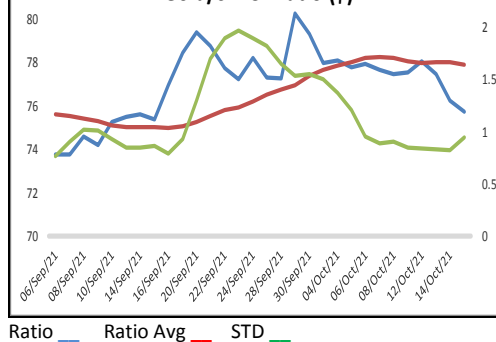
GLOBAL

Exchange	Commodity	Close (\$)	Change	% Change
Comex	Gold	1,768.20	-29.70	-1.65%
Comex	Silver	23.35	-0.13	-0.53%
Nymex	Crude Oil WTI	82.53	1.22	1.50%
ICE	Brent Oil	84.84	0.84	1.00%
Nymex	Natural Gas	5.42	-0.27	-4.66%
LME	Copper	10,206.00	200.25	2.00%
LME	Nickel	19,912.50	545.00	2.81%
LME	Aluminium	3,172.50	36.00	1.15%
LME	Lead	2,333.50	36.00	1.57%
LME	Zinc	3,814.00	289.00	8.20%

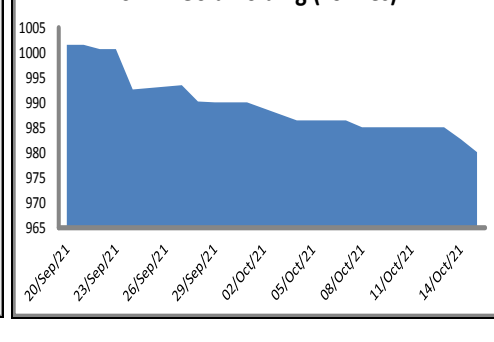
Zinc-Lead Spread (Rs)



Gold/Silver Ratio (\$)



SPDR Gold holding (Tonnes)



ECONOMIC DATA & EVENTS						
TIME(IST)	COUNTRY	DATA & EVENTS	ACTUAL	FORECAST	PREVIOUS	
6:45 PM	US	Industrial Production (MoM) (Sep)	-	0.20%	0.40%	
6:45 PM	US	Manufacturing Production (MoM) (Sep)	-	0.30%	0.20%	
-	-	-	-	-	-	
-	-	-	-	-	-	
-	-	-	-	-	-	
-	-	-	-	-	-	
-	-	-	-	-	-	
-	-	-	-	-	-	
-	-	-	-	-	-	
DAILY PIVOT LEVELS						
Symbol	Expiry	LTP	S2	S1	Pivot	R1 R2
GOLD	INTL. SPOT (\$)	1766	1743	1755	1776	1787 1808
GOLD	03 DEC 2021	47213	46780	46996	47337	47553 47894
SILVER	INTL. SPOT (\$)	23.26	22.76	23.01	23.30	23.55 23.83
SILVER	03 DEC 2021	63271	62354	62812	63139	63597 63924
CRUDEOIL	19 OCT 2021	6169	6094	6131	6162	6199 6230
NATURALGAS	26 OCT 2021	410.6	394.8	402.7	416.2	424.1 437.6
COPPER	29 OCT 2021	795.4	776.2	785.8	794.4	804.0 812.6
NICKEL	29 OCT 2021	1550.9	1485.0	1518.0	1540.4	1573.4 1595.8
ALUMINIUM	29 OCT 2021	254.3	246.5	250.4	254.1	258.0 261.7
LEAD	29 OCT 2021	190.9	180.6	185.7	190.7	195.8 200.8
ZINC	29 OCT 2021	322.5	299.3	310.9	317.7	329.3 336.1
COTTON	29 OCT 2021	30530	29923	30227	30783	31087 31643
MENTHAOIL	29 OCT 2021	923.4	307.8	615.6	307.8	615.6 307.8
CPO	29 OCT 2021	1099.8	1089.2	1094.5	1103.5	1108.8 1117.8
CPO	30 NOV 2021	1095.1	1084.6	1089.9	1097.4	1102.7 1110.2
GUARGUM5	18 NOV 2021	10871	3624	7247	3624	7247 3624
GUARGUM5	20 DEC 2021	10999	3666	7333	3666	7333 3666
GUARSEED10	18 NOV 2021	6097	2032	4065	2032	4065 2032
GUARSEED10	20 DEC 2021	6154	2051	4103	2051	4103 2051
CHANA	18 NOV 2021	0	0	0	0	0 0
CHANA	20 DEC 2021	0	0	0	0	0 0
CASTOR	17 NOV 2021	6200	2067	4133	2067	4133 2067
CASTOR	20 DEC 2021	6264	2088	4176	2088	4176 2088
RMSEED	18 NOV 2021	8074	2691	5383	2691	5383 2691
RMSEED	20 DEC 2021	8066	2689	5377	2689	5377 2689
SYBEANIDR	18 NOV 2021	5256	1752	3504	1752	3504 1752
SYBEANIDR	20 DEC 2021	5297	1766	3531	1766	3531 1766
SYOREF	18 NOV 2021	1247.0	1236.3	1241.7	1246.8	1252.2 1257.3
SYOREF	20 DEC 2021	1236.5	1229.6	1233.0	1235.3	1238.7 1241.0
COCUDAKL	20 DEC 2021	2506	835	1671	835	1671 835
COCUDAKL	20 JAN 2022	2516	839	1677	839	1677 839
JEERAUNJHA	18 NOV 2021	14640	4880	9760	4880	9760 4880
JEERAUNJHA	20 DEC 2021	14740	4913	9827	4913	9827 4913
TMCFGRNZM	18 NOV 2021	7276	2425	4851	2425	4851 2425
TMCFGRNZM	20 DEC 2021	7350	2450	4900	2450	4900 2450

TEAM

ANALYST	DESIGNATION	EMAIL	TELEPHONE
Harish Jujarey	Sr. Technical Analyst – Equity, Forex & Commodity	harishjujarey@way2wealth.com	+9122-61462981

Disclaimer

Analyst Certification: I, Harish Jujarey, the research analyst and author of this report, hereby certify that the views expressed in this research report accurately reflect our personal views about the subject securities, issuers, products, sectors or industries. It is also certified that no part of the compensation of the analyst(s) was, is, or will be directly or indirectly related to the inclusion of specific recommendations or views in this research. The analyst(s), principally responsible for the preparation of this research report, receives compensation based on overall revenues of the company (Way2Wealth Brokers Private Limited, hereinafter referred to as Way2Wealth) and has taken reasonable care to achieve and maintain independence and objectivity in making any recommendations.

It is confirmed that Harish Jujarey, the author of this report has not received any compensation from the companies mentioned in the report in the preceding 12 months. Our research professionals are paid in part based on the profitability of Way2Wealth, which include earnings from other business. Neither Way2Wealth nor its directors, employees, agents or representatives shall be liable for any damages whether direct or indirect, incidental, special or consequential including lost revenue or lost profits that may arise from or in connection with the use of the information contained in this report.

This report is for the personal information of the authorized recipient and does not construe to be any investment, legal or taxation advice to you. Way2Wealth is not soliciting any action based upon it. Nothing in this research shall be construed as a solicitation to buy or sell any security or product, or to engage in or refrain from engaging in any such transaction. The contents of this material are general and are neither comprehensive nor appropriate for every individual and are solely for the informational purposes of the readers. This material does not take into account the specific objectives, financial situation or needs of an individual/s or a Corporate/s or any entity/s.

This research has been prepared for the general use of the clients of the Way2Wealth and must not be copied, either in whole or in part, or distributed or redistributed to any other person in any form. If you are not the intended recipient you must not use or disclose the information in this research in any way. Though disseminated to all the customers simultaneously, not all customers may receive this report at the same time. Way2Wealth will not treat recipients as customers by virtue of their receiving this report. The distribution of this document in other jurisdictions may be restricted by the law applicable in the relevant jurisdictions and persons into whose possession this document comes should inform themselves about, and observe any such restrictions.

The report is based upon information obtained from sources believed to be reliable, but we do not make any representation or warranty that it is accurate, complete or up to date and it should not be relied upon as such. Way2Wealth or any of its affiliates or employees makes no warranties, either express or implied of any kind regarding any matter pertaining to this report, including, but not limited to warranties of suitability, fitness for a particular purpose, accuracy, timeliness, completeness or non-infringement. We accept no obligation to correct or update the information or opinions in it. Way2Wealth or any of its affiliates or employees shall not be in any way responsible for any loss or damage that may arise to any person from any inadvertent error in the information contained in this report. The recipients of this report should rely on their own investigations. In no event shall Way2Wealth be liable for any damages of any kind, including, but not limited to, indirect, special, incidental, consequential, punitive, lost profits, or lost opportunity, whether or not Way2Wealth has advised of the possibility of such damages.

This material contains statements that are forward-looking; such statements are based upon the current beliefs and expectations and are subject to significant risks and uncertainties. Actual results may differ from those set forth in the forward-looking statements. These uncertainties include but are not limited to: the risk of adverse movements or volatility in the securities markets or in interest or foreign exchange rates or indices; adverse impact from an economic slowdown; downturn in domestic or foreign securities and trading conditions or markets; increased competition; unfavourable political and diplomatic developments; change in the governmental or regulatory policies; failure of a corporate event and such others. This is not an offer to buy or sell or a solicitation of an offer to buy or sell any security or instrument or to participate in any particular trading strategy. No part of this material may be copied or duplicated in any form by any means or redistributed without the written consent of Way2Wealth. In no event shall any reader publish, retransmit, redistribute or otherwise reproduce any information provided by Way2Wealth in any format to anyone. Way2Wealth and its affiliates, officers, directors and employees including persons involved in the preparation or issuance of this report may from time to time have interest in securities / positions, financial or otherwise in the securities related to the information contained in this report.