

MCX NICKEL FEB



- Nickel prices opened flat in the last session and prices rose gradually for most of the session till high of 891.40.
- Prices have bounced in the last two sessions after retesting its short term declining trend line break out level in the last week.
- Prices are expected to rise further from these levels towards immediate resistance placed around 908 level.
- On the lower side, immediate supports are placed around 878 and 858 levels.
- Buying on minor pullbacks is recommended in Nickel for the day.

Today's Actionable

Commodity	Expiry	Action	Entry	Target	Stop loss
Nickel	Feb	Buy	Around 878	908	858
Silver	Mar	Buy	Around 40100	41000	39480
Soybean	Mar	Buy	Around 3770	3870	3700

MCX

Commodity	Expiry	Close (Rs)	Change	% Change
GOLD	05 APR 2019	33608	224	0.67
SILVER	05 MAR 2019	40170	208	0.52
COPPER	28 FEB 2019	447.75	5.95	1.35
CRUDEOIL	19 FEB 2019	4011	60	1.52
ZINC	28 FEB 2019	190	-0.45	-0.24
LEAD	28 FEB 2019	144.6	-3.05	-2.07
ALUMINIUM	28 FEB 2019	130.8	-0.35	-0.27
NICKEL	28 FEB 2019	886.5	5.5	0.62
NATURALGAS	25 FEB 2019	187.8	1.2	0.64
MENTHAOIL	28 FEB 2019	1672	59.6	3.7

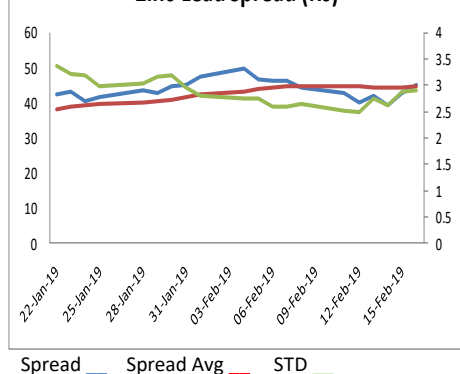
NCDEX

Commodity	Expiry	Close (Rs)	Change	% Change
GUARGUM5	20 FEB 2019	8345	-71	-0.84
GUARSEED10	20 FEB 2019	4220.5	0	0
CHANA	19 MAR 2019	4261	5	0.12
CASTOR	20 FEB 2019	5224	-128	-2.39
RMSEED	20 FEB 2019	3857	14	0.36
SYBEANIDR	20 FEB 2019	3733	7	0.19
SYOREF	20 FEB 2019	782.8	6.8	0.88
JEERAUNJHA	19 MAR 2019	15660	100	0.64
TMCFCGRNZM	16 APR 2019	6252	-54	-0.86
COCUDAKL	20 FEB 2019	1963.5	-37.5	-1.87

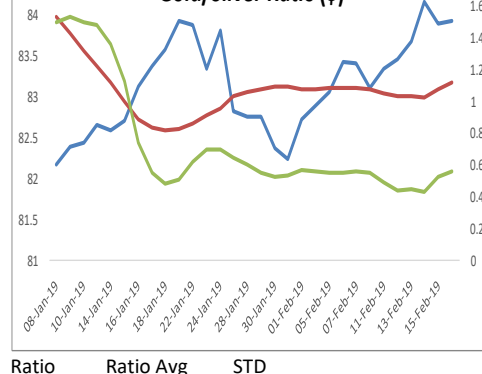
GLOBAL

Exchange	Commodity	Close (\$)	Change	% Change
Comex	Gold	1329.7	2	0.15%
Comex	Silver	15.78	0.037	0.24%
Nymex	Crude Oil WTI	56.47	0.49	0.88%
ICE	Brent Oil	66.53	0.28	0.42%
Nymex	Natural Gas	2.63	0.005	0.19%
LME	Copper	6263.25	39	0.63%
LME	Lead	2031.5	-45.25	-2.18%
LME	Zinc	2640.5	-22.5	-0.84%
LME	Aluminium	1852.25	-4.25	-0.23%
LME	Nickel	12457.5	45	0.36%

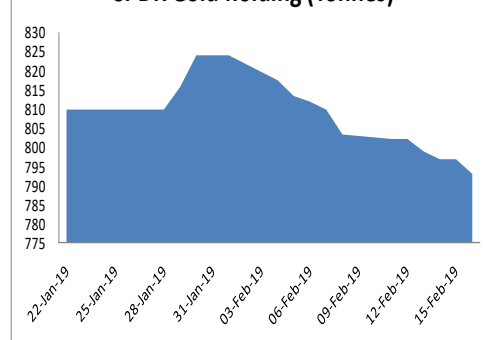
Zinc-Lead Spread (Rs)



Gold/Silver Ratio (\$)



SPDR Gold holding (Tonnes)



ECONOMIC DATA & EVENTS

TIME(IST)	COUNTRY	DATA & EVENTS	ACTUAL	FORECAST	PREVIOUS
3:30 PM	EU	ZEW Economic Sentiment	-	-18.2	-20.9
7:20 PM	US	FOMC Member Mester Speaks	-	-	-
8:30 PM	EU	ECB's Praet Speaks	-	-	-
-	-	-	-	-	-
-	-	-	-	-	-
-	-	-	-	-	-
-	-	-	-	-	-

DAILY PIVOT LEVELS

Symbol	Expiry	LTP	S2	S1	Pivot	R1	R2
GOLD	05 APR 2019	33608	33386	33497	33561	33672	33736
SILVER	05 MAR 2019	40170	39969	40069	40181	40281	40393
COPPER	28 FEB 2019	447.8	440.7	444.2	446.6	450.1	452.5
CRUDEOIL	19 FEB 2019	4011	3910	3961	3994	4045	4078
ZINC	28 FEB 2019	190.0	186.0	188.0	189.4	191.4	192.7
LEAD	28 FEB 2019	144.6	141.5	143.1	145.8	147.3	150.0
ALUMINIUM	28 FEB 2019	130.8	129.5	130.2	131.1	131.8	132.7
NICKEL	28 FEB 2019	886.5	871.2	878.9	885.1	892.8	899.0
NATURALGAS	25 FEB 2019	187.8	183.8	185.8	188.2	190.2	192.6
MENTHAOIL	28 FEB 2019	1672.0	1584.9	1628.4	1651.9	1695.4	1718.9
GUARGUM5	20 FEB 2019	8345	8345	8345	8345	8345	8345
GUARGUM5	19 MAR 2019	8427	8366	8396	8441	8471	8516
GUARSEED10	20 FEB 2019	4221	1407	2814	1407	2814	1407
GUARSEED10	19 MAR 2019	4246	4222	4234	4246	4258	4270
CHANA	19 MAR 2019	4261	4214	4237	4254	4277	4294
CHANA	16 APR 2019	4291	4246	4269	4284	4307	4322
CASTOR	20 FEB 2019	5224	5167	5195	5225	5253	5283
CASTOR	19 MAR 2019	5246	5162	5204	5252	5294	5342
RMSEED	20 FEB 2019	3857	3849	3853	3859	3863	3869
RMSEED	16 APR 2019	3912	3869	3891	3904	3926	3939
SYBEANIDR	20 FEB 2019	3733	3687	3710	3725	3748	3763
SYBEANIDR	19 MAR 2019	3782	3704	3743	3765	3804	3826
SYOREF	20 FEB 2019	782.8	774.9	778.9	781.4	785.4	787.9
SYOREF	19 MAR 2019	770.8	762.1	766.4	768.9	773.2	775.7
COCUDAKL	20 FEB 2019	1964	1956	1960	1964	1968	1972
COCUDAKL	19 MAR 2019	1980	1938	1959	1984	2005	2030
JEERAUNJHA	19 MAR 2019	15660	15497	15578	15632	15713	15767
JEERAUNJHA	16 APR 2019	15310	15103	15207	15278	15382	15453
TMCFGNRM	16 APR 2019	6252	6179	6215	6269	6305	6359
TMCFGNRM	20 MAY 2019	6350	6258	6304	6346	6392	6434
DHANIYA	20 MAY 2019	6334	6183	6259	6303	6379	6423
DHANIYA	16 APR 2019	6261	6102	6181	6231	6310	6360
COTTON	29 MAR 2019	20300	20113	20207	20353	20447	20593
COTTON	28 FEB 2019	20050	19817	19933	20097	20213	20377

TEAM

ANALYST	DESIGNATION	EMAIL	TELEPHONE
Aditya Agarwal	Head – Technical Research	aditya@way2wealth.com	+9122-61462955
Harish Jurey	Sr. Technical Analyst – Forex & Commodity	harishjurey@way2wealth.com	+9122-61462952
Mohit Agarwal	Technical Analyst – Forex & Commodity	mohitk@way2wealth.com	+9122-61462954
Monil Shah, CMT	Technical Analyst – Equity & Forex	monilshah@way2wealth.com	+9122-61462980

Disclaimer

Analyst Certification: I, Mohit Agarwal, the research analyst and author of this report, hereby certify that the views expressed in this research report accurately reflect our personal views about the subject securities, issuers, products, sectors or industries. It is also certified that no part of the compensation of the analyst(s) was, is, or will be directly or indirectly related to the inclusion of specific recommendations or views in this research. The analyst(s), principally responsible for the preparation of this research report, receives compensation based on overall revenues of the company (Way2Wealth Brokers Private Limited, hereinafter referred to as Way2Wealth) and has taken reasonable care to achieve and maintain independence and objectivity in making any recommendations.

It is confirmed that Mohit Agarwal, the author of this report has not received any compensation from the companies mentioned in the report in the preceding 12 months. Our research professionals are paid in part based on the profitability of Way2Wealth, which include earnings from other business. Neither Way2Wealth nor its directors, employees, agents or representatives shall be liable for any damages whether direct or indirect, incidental, special or consequential including lost revenue or lost profits that may arise from or in connection with the use of the information contained in this report.

This report is for the personal information of the authorized recipient and does not construe to be any investment, legal or taxation advice to you. Way2Wealth is not soliciting any action based upon it. Nothing in this research shall be construed as a solicitation to buy or sell any security or product, or to engage in or refrain from engaging in any such transaction. The contents of this material are general and are neither comprehensive nor appropriate for every individual and are solely for the informational purposes of the readers. This material does not take into account the specific objectives, financial situation or needs of an individual/s or a Corporate/s or any entity/s.

This research has been prepared for the general use of the clients of the Way2Wealth and must not be copied, either in whole or in part, or distributed or redistributed to any other person in any form. If you are not the intended recipient you must not use or disclose the information in this research in any way. Though disseminated to all the customers simultaneously, not all customers may receive this report at the same time. Way2Wealth will not treat recipients as customers by virtue of their receiving this report. The distribution of this document in other jurisdictions may be restricted by the law applicable in the relevant jurisdictions and persons into whose possession this document comes should inform themselves about, and observe any such restrictions.

The report is based upon information obtained from sources believed to be reliable, but we do not make any representation or warranty that it is accurate, complete or up to date and it should not be relied upon as such. Way2Wealth or any of its affiliates or employees makes no warranties, either express or implied of any kind regarding any matter pertaining to this report, including, but not limited to warranties of suitability, fitness for a particular purpose, accuracy, timeliness, completeness or non-infringement. We accept no obligation to correct or update the information or opinions in it. Way2Wealth or any of its affiliates or employees shall not be in any way responsible for any loss or damage that may arise to any person from any inadvertent error in the information contained in this report. The recipients of this report should rely on their own investigations. In no event shall Way2Wealth be liable for any damages of any kind, including, but not limited to, indirect, special, incidental, consequential, punitive, lost profits, or lost opportunity, whether or not Way2Wealth has advised of the possibility of such damages.

This material contains statements that are forward-looking; such statements are based upon the current beliefs and expectations and are subject to significant risks and uncertainties. Actual results may differ from those set forth in the forward-looking statements. These uncertainties include but are not limited to: the risk of adverse movements or volatility in the securities markets or in interest or foreign exchange rates or indices; adverse impact from an economic slowdown; downturn in domestic or foreign securities and trading conditions or markets; increased competition; unfavourable political and diplomatic developments; change in the governmental or regulatory policies; failure of a corporate event and such others. This is not an offer to buy or sell or a solicitation of an offer to buy or sell any security or instrument or to participate in any particular trading strategy. No part of this material may be copied or duplicated in any form by any means or redistributed without the written consent of Way2Wealth. In no event shall any reader publish, retransmit, redistribute or otherwise reproduce any information provided by Way2Wealth in any format to anyone. Way2Wealth and its affiliates, officers, directors and employees including persons involved in the preparation or issuance of this report may from time to time have interest in securities / positions, financial or otherwise in the securities related to the information contained in this report.