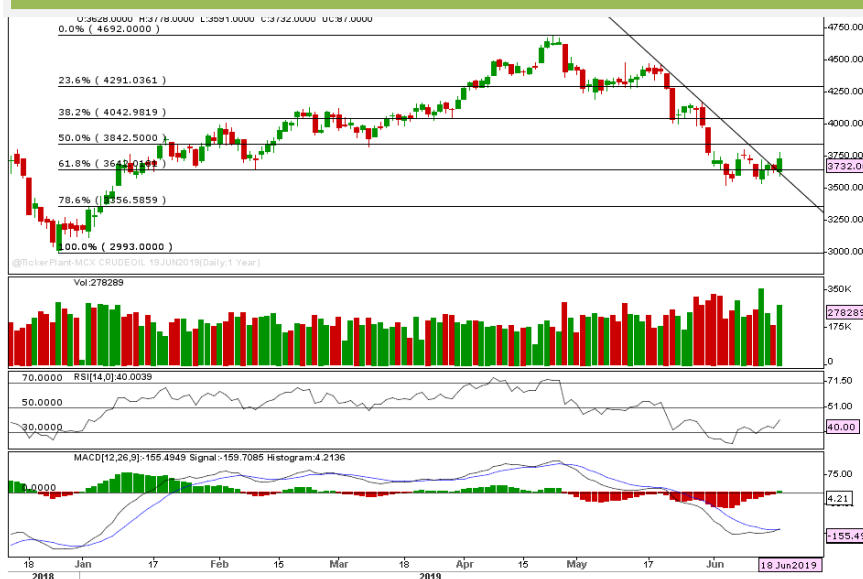


MCX CRUDE OIL JUNE



- Crude oil prices opened slightly lower in the last session and prices fell further for first half of the session till low of 3591. Later prices recovered strongly for the remaining session till high of 3778.
- Prices have broken out from its strong resistance of short term declining trend line in the last session.
- MACD (12,26,9) has also given a positive crossover on the daily chart.
- Prices are expected to recover further from these levels towards immediate resistance placed around its previous swing high of 3797.
- On the lower side, immediate supports are placed around 3670 and 3590 levels.
- Buying on minor pullbacks is recommended in Crude oil for the day.

Today's Actionable

Commodity	Expiry	Action	Entry	Target	Stop loss
Crude oil	June	Buy	Around 3670	3795	3590
Copper	June	Buy	Around 412	423	404.50
Chana	July	Sell	Around 4270	4135	4360

MCX

Commodity	Expiry	Close (Rs)	Change	% Change
GOLD	05 AUG 2019	33024	3	0.01
SILVER	05 JUL 2019	37306	214	0.58
COPPER	28 JUN 2019	415.75	5.9	1.44
CRUDEOIL	19 JUN 2019	3732	87	2.39
ZINC	28 JUN 2019	208	2.55	1.24
LEAD	28 JUN 2019	156.25	1.65	1.07
ALUMINIUM	28 JUN 2019	142.85	0.7	0.49
NICKEL	28 JUN 2019	877.3	10.8	1.25
NATURALGAS	25 JUN 2019	162.8	-4	-2.4
MENTHAOIL	28 JUN 2019	1333.3	-16.6	-1.23

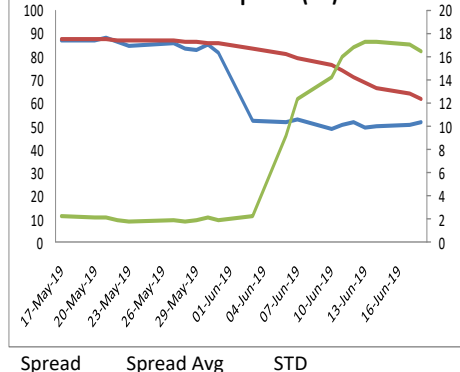
NCDEX

Commodity	Expiry	Close (Rs)	Change	% Change
GUARGUM5	20 JUN 2019	8450	-32	-0.38
GUARSEED10	20 JUN 2019	4228.5	50.5	1.21
CHANA	20 JUN 2019	4216	-84	-1.95
CASTOR	20 JUN 2019	5308	-20	-0.38
RMSEED	20 JUN 2019	3930	0	0
SYBEANIDR	20 JUN 2019	3687	-17	-0.46
SYOREF	20 JUN 2019	761.2	2.3	0.3
JEERAUNJHA	20 JUN 2019	17545	-5	-0.03
TMCFGRNZM	20 JUN 2019	6400	-238	-3.59
COCUDAKL	20 JUN 2019	2835	2	0.07

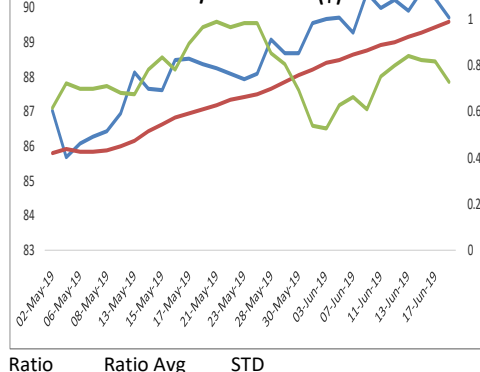
GLOBAL

Exchange	Commodity	Close (\$)	Change	% Change
Comex	Gold	1349.85	6.95	0.52%
Comex	Silver	14.992	0.163	1.10%
Nymex	Crude Oil WTI	53.91	1.74	3.34%
ICE	Brent Oil	62.02	1.08	1.77%
Nymex	Natural Gas	2.341	-0.045	-1.89%
LME	Copper	5955.25	104.5	1.79%
LME	Lead	1917.25	33.75	1.79%
LME	Zinc	2512.25	39.75	1.61%
LME	Aluminium	1779.5	21.5	1.22%
LME	Nickel	11952.5	187.5	1.59%

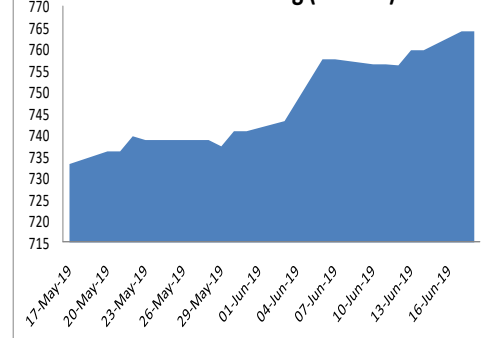
Zinc-Lead Spread (Rs)



Gold/Silver Ratio (\$)



SPDR Gold holding (Tonnes)



ECONOMIC DATA & EVENTS

TIME(IST)	COUNTRY	DATA & EVENTS	ACTUAL	FORECAST	PREVIOUS
7:30 PM	EU	ECB President Draghi Speaks	-	-	-
8:00 PM	US	Crude Oil Inventories	-	-2.033M	2.206M
11:30 PM	US	FOMC Economic Projections	-	-	-
11:30 PM	US	FOMC Statement	-	-	-
11:30 PM	US	Fed Interest Rate Decision	-	2.5%	2.5%
-	-	-	-	-	-
-	-	-	-	-	-
-	-	-	-	-	-
-	-	-	-	-	-

DAILY PIVOT LEVELS

Symbol	Expiry	LTP	S2	S1	Pivot	R1	R2
GOLD	05 AUG 2019	33024	32723	32873	33066	33216	33409
SILVER	05 JUL 2019	37306	36875	37091	37277	37493	37679
COPPER	28 JUN 2019	415.8	405.2	410.5	413.8	419.1	422.4
CRUDEOIL	19 JUN 2019	3732	3513	3623	3700	3810	3887
ZINC	28 JUN 2019	208.0	202.8	205.4	206.8	209.4	210.9
LEAD	28 JUN 2019	156.3	152.8	154.5	155.5	157.3	158.3
ALUMINIUM	28 JUN 2019	142.9	141.5	142.2	142.6	143.3	143.7
NICKEL	28 JUN 2019	877.3	855.9	866.6	875.3	886.0	894.7
NATURALGAS	25 JUN 2019	162.8	158.7	160.8	164.3	166.4	169.9
MENTHAOIL	28 JUN 2019	1333.3	1297.4	1315.3	1339.2	1357.1	1381.0
GUARGUM5	20 JUN 2019	8450	8450	8450	8450	8450	8450
GUARGUM5	19 JUL 2019	8601	8373	8487	8560	8674	8747
GUARSEED10	20 JUN 2019	4229	4213	4221	4228	4236	4243
GUARSEED10	19 JUL 2019	4273	4132	4202	4245	4315	4358
CHANA	20 JUN 2019	4216	4172	4194	4222	4244	4272
CHANA	19 JUL 2019	4241	4178	4209	4249	4280	4320
CASTOR	20 JUN 2019	5308	5252	5280	5324	5352	5396
CASTOR	19 JUL 2019	5402	5245	5323	5381	5459	5517
RMSEED	20 JUN 2019	3930	1310	2620	1310	2620	1310
RMSEED	19 JUL 2019	3914	3875	3895	3912	3932	3949
SYBEANIDR	20 JUN 2019	3687	3652	3669	3680	3697	3708
SYBEANIDR	19 JUL 2019	3642	3609	3626	3647	3664	3685
SYOREF	20 JUN 2019	761.2	758.2	759.7	760.8	762.3	763.3
SYOREF	19 JUL 2019	743.4	738.5	740.9	742.5	744.9	746.5
COCUDAKL	20 JUN 2019	2835	2835	2835	2835	2835	2835
COCUDAKL	19 JUL 2019	2842	2773	2808	2866	2901	2959
JEERAUNJHA	20 JUN 2019	17545	17455	17500	17560	17605	17665
JEERAUNJHA	19 JUL 2019	17405	17158	17282	17378	17502	17598
TMCFRGNZM	20 JUN 2019	6400	6264	6332	6442	6510	6620
TMCFRGNZM	19 JUL 2019	6352	6151	6251	6435	6535	6719
DHANIYA	19 JUL 2019	6896	6809	6852	6924	6967	7039
DHANIYA	20 JUN 2019	6886	6814	6850	6875	6911	6936
COTTON	31 JUL 2019	21960	21527	21743	21887	22103	22247
COTTON	28 JUN 2019	21890	21417	21653	21837	22073	22257

TEAM

ANALYST	DESIGNATION	EMAIL	TELEPHONE
Aditya Agarwal	Head – Technical Research	aditya@way2wealth.com	+9122-61462955
Harish Jujarey	Sr. Technical Analyst – Forex & Commodity	harishjujarey@way2wealth.com	+9122-61462952
Monil Shah, CMT	Sr. Technical Analyst – Equity & Forex	monilshah@way2wealth.com	+9122-61462980
Mohit Agarwal	Technical Analyst – Forex & Commodity	mohitk@way2wealth.com	+9122-61462954

Disclaimer

Analyst Certification: I, Mohit Agarwal, the research analyst and author of this report, hereby certify that the views expressed in this research report accurately reflect our personal views about the subject securities, issuers, products, sectors or industries. It is also certified that no part of the compensation of the analyst(s) was, is, or will be directly or indirectly related to the inclusion of specific recommendations or views in this research. The analyst(s), principally responsible for the preparation of this research report, receives compensation based on overall revenues of the company (Way2Wealth Brokers Private Limited, hereinafter referred to as Way2Wealth) and has taken reasonable care to achieve and maintain independence and objectivity in making any recommendations.

It is confirmed that Mohit Agarwal, the author of this report has not received any compensation from the companies mentioned in the report in the preceding 12 months. Our research professionals are paid in part based on the profitability of Way2Wealth, which include earnings from other business. Neither Way2Wealth nor its directors, employees, agents or representatives shall be liable for any damages whether direct or indirect, incidental, special or consequential including lost revenue or lost profits that may arise from or in connection with the use of the information contained in this report.

This report is for the personal information of the authorized recipient and does not construe to be any investment, legal or taxation advice to you. Way2Wealth is not soliciting any action based upon it. Nothing in this research shall be construed as a solicitation to buy or sell any security or product, or to engage in or refrain from engaging in any such transaction. The contents of this material are general and are neither comprehensive nor appropriate for every individual and are solely for the informational purposes of the readers. This material does not take into account the specific objectives, financial situation or needs of an individual/s or a Corporate/s or any entity/s.

This research has been prepared for the general use of the clients of the Way2Wealth and must not be copied, either in whole or in part, or distributed or redistributed to any other person in any form. If you are not the intended recipient you must not use or disclose the information in this research in any way. Though disseminated to all the customers simultaneously, not all customers may receive this report at the same time. Way2Wealth will not treat recipients as customers by virtue of their receiving this report. The distribution of this document in other jurisdictions may be restricted by the law applicable in the relevant jurisdictions and persons into whose possession this document comes should inform themselves about, and observe any such restrictions.

The report is based upon information obtained from sources believed to be reliable, but we do not make any representation or warranty that it is accurate, complete or up to date and it should not be relied upon as such. Way2Wealth or any of its affiliates or employees makes no warranties, either express or implied of any kind regarding any matter pertaining to this report, including, but not limited to warranties of suitability, fitness for a particular purpose, accuracy, timeliness, completeness or non-infringement. We accept no obligation to correct or update the information or opinions in it. Way2Wealth or any of its affiliates or employees shall not be in any way responsible for any loss or damage that may arise to any person from any inadvertent error in the information contained in this report. The recipients of this report should rely on their own investigations. In no event shall Way2Wealth be liable for any damages of any kind, including, but not limited to, indirect, special, incidental, consequential, punitive, lost profits, or lost opportunity, whether or not Way2Wealth has advised of the possibility of such damages.

This material contains statements that are forward-looking; such statements are based upon the current beliefs and expectations and are subject to significant risks and uncertainties. Actual results may differ from those set forth in the forward-looking statements. These uncertainties include but are not limited to: the risk of adverse movements or volatility in the securities markets or in interest or foreign exchange rates or indices; adverse impact from an economic slowdown; downturn in domestic or foreign securities and trading conditions or markets; increased competition; unfavourable political and diplomatic developments; change in the governmental or regulatory policies; failure of a corporate event and such others. This is not an offer to buy or sell or a solicitation of an offer to buy or sell any security or instrument or to participate in any particular trading strategy. No part of this material may be copied or duplicated in any form by any means or redistributed without the written consent of Way2Wealth. In no event shall any reader publish, retransmit, redistribute or otherwise reproduce any information provided by Way2Wealth in any format to anyone. Way2Wealth and its affiliates, officers, directors and employees including persons involved in the preparation or issuance of this report may from time to time have interest in securities / positions, financial or otherwise in the securities related to the information contained in this report.