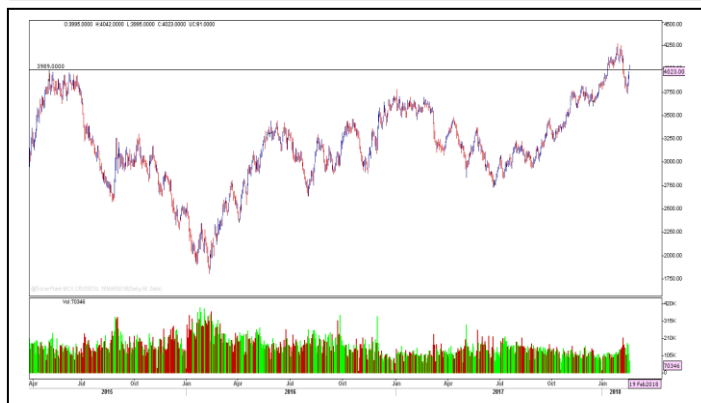


MCX CRUDE OIL MARCH



Technical Outlook

On Monday Crude oil prices opened with a gap up at 3995 and surged till 4042 and finally ended at 4023. The price has once again come up above the 2015 swing high and has settled above it. Hence, going forward the key immediate support is at 3989 and as long as it holds above that the bullish potential remains intact and expects the prices to extend till 4120 levels.

Action	Entry	Target	Stop
BUY	At 4010	4120	3960

MCX ALUMINIUM FEBRUARY



Technical Outlook

In the last two sessions aluminium prices have witnessed a sharp rise from the lows and during yesterday's session, it surged till the high of 144.05 and ended at 142.70. On the daily chart, it has penetrated the slanting trend line resistance, but it failed to make close above that. Hence, ahead if the prices managed to sustain above the trend line resistance of 143.50 then the price will once again turn to bullish and thus we recommend buying on break of 143.50 for upside targets of 146 then 148.

Action	Entry	Target	Stop
BUY	Above 143.50	146.50/148	141

NCDEX RM SEED APRIL



Technical Outlook

For the last few weeks, RM seed prices have been trading in a flag pattern and on Monday it once again penetrated the resistance of the flag and surged till 4210 and finally ended at 4179. The price has settled just above the flag pattern and ahead it manage to hold above that then a firm up move can be seen till 4250 then 4300 levels. Thus we advise buying above 4185 for upside targets of 4300 levels.

Action	Entry	Target	Stop
BUY	Above 4185	4300	4140

NCDEX GUAR SEED MARCH



Technical Outlook

On Monday, Guar seed prices witnessed the massive fall and ended almost near the day low at 4360. The price has already penetrated the rising trend line and currently the immediate key support is at 4344 and break down below that will extend the correction till 4190 then 4040 levels. Thus, for the day we recommend selling on break of 4340 for the day.

Action	Entry	Target	Stop
SELL	At 4340	4200/4050	4440

ECONOMIC DATA & EVENTS

TIME(IST)	COUNTRY	DATA & EVENTS	ACTUAL	FORECAST	PREVIOUS
-	-	-	-	-	-
-	-	-	-	-	-
-	-	-	-	-	-
-	-	-	-	-	-
-	-	-	-	-	-
-	-	-	-	-	-

DAILY PIVOT LEVELS

Symbol	Expiry	LTP	S2	S1	Pivot	R1	R2
GOLD	05 APR 2018	30736.0	30684.0	30710.0	30751.0	30777.0	30818.0
SILVER	05 MAR 2018	38568.0	38390.0	38479.0	38574.0	38663.0	38758.0
CRUDEOIL	19 MAR 2018	4039.0	3974.3	4006.7	4027.3	4059.7	4080.3
NATURALGAS	23 FEB 2018	165.2	162.1	163.6	166.6	168.1	171.1
COPPER	28 FEB 2018	457.3	451.5	454.4	458.3	461.2	465.1
NICKEL	28 FEB 2018	875.5	861.6	868.6	880.3	887.3	899.0
ALUMINIUM	28 FEB 2018	142.8	138.0	140.4	142.2	144.6	146.4
LEAD	28 FEB 2018	166.8	164.7	165.7	167.3	168.4	170.0
ZINC	28 FEB 2018	230.9	228.9	229.9	230.7	231.7	232.4
CPO	28 FEB 2018	581.0	575.7	578.3	579.7	582.3	583.7
MENTHAOIL	28 FEB 2018	1315.4	1279.1	1297.3	1333.5	1351.7	1387.9
COTTON	28 FEB 2018	19430.0	19283.3	19356.7	19473.3	19546.7	19663.3
COCUDAKL	20 FEB 2018	1669.0	1651.7	1660.3	1667.7	1676.3	1683.7
GUARGUM5	20 FEB 2018	9400.0	9279.3	9339.7	9460.3	9520.7	9641.3
GUARSEED10	20 FEB 2018	4373.0	4285.0	4329.0	4417.0	4461.0	4549.0
RMSEED	20 APR 2018	4142.0	4096.7	4119.3	4144.7	4167.3	4192.7
CASTOR	20 FEB 2018	4195.0	4175.0	4185.0	4205.0	4215.0	4235.0
SYBEANIDR	20 FEB 2018	3755.0	3693.0	3724.0	3776.0	3807.0	3859.0
SYOREF	20 FEB 2018	736.3	734.1	735.2	737.0	738.1	739.9
JEERAUNJHA	20 MAR 2018	15445.0	15181.7	15313.3	15576.7	15708.3	15971.7
TMCFGRNZM	20 APR 2018	7114.0	6995.3	7054.7	7173.3	7232.7	7351.3

TEAM

ANALYST	DESIGNATION	EMAIL	TELEPHONE
Aditya Agarwal	Head – Technical Research	aditya@way2wealth.com	+91 22-61462955
Harish Jujarey	Sr. Technical Analyst – Commodity	harishjujarey@way2wealth.com	+91 22-61462952
Mohit Agarwal	Technical Analyst – Forex & Commodity	mohitk@way2wealth.com	+91 22-61462954
Monil Shah, CMT	Technical Analyst – Equity & Forex	monilshah@way2wealth.com	+91 22-61462980

Disclaimer

Analyst Certification: I, Harish jujarey, the research analyst and author of this report, hereby certify that the views expressed in this research report accurately reflect our personal views about the subject securities, issuers, products, sectors or industries. It is also certified that no part of the compensation of the analyst(s) was, is, or will be directly or indirectly related to the inclusion of specific recommendations or views in this research. The analyst(s), principally responsible for the preparation of this research report, receives compensation based on overall revenues of the company (Way2Wealth Brokers Private Limited, hereinafter referred to as Way2Wealth) and has taken reasonable care to achieve and maintain independence and objectivity in making any recommendations.

It is confirmed that Harish Jujarey, the author of this report has not received any compensation from the companies mentioned in the report in the preceding 12 months. Our research professionals are paid in part based on the profitability of Way2Wealth, which include earnings from other business. Neither Way2Wealth nor its directors, employees, agents or representatives shall be liable for any damages whether direct or indirect, incidental, special or consequential including lost revenue or lost profits that may arise from or in connection with the use of the information contained in this report.

This report is for the personal information of the authorized recipient and does not construe to be any investment, legal or taxation advice to you. Way2Wealth is not soliciting any action based upon it. Nothing in this research shall be construed as a solicitation to buy or sell any security or product, or to engage in or refrain from engaging in any such transaction. The contents of this material are general and are neither comprehensive nor appropriate for every individual and are solely for the informational purposes of the readers. This material does not take into account the specific objectives, financial situation or needs of an individual/s or a Corporate/s or any entity/s.

This research has been prepared for the general use of the clients of the Way2Wealth and must not be copied, either in whole or in part, or distributed or redistributed to any other person in any form. If you are not the intended recipient you must not use or disclose the information in this research in any way. Though disseminated to all the customers simultaneously, not all customers may receive this report at the same time. Way2Wealth will not treat recipients as customers by virtue of their receiving this report. The distribution of this document in other jurisdictions may be restricted by the law applicable in the relevant jurisdictions and persons into whose possession this document comes should inform themselves about, and observe any such restrictions.

The report is based upon information obtained from sources believed to be reliable, but we do not make any representation or warranty that it is accurate, complete or up to date and it should not be relied upon as such. Way2Wealth or any of its affiliates or employees makes no warranties, either express or implied of any kind regarding any matter pertaining to this report, including, but not limited to warranties of suitability, fitness for a particular purpose, accuracy, timeliness, completeness or non-infringement. We accept no obligation to correct or update the information or opinions in it. Way2Wealth or any of its affiliates or employees shall not be in any way responsible for any loss or damage that may arise to any person from any inadvertent error in the information contained in this report. The recipients of this report should rely on their own investigations. In no event shall Way2Wealth be liable for any damages of any kind, including, but not limited to, indirect, special, incidental, consequential, punitive, lost profits, or lost opportunity, whether or not Way2Wealth has advised of the possibility of such damages.

This material contains statements that are forward-looking; such statements are based upon the current beliefs and expectations and are subject to significant risks and uncertainties. Actual results may differ from those set forth in the forward-looking statements. These uncertainties include but are not limited to: the risk of adverse movements or volatility in the securities markets or in interest or foreign exchange rates or indices; adverse impact from an economic slowdown; downturn in domestic or foreign securities and trading conditions or markets; increased competition; unfavourable political and diplomatic developments; change in the governmental or regulatory policies; failure of a corporate event and such others. This is not an offer to buy or sell or a solicitation of an offer to buy or sell any security or instrument or to participate in any particular trading strategy. No part of this material may be copied or duplicated in any form by any means or redistributed without the written consent of Way2Wealth. In no event shall any reader publish, retransmit, redistribute or otherwise reproduce any information provided by Way2Wealth in any format to anyone. Way2Wealth and its affiliates, officers, directors and employees including persons involved in the preparation or issuance of this report may from time to time have interest in securities / positions, financial or otherwise in the securities related to the information contained in this report.