

SENSEX	34010.76 (-0.84%)
NIFTY	10452.30 (-0.88%)

Sector Indices	Close	% Change
NIFTY AUTO	11115	-1.70
NIFTY BANK	25164	-1.02
NIFTY ENERGY	13801	-1.2
NIFTY FMCG	26599	-0.5
NIFTY IT	12438	-0.15
NIFTY METAL	3992	-1.5
NIFTY MIDCAP 50	5131	-1.33
NIFTY PHARMA	9181	-0.29
NIFTY PSU BANK	3189	-2.49
NIFTY REALTY	327	-1.24

Key Levels - Nifty

Support	10360 / 10270
Resistance	10540 / 10630

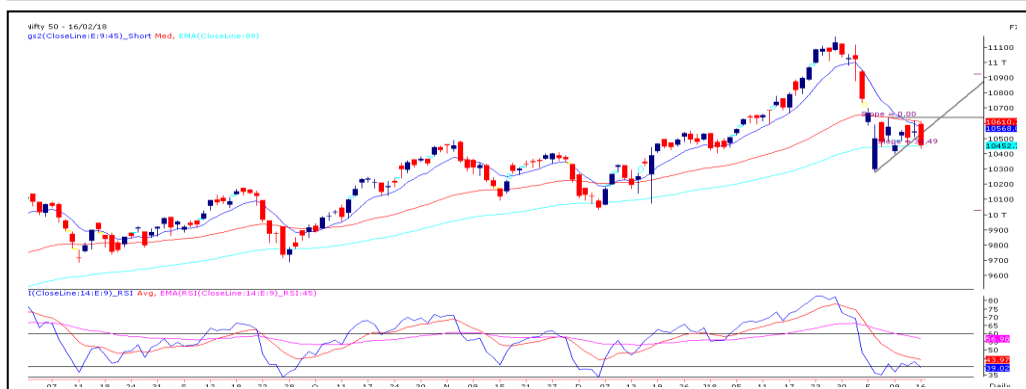
FII & DII Activities (Fig. in Cr)

Date	FII	DII
16-Feb-18	-1065.99	1127.78
15-Feb-18	-240.29	49.92
14-Feb-18	-728.71	-152.39
12-Feb-18	-814.11	1342.70
09-Feb-18	-1351.70	588.42
08-Feb-18	-2297.09	2373.59
07-Feb-18	-1022.50	461.19
06-Feb-18	-2326.10	1699.74
05-Feb-18	-1263.57	1163.64
02-Feb-18	950.00	-508.78

Key Levels - Bank Nifty

Support	25024 / 24800
Resistance	25415 / 25665

Nifty Spot Chart



Technical Outlook

Despite the gap up opening, the unsure bulls failed to continue the momentum going on Friday and eventually ended well inside the negative territory. Right from the beginning, Nifty remained under tremendous pressure and erased all its gains. Subsequently, the sell-off accelerated during the second half. In the process, Nifty concluded the session below 10500. For the third consecutive times, the daily 45-EMA proved its significance as index reversed sharply from said levels. At this juncture, the daily chart has signalled bullish divergence pattern. For the day, 10360 / 10270 are intraday support whereas 10540 / 10630 are near term hurdle.

Bank Nifty Spot Chart



Technical Outlook

The Nifty Bank index too opened higher in-line with the benchmark indices however it gradually descended and eventually ended inside the negative territory. At this juncture, index is approaching towards the recent swing low of 25024 which will act as a strong support as this level also coincided with the 61.8% Fibonacci retracement of its entire move the bottom of 23611 to the top of 27652. Any sustain move below this level will drag index lower towards 24600. On the other side, 25415 / 25665 are near term resistance.

Stocks For Today

Name	Entry	Target	Stop loss
IPCALAB	Buy Around 624	646	611
DALMIABHA	Sell Around 2810	2680	2866
AMBUJACEM	Buy At cmp 257.05	266	253

Daily Pivot Levels For Nifty 50 Stocks

Scrip Name	Support 2	Support 1	Pivot	Resist 1	Resist 2
ADANI PORTS	394.55	400.00	407.80	413.25	421.05
AMBUJACEM	250.42	253.73	257.62	260.93	264.82
ASIANPAINT	1 123.28	1 133.57	1 140.28	1 150.57	1 157.28
AUROPHARMA	579.60	584.45	591.10	595.95	602.60
AXISBANK	527.18	532.97	540.78	546.57	554.38
BAJAJ-AUTO	3 056.70	3 080.30	3 119.15	3 142.75	3 181.60
BAJFINANCE	1 651.18	1 663.22	1 683.58	1 695.62	1 715.98
BHARTIARTL	407.80	413.75	424.35	430.30	440.90
BOSCHLTD	19 422.67	19 483.83	19 561.92	19 623.08	19 701.17
BPCL	456.73	461.22	469.48	473.97	482.23
CIPLA	601.73	606.42	610.18	614.87	618.63
COALINDIA	297.67	300.58	305.52	308.43	313.37
DRREDDY	2 187.18	2 200.37	2 220.18	2 233.37	2 253.18
EICHERMOT	26 392.63	26 908.22	27 666.58	28 182.17	28 940.53
GAIL	458.23	463.27	471.18	476.22	484.13
HCLTECH	906.40	921.75	946.35	961.70	986.30
HDFC	1 786.13	1 800.82	1 818.88	1 833.57	1 851.63
HDFCBANK	1 863.83	1 871.22	1 883.03	1 890.42	1 902.23
HEROMOTOCO	3 444.87	3 469.53	3 509.67	3 534.33	3 574.47
HINDALCO	239.78	243.72	250.33	254.27	260.88
HINDPETRO	380.98	383.97	389.18	392.17	397.38
HINDUNILVR	1 338.70	1 345.40	1 354.70	1 361.40	1 370.70
IBULHSGFIN	1 224.52	1 248.43	1 288.92	1 312.83	1 353.32
ICICIBANK	309.65	315.70	324.85	330.90	340.05
INDUSINDBK	1 619.23	1 635.22	1 665.98	1 681.97	1 712.73
INFRATEL	316.32	321.93	328.17	333.78	340.02
INFY	1 104.72	1 114.88	1 128.27	1 138.43	1 151.82
IOC	371.35	373.20	376.35	378.20	381.35
ITC	262.35	264.25	267.50	269.40	272.65
KOTAKBANK	1 029.87	1 040.03	1 051.02	1 061.18	1 072.17
LT	1 294.07	1 311.23	1 337.62	1 354.78	1 381.17
LUPIN	816.77	820.93	825.37	829.53	833.97
M&M	734.33	738.42	746.08	750.17	757.83
MARUTI	8 643.80	8 743.90	8 906.95	9 007.05	9 170.10
NTPC	161.13	161.97	162.88	163.72	164.63
ONGC	184.75	185.80	187.55	188.60	190.35
POWERGRID	192.68	194.12	196.18	197.62	199.68
RELIANCE	902.83	912.07	927.33	936.57	951.83
SBIN	263.15	267.40	274.30	278.55	285.45
SUNPHARMA	557.77	566.38	571.97	580.58	586.17
TATAMOTORS	360.78	365.77	372.58	377.57	384.38
TATASTEEL	667.80	677.90	693.70	703.80	719.60
TCS	2 875.28	2 904.17	2 951.88	2 980.77	3 028.48
TECHM	560.58	572.47	593.08	604.97	625.58
ULTRACEMCO	4 070.67	4 112.93	4 186.42	4 228.68	4 302.17
UPL	685.17	695.13	710.07	720.03	734.97
VEDL	308.07	314.03	321.97	327.93	335.87
WIPRO	286.63	289.07	292.48	294.92	298.33
YESBANK	300.20	306.10	315.55	321.45	330.90
ZEEL	555.60	561.60	571.55	577.55	587.50

TEAM

ANALYST	DESIGNATION	EMAIL	TELEPHONE
Aditya Agarwal	Head – Technical Research	aditya@way2wealth.com	+91 22-61462955
Monil Shah, CMT	Sr. Technical Analyst – Equity & Forex	monilshah@way2wealth.com	+91 22-61462980
Harish Jujarey	Sr. Technical Analyst – Commodity	harishjujarey@way2wealth.com	+91 22-61462952
Mohit Agarwal	Technical Analyst – Forex & Commodity	mohitk@way2wealth.com	+91 22-61462954

Disclaimer

Analyst Certification: I, Monil Shah, CMT the research analyst and author of this report, hereby certify that the views expressed in this research report accurately reflect our personal views about the subject securities, issuers, products, sectors or industries. It is also certified that no part of the compensation of the analyst(s) was, is, or will be directly or indirectly related to the inclusion of specific recommendations or views in this research. The analyst(s), principally responsible for the preparation of this research report, receives compensation based on overall revenues of the company (Way2Wealth Brokers Private Limited, hereinafter referred to as Way2Wealth) and has taken reasonable care to achieve and maintain independence and objectivity in making any recommendations.

It is confirmed that Monil Shah, CMT the author of this report has not received any compensation from the companies mentioned in the report in the preceding 12 months. Our research professionals are paid in part based on the profitability of Way2Wealth, which include earnings from other business. Neither Way2Wealth nor its directors, employees, agents or representatives shall be liable for any damages whether direct or indirect, incidental, special or consequential including lost revenue or lost profits that may arise from or in connection with the use of the information contained in this report.

This report is for the personal information of the authorized recipient and does not construe to be any investment, legal or taxation advice to you. Way2Wealth is not soliciting any action based upon it. Nothing in this research shall be construed as a solicitation to buy or sell any security or product, or to engage in or refrain from engaging in any such transaction. The contents of this material are general and are neither comprehensive nor appropriate for every individual and are solely for the informational purposes of the readers. This material does not take into account the specific objectives, financial situation or needs of an individual/s or a Corporate/s or any entity/s.

This research has been prepared for the general use of the clients of the Way2Wealth and must not be copied, either in whole or in part, or distributed or redistributed to any other person in any form. If you are not the intended recipient you must not use or disclose the information in this research in any way. Though disseminated to all the customers simultaneously, not all customers may receive this report at the same time. Way2Wealth will not treat recipients as customers by virtue of their receiving this report. The distribution of this document in other jurisdictions may be restricted by the law applicable in the relevant jurisdictions and persons into whose possession this document comes should inform themselves about, and observe any such restrictions.

The report is based upon information obtained from sources believed to be reliable, but we do not make any representation or warranty that it is accurate, complete or up to date and it should not be relied upon as such. Way2Wealth or any of its affiliates or employees makes no warranties, either express or implied of any kind regarding any matter pertaining to this report, including, but not limited to warranties of suitability, fitness for a particular purpose, accuracy, timeliness, completeness or non-infringement. We accept no obligation to correct or update the information or opinions in it. Way2Wealth or any of its affiliates or employees shall not be in any way responsible for any loss or damage that may arise to any person from any inadvertent error in the information contained in this report. The recipients of this report should rely on their own investigations. In no event shall Way2Wealth be liable for any damages of any kind, including, but not limited to, indirect, special, incidental, consequential, punitive, lost profits, or lost opportunity, whether or not Way2Wealth has advised of the possibility of such damages.

This material contains statements that are forward-looking; such statements are based upon the current beliefs and expectations and are subject to significant risks and uncertainties. Actual results may differ from those set forth in the forward-looking statements. These uncertainties include but are not limited to: the risk of adverse movements or volatility in the securities markets or in interest or foreign exchange rates or indices; adverse impact from an economic slowdown; downturn in domestic or foreign securities and trading conditions or markets; increased competition; unfavorable political and diplomatic developments; change in the governmental or regulatory policies; failure of a corporate event and such others. This is not an offer to buy or sell or a solicitation of an offer to buy or sell any security or instrument or to participate in any particular trading strategy. No part of this material may be copied or duplicated in any form by any means or redistributed without the written consent of Way2Wealth. In no event shall any reader publish, retransmit, redistribute or otherwise reproduce any information provided by Way2Wealth in any format to anyone. Way2Wealth and its affiliates, officers, directors and employees including persons involved in the preparation or issuance of this report may from time to time have interest in securities / positions, financial or otherwise in the securities related to the information contained in this report.