

SENSEX	35352.61 (-0.41%)
NIFTY	10604.35 (-0.34%)

Sector Indices	Close	% Change
NIFTY AUTO	8073	0.07
NIFTY BANK	26685	0.11
NIFTY ENERGY	14411	-0.16
NIFTY FMCG	29010	0.15
NIFTY IT	15334	-2.08
NIFTY METAL	2690	1.42
NIFTY MIDCAP 50	4429	0.54
NIFTY PHARMA	8553	-0.25
NIFTY PSU BANK	2696	1.33
NIFTY REALTY	228	1.72

### Key Levels - Nifty

Support	10575 / 10510
Resistance	10675 / 10740

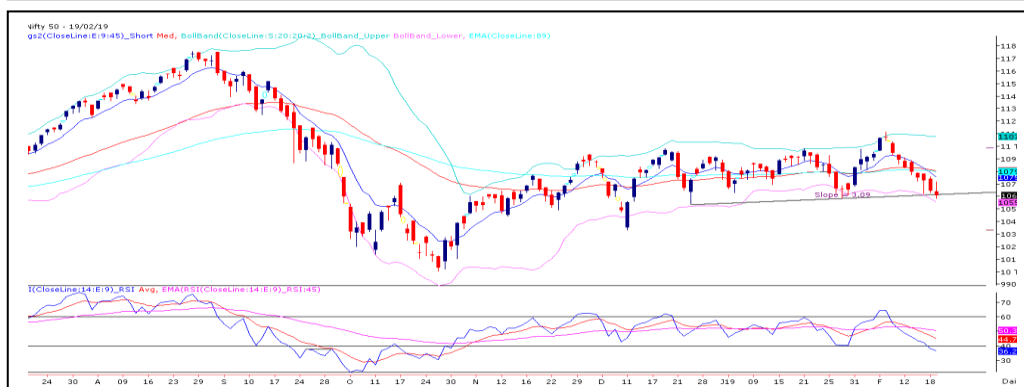
### FII & DII Activities (Fig. in Cr)

Date	FII	DII
19-Feb-19	-813.76	1163.85
18-Feb-19	-1239.79	2336.74
15-Feb-19	-966.43	853.25
14-Feb-19	-250.23	1225.24
13-Feb-19	-676.63	713.10
12-Feb-19	-466.78	-122.64
11-Feb-19	-125.05	-232.55
08-Feb-19	843.73	-960.04
07-Feb-19	418.01	294.11
06-Feb-19	694.97	525.26

### Key Levels - Bank Nifty

Support	26440 / 26215
Resistance	26870 / 27030

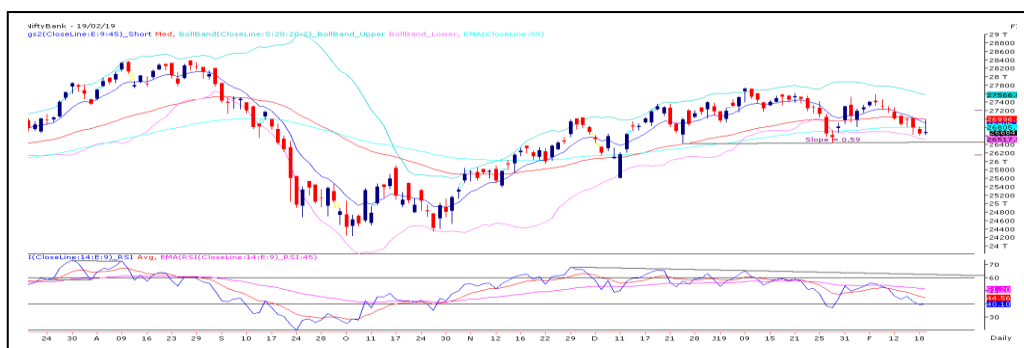
### Nifty Spot Chart



### Technical Outlook

Yesterday the bear use early morning rally to enter the market and put tremendous pressure on index. As a result, nifty fell more than a percent from its intraday high of 10722.85 and ended well inside the negative territory. Due to sharp sell-off in the second half, nifty confirmed its breakdown from Descending triangle formed on hourly chart. And, the conservative target of said pattern comes near 10450. Also, nifty penetrated the upward sloping trend line drawn on daily chart by joining its swing lows. Going forward, 10535 – 10455 are near term support on nifty whereas resistance seen at 10675 – 10740 levels respectively.

### Bank Nifty Spot Chart



### Technical Outlook

The Nifty Bank showed tremendous resilience during the first and made valiant attempt to rally higher. However, the bullish momentum exhausted near the 27000 mark and index took sharp U-turn. This had a rub-off effect as index erased all its intraday gains and eventually ended near its opening tick. Looking at the daily chart, yesterday's high precisely coincided with the daily 45-EMA which poised to signal negative crossover with daily 9-EMA. At this juncture, 26500 – 26440 zone will be a strong support zone and any break below 26440 will confirm its break down from head & shoulder pattern. Higher side, 27030 will be a stiff resistance.

### Stocks For Today

Name	Entry	Target	Stop loss
M&M	Buy Around 630	657	615
PIDILITIND	Sell Around 1060	1027	1075.50
HDFC	Sell Around 1855	1825	1876

DailyPivotLevelsForNifty50Stocks					
ScripName	Support2	Support 1	Pivot	Resist 1	Resist2
ADANI PORTS	330.9	335.2	341.9	346.2	352.8
ASIAN PAINT	1356.0	1366.9	1381.9	1392.9	1407.9
AXIS BANK	680.3	686.7	696.0	702.4	711.8
BAJAJ-AUTO	2751.2	2772.3	2798.7	2819.8	2846.2
BAJAJ FINSV	5786.4	5878.1	5954.0	6045.7	6121.7
BAJ FINANCE	2508.6	2534.2	2570.6	2596.2	2632.5
BHARTIARTL	294.3	299.0	306.3	311.0	318.2
BPCL	320.0	327.6	333.2	340.9	346.5
CIPLA	532.2	535.9	540.5	544.2	548.7
COALINDIA	210.2	212.2	215.6	217.6	221.0
DRREDDY	2445.8	2491.3	2550.7	2596.2	2655.6
EICHER MOT	19903.4	20029.3	20246.9	20372.8	20590.5
GAIL	311.5	315.9	320.8	325.2	330.1
GRASIM	686.4	702.4	713.2	729.2	740.0
HCLTECH	1027.4	1033.2	1042.2	1048.1	1057.1
HDFC	1817.8	1835.6	1862.1	1879.9	1906.3
HDFC BANK	2060.2	2072.1	2090.1	2102.1	2120.1
HEROMOTOCO	2575.4	2606.1	2659.7	2690.4	2744.0
HINDALCO	181.5	184.0	186.6	189.2	191.8
HINDPETRO	208.5	211.7	214.7	217.8	220.8
HINDUNILVR	1713.5	1725.7	1742.7	1754.9	1771.8
IBULHSGFIN	599.4	606.8	616.7	624.2	634.1
ICICIBANK	333.0	338.1	344.3	349.4	355.6
INDUSINDBK	1441.0	1460.8	1490.8	1510.6	1540.6
INFRA TEL	309.6	314.0	319.4	323.9	329.3
INFY	709.5	716.9	728.7	736.1	748.0
IOC	123.1	124.4	126.3	127.5	129.4
ITC	271.2	273.5	276.4	278.7	281.6
JSW STEEL	255.8	261.3	266.5	272.1	277.3
KOTAK BANK	1265.8	1273.1	1279.2	1286.5	1292.6
LT	1232.8	1245.5	1257.8	1270.5	1282.8
M&M	616.5	624.6	633.3	641.3	650.0
MARUTI	6685.6	6745.1	6830.5	6890.0	6975.4
NTPC	129.2	131.5	134.7	136.9	140.1
ONGC	135.8	137.5	138.9	140.6	142.1
POWERGRID	176.4	177.9	180.5	182.0	184.6
RELIANCE	1193.8	1205.0	1222.3	1233.5	1250.8
SBIN	256.4	259.6	263.6	266.8	270.8
SUNPHARMA	406.1	409.9	416.1	419.9	426.2
TATAMOTORS	159.4	161.6	163.8	166.0	168.2
TATA STEEL	457.1	464.0	472.3	479.2	487.5
TCS	1843.6	1874.2	1922.6	1953.2	2001.6
TECHM	776.1	783.6	796.3	803.7	816.4
TITAN	1010.1	1019.5	1034.6	1044.0	1059.1
ULTRACEMCO	3366.1	3416.9	3460.9	3511.7	3555.7
UPL	805.2	810.8	817.6	823.3	830.1
VEDL	145.2	149.2	151.8	155.7	158.3
WIPRO	353.8	358.6	367.0	371.8	380.2
YES BANK	207.6	210.2	214.2	216.8	220.7
ZEEL	425.5	436.0	443.5	454.0	461.5

### TEAM

ANALYST	DESIGNATION	EMAIL	TELEPHONE
Aditya Agarwal	Head – Technical Research	<a href="mailto:aditya@way2wealth.com">aditya@way2wealth.com</a>	+91 22-61462955
Monil Shah, CMT	Sr. Technical Analyst – Equity & Forex	<a href="mailto:monilshah@way2wealth.com">monilshah@way2wealth.com</a>	+91 22-61462980
Harish Jujarey	Sr. Technical Analyst – Commodity	<a href="mailto:harishjujarey@way2wealth.com">harishjujarey@way2wealth.com</a>	+91 22-61462952
Mohit Agarwal	Technical Analyst – Forex & Commodity	<a href="mailto:mohitk@way2wealth.com">mohitk@way2wealth.com</a>	+91 22-61462954

### Disclaimer

**Analyst Certification:** I, Monil Shah, CMT the research analyst and author of this report, hereby certify that the views expressed in this research report accurately reflect our personal views about the subject securities, issuers, products, sectors or industries. It is also certified that no part of the compensation of the analyst(s) was, is, or will be directly or indirectly related to the inclusion of specific recommendations or views in this research. The analyst(s), principally responsible for the preparation of this research report, receives compensation based on overall revenues of the company (Way2Wealth Brokers Private Limited, hereinafter referred to as Way2Wealth) and has taken reasonable care to achieve and maintain independence and objectivity in making any recommendations.

It is confirmed that Monil Shah, CMT the author of this report has not received any compensation from the companies mentioned in the report in the preceding 12 months. Our research professionals are paid in part based on the profitability of Way2Wealth, which include earnings from other business. Neither Way2Wealth nor its directors, employees, agents or representatives shall be liable for any damages whether direct or indirect, incidental, special or consequential including lost revenue or lost profits that may arise from or in connection with the use of the information contained in this report.

This report is for the personal information of the authorized recipient and does not construe to be any investment, legal or taxation advice to you. Way2Wealth is not soliciting any action based upon it. Nothing in this research shall be construed as a solicitation to buy or sell any security or product, or to engage in or refrain from engaging in any such transaction. The contents of this material are general and are neither comprehensive nor appropriate for every individual and are solely for the informational purposes of the readers. This material does not take into account the specific objectives, financial situation or needs of an individual/s or a Corporate/s or any entity/s.

This research has been prepared for the general use of the clients of the Way2Wealth and must not be copied, either in whole or in part, or distributed or redistributed to any other person in any form. If you are not the intended recipient you must not use or disclose the information in this research in any way. Though disseminated to all the customers simultaneously, not all customers may receive this report at the same time. Way2Wealth will not treat recipients as customers by virtue of their receiving this report. The distribution of this document in other jurisdictions may be restricted by the law applicable in the relevant jurisdictions and persons into whose possession this document comes should inform themselves about, and observe any such restrictions.

The report is based upon information obtained from sources believed to be reliable, but we do not make any representation or warranty that it is accurate, complete or up to date and it should not be relied upon as such. Way2Wealth or any of its affiliates or employees makes no warranties, either express or implied of any kind regarding any matter pertaining to this report, including, but not limited to warranties of suitability, fitness for a particular purpose, accuracy, timeliness, completeness or non-infringement. We accept no obligation to correct or update the information or opinions in it. Way2Wealth or any of its affiliates or employees shall not be in any way responsible for any loss or damage that may arise to any person from any inadvertent error in the information contained in this report. The recipients of this report should rely on their own investigations. In no event shall Way2Wealth be liable for any damages of any kind, including, but not limited to, indirect, special, incidental, consequential, punitive, lost profits, or lost opportunity, whether or not Way2Wealth has advised of the possibility of such damages.

This material contains statements that are forward-looking; such statements are based upon the current beliefs and expectations and are subject to significant risks and uncertainties. Actual results may differ from those set forth in the forward-looking statements. These uncertainties include but are not limited to: the risk of adverse movements or volatility in the securities markets or in interest or foreign exchange rates or indices; adverse impact from an economic slowdown; downturn in domestic or foreign securities and trading conditions or markets; increased competition; unfavourable political and diplomatic developments; change in the governmental or regulatory policies; failure of a corporate event and such others. This is not an offer to buy or sell or a solicitation of an offer to buy or sell any security or instrument or to participate in any particular trading strategy. No part of this material may be copied or duplicated in any form by any means or redistributed without the written consent of Way2Wealth. In no event shall any reader publish, retransmit, redistribute or otherwise reproduce any information provided by Way2Wealth in any format to anyone. Way2Wealth and its affiliates, officers, directors and employees including persons involved in the preparation or issuance of this report may from time to time have interest in securities / positions, financial or otherwise in the securities related to the information contained in this report.