

MCX NICKEL FEB



- Nickel prices opened slightly higher in the last session and prices rose strongly further for most of the session till high of 899.50.
- Prices have been rising gradually since last few sessions after retesting and taking strong support at its short term declining trend line break out level in the last week.
- Prices are expected to rise further from these levels towards immediate strong resistance placed around 918 level.
- On the lower side, immediate supports are placed around 885 and 858 levels. Buying on minor pullbacks is recommended in Nickel for the day.

Today's Actionable

Commodity	Expiry	Action	Entry	Target	Stop loss
Nickel	Feb	Buy	Around 885	918	858
Silver	Mar	Buy	Around 40300	41000	39900
Guar seed	Mar	Sell	Around 4230	4170	4270

MCX

Commodity	Expiry	Close (Rs)	Change	% Change
GOLD	05 APR 2019	33899	291	0.87
SILVER	05 MAR 2019	40557	387	0.96
COPPER	28 FEB 2019	452.5	4.75	1.06
CRUDEOIL	19 FEB 2019	4003	-8	-0.2
ZINC	28 FEB 2019	191.5	1.5	0.79
LEAD	28 FEB 2019	143.4	-1.2	-0.83
ALUMINIUM	28 FEB 2019	130.85	0.05	0.04
NICKEL	28 FEB 2019	898.6	12.1	1.36
NATURALGAS	25 FEB 2019	189.4	1.6	0.85
MENTHAOIL	28 FEB 2019	1652.5	-19.5	-1.17

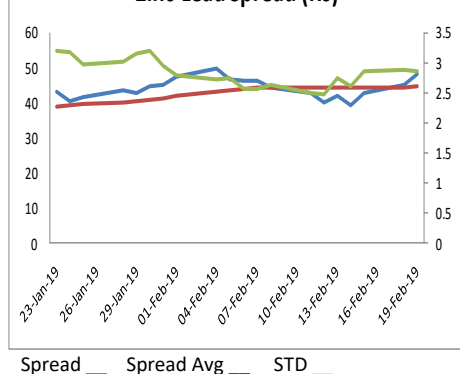
NCDEX

Commodity	Expiry	Close (Rs)	Change	% Change
GUARGUM5	20 FEB 2019	8304	-41	-0.49
GUARSEED10	20 FEB 2019	4180	-40.5	-0.96
CHANA	19 MAR 2019	4274	13	0.31
CASTOR	20 FEB 2019	5224	0	0
RMSEED	20 FEB 2019	3855	-2	-0.05
SYBEANIDR	20 FEB 2019	3786	53	1.42
SYOREF	20 FEB 2019	783.3	0.5	0.06
JEERAUNJHA	19 MAR 2019	15690	30	0.19
TMCGRNZM	16 APR 2019	6248	-4	-0.06
COCUDAKL	20 FEB 2019	1944	-19.5	-0.99

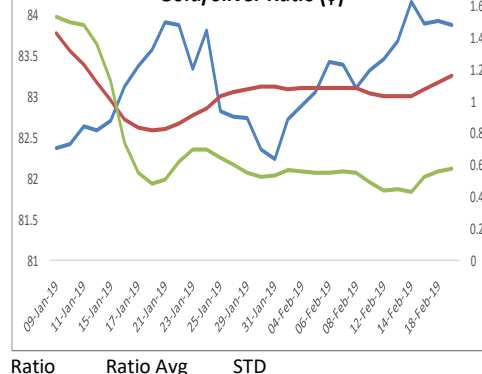
GLOBAL

Exchange	Commodity	Close (\$)	Change	% Change
Comex	Gold	1343.85	21.75	1.65%
Comex	Silver	15.963	0.22	1.40%
Nymex	Crude Oil WTI	56.3	0.32	0.57%
ICE	Brent Oil	66.12	-0.38	-0.57%
Nymex	Natural Gas	2.654	0.029	1.10%
LME	Copper	6328.75	65.5	1.05%
LME	Lead	2021.25	-10	-0.49%
LME	Zinc	2664.5	21.75	0.82%
LME	Aluminium	1854.5	0.75	0.04%
LME	Nickel	12650	185	1.48%

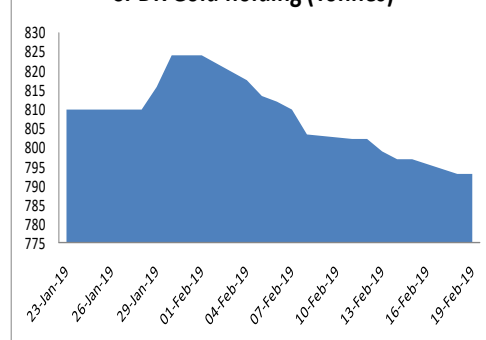
Zinc-Lead Spread (Rs)



Gold/Silver Ratio (\$)



SPDR Gold holding (Tonnes)



ECONOMIC DATA & EVENTS					
TIME(IST)	COUNTRY	DATA & EVENTS	ACTUAL	FORECAST	PREVIOUS
-	-	-	-	-	-
-	-	-	-	-	-
-	-	-	-	-	-
-	-	-	-	-	-
-	-	-	-	-	-
-	-	-	-	-	-
-	-	-	-	-	-

DAILY PIVOT LEVELS							
Symbol	Expiry	LTP	S2	S1	Pivot	R1	R2
GOLD	05 APR 2019	33899	33462	33681	33799	34018	34136
SILVER	05 MAR 2019	40557	39996	40277	40431	40712	40866
COPPER	28 FEB 2019	452.5	443.4	448.0	450.4	455.0	457.4
CRUDEOIL	19 FEB 2019	4003	3923	3963	3991	4031	4059
ZINC	28 FEB 2019	191.5	188.2	189.9	190.8	192.5	193.4
LEAD	28 FEB 2019	143.4	141.6	142.5	144.0	144.9	146.5
ALUMINIUM	28 FEB 2019	130.9	129.3	130.1	131.3	132.1	133.3
NICKEL	28 FEB 2019	898.6	879.2	888.9	894.2	903.9	909.2
NATURALGAS	25 FEB 2019	189.4	184.7	187.0	189.0	191.3	193.3
MENTHAOIL	28 FEB 2019	1652.5	1632.5	1642.5	1659.2	1669.2	1685.9
GUARGUM5	20 FEB 2019	8304	8295	8299	8305	8309	8315
GUARGUM5	19 MAR 2019	8362	8231	8297	8386	8452	8541
GUARSEED10	20 FEB 2019	4180	4175	4177	4180	4182	4185
GUARSEED10	19 MAR 2019	4222	4169	4195	4231	4257	4293
CHANA	19 MAR 2019	4274	4241	4257	4274	4290	4307
CHANA	16 APR 2019	4303	4269	4286	4302	4319	4335
CASTOR	20 FEB 2019	5224	5208	5216	5208	5216	5208
CASTOR	19 MAR 2019	5258	5214	5236	5258	5280	5302
RMSEED	20 FEB 2019	3855	3855	3855	3855	3855	3855
RMSEED	16 APR 2019	3922	3883	3902	3918	3937	3953
SYBEANIDR	20 FEB 2019	3786	3747	3767	3780	3800	3813
SYBEANIDR	19 MAR 2019	3796	3757	3777	3797	3817	3837
SYOREF	20 FEB 2019	783.3	781.9	782.6	783.3	784.0	784.7
SYOREF	19 MAR 2019	770.2	766.2	768.2	771.1	773.1	775.9
COCUDAKL	20 FEB 2019	1944	1944	1944	1944	1944	1944
COCUDAKL	19 MAR 2019	1957	1929	1943	1965	1979	2002
JEERAUNJHA	19 MAR 2019	15690	15537	15613	15687	15763	15837
JEERAUNJHA	16 APR 2019	15335	15225	15280	15345	15400	15465
TMCFGRNZM	16 APR 2019	6248	6201	6225	6257	6281	6313
TMCFGRNZM	20 MAY 2019	6350	6279	6315	6341	6377	6403
DHANIYA	20 MAY 2019	6299	6242	6271	6303	6332	6364
DHANIYA	16 APR 2019	6215	6157	6186	6229	6258	6301
COTTON	29 MAR 2019	20390	20297	20343	20407	20453	20517
COTTON	28 FEB 2019	20110	19917	20013	20157	20253	20397

TEAM

ANALYST	DESIGNATION	EMAIL	TELEPHONE
Aditya Agarwal	Head – Technical Research	aditya@way2wealth.com	+91 22-61462955
Harish Jujarey	Sr. Technical Analyst – Forex & Commodity	harishjujarey@way2wealth.com	+91 22-61462952
Mohit Agarwal	Technical Analyst – Forex & Commodity	mohitk@way2wealth.com	+91 22-61462954
Monil Shah, CMT	Technical Analyst – Equity & Forex	monilshah@way2wealth.com	+91 22-61462980

Disclaimer

Analyst Certification: I, Mohit Agarwal, the research analyst and author of this report, hereby certify that the views expressed in this research report accurately reflect our personal views about the subject securities, issuers, products, sectors or industries. It is also certified that no part of the compensation of the analyst(s) was, is, or will be directly or indirectly related to the inclusion of specific recommendations or views in this research. The analyst(s), principally responsible for the preparation of this research report, receives compensation based on overall revenues of the company (Way2Wealth Brokers Private Limited, hereinafter referred to as Way2Wealth) and has taken reasonable care to achieve and maintain independence and objectivity in making any recommendations.

It is confirmed that Mohit Agarwal, the author of this report has not received any compensation from the companies mentioned in the report in the preceding 12 months. Our research professionals are paid in part based on the profitability of Way2Wealth, which include earnings from other business. Neither Way2Wealth nor its directors, employees, agents or representatives shall be liable for any damages whether direct or indirect, incidental, special or consequential including lost revenue or lost profits that may arise from or in connection with the use of the information contained in this report.

This report is for the personal information of the authorized recipient and does not construe to be any investment, legal or taxation advice to you. Way2Wealth is not soliciting any action based upon it. Nothing in this research shall be construed as a solicitation to buy or sell any security or product, or to engage in or refrain from engaging in any such transaction. The contents of this material are general and are neither comprehensive nor appropriate for every individual and are solely for the informational purposes of the readers. This material does not take into account the specific objectives, financial situation or needs of an individual/s or a Corporate/s or any entity/s.

This research has been prepared for the general use of the clients of the Way2Wealth and must not be copied, either in whole or in part, or distributed or redistributed to any other person in any form. If you are not the intended recipient you must not use or disclose the information in this research in any way. Though disseminated to all the customers simultaneously, not all customers may receive this report at the same time. Way2Wealth will not treat recipients as customers by virtue of their receiving this report. The distribution of this document in other jurisdictions may be restricted by the law applicable in the relevant jurisdictions and persons into whose possession this document comes should inform themselves about, and observe any such restrictions.

The report is based upon information obtained from sources believed to be reliable, but we do not make any representation or warranty that it is accurate, complete or up to date and it should not be relied upon as such. Way2Wealth or any of its affiliates or employees makes no warranties, either express or implied of any kind regarding any matter pertaining to this report, including, but not limited to warranties of suitability, fitness for a particular purpose, accuracy, timeliness, completeness or non-infringement. We accept no obligation to correct or update the information or opinions in it. Way2Wealth or any of its affiliates or employees shall not be in any way responsible for any loss or damage that may arise to any person from any inadvertent error in the information contained in this report. The recipients of this report should rely on their own investigations. In no event shall Way2Wealth be liable for any damages of any kind, including, but not limited to, indirect, special, incidental, consequential, punitive, lost profits, or lost opportunity, whether or not Way2Wealth has advised of the possibility of such damages.

This material contains statements that are forward-looking; such statements are based upon the current beliefs and expectations and are subject to significant risks and uncertainties. Actual results may differ from those set forth in the forward-looking statements. These uncertainties include but are not limited to: the risk of adverse movements or volatility in the securities markets or in interest or foreign exchange rates or indices; adverse impact from an economic slowdown; downturn in domestic or foreign securities and trading conditions or markets; increased competition; unfavourable political and diplomatic developments; change in the governmental or regulatory policies; failure of a corporate event and such others. This is not an offer to buy or sell or a solicitation of an offer to buy or sell any security or instrument or to participate in any particular trading strategy. No part of this material may be copied or duplicated in any form by any means or redistributed without the written consent of Way2Wealth. In no event shall any reader publish, retransmit, redistribute or otherwise reproduce any information provided by Way2Wealth in any format to anyone. Way2Wealth and its affiliates, officers, directors and employees including persons involved in the preparation or issuance of this report may from time to time have interest in securities / positions, financial or otherwise in the securities related to the information contained in this report.