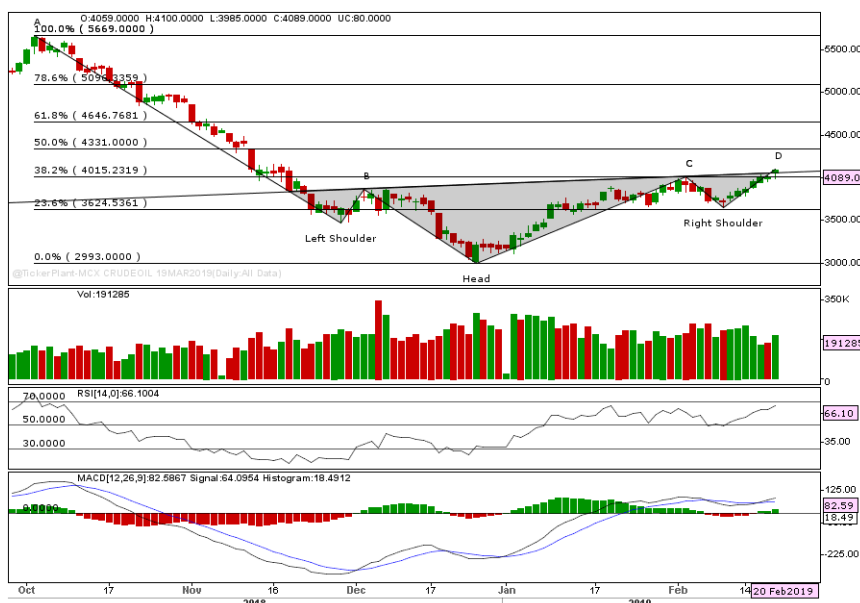


MCX CRUDE OIL MAR



- Crude oil prices opened slightly higher in the last session and prices corrected gradually for first half of the session till low of 3985. Later prices rose strongly for the remaining session till high of 4100.
- Prices have been rising gradually since last week and broken out from its inverse head & shoulders chart pattern in the last session.
- Prices are expected to rise further from these levels towards immediate strong resistance placed around 50% Fibonacci retracement of its fall from high of 5669 till low of 2993, which is placed at 4331 level.
- On the lower side, immediate supports are placed around 4050 and 3950 levels. Buying on minor pullbacks is recommended in Crude oil for the day.

Today's Actionable

Commodity	Expiry	Action	Entry	Target	Stop loss
Crude oil	Mar	Buy	Around 4050	4330	3950
Silver	Mar	Buy	Above 40800	41700	40200
Copper	Feb	Buy	Around 453	465	445

MCX

Commodity	Expiry	Close (Rs)	Change	% Change
GOLD	05 APR 2019	33870	-29	-0.09
SILVER	05 MAR 2019	40891	334	0.82
COPPER	28 FEB 2019	458	5.5	1.22
CRUDEOIL	19 MAR 2019	4089	56	1.39
ZINC	28 FEB 2019	193.8	2.3	1.2
LEAD	28 FEB 2019	144.75	1.35	0.94
ALUMINIUM	28 FEB 2019	132.05	1.2	0.92
NICKEL	28 FEB 2019	914.5	15.9	1.77
NATURALGAS	25 FEB 2019	188.1	-1.3	-0.69
MENTHAOIL	28 FEB 2019	1659.9	7.4	0.45

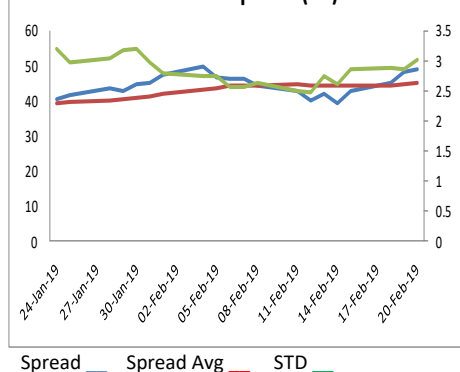
NCDEX

Commodity	Expiry	Close (Rs)	Change	% Change
GUARGUM5	19 MAR 2019	8321	-41	-0.49
GUARSEED10	19 MAR 2019	4205	-16.5	-0.39
CHANA	19 MAR 2019	4242	-32	-0.75
CASTOR	19 MAR 2019	5296	38	0.72
RMSEED	16 APR 2019	3912	-10	-0.25
SYBEANIDR	19 MAR 2019	3780	-16	-0.42
SYOREF	19 MAR 2019	768.75	-1.3	-0.17
JEERAUNJHA	19 MAR 2019	15615	-75	-0.48
TMCFGRNZM	16 APR 2019	6226	-22	-0.35
COCUDAKL	19 MAR 2019	1978	21.5	1.1

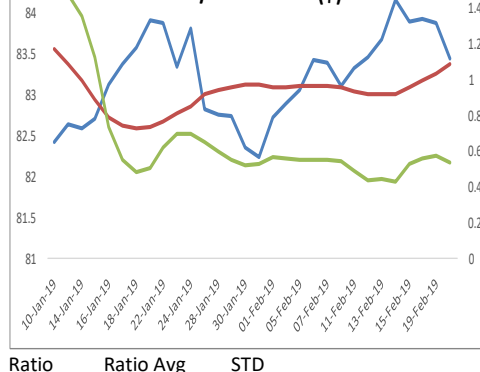
GLOBAL

Exchange	Commodity	Close (\$)	Change	% Change
Comex	Gold	1348.35	3.55	0.26%
Comex	Silver	16.117	0.15	0.94%
Nymex	Crude Oil WTI	57.24	0.79	1.40%
ICE	Brent Oil	67.11	0.66	0.99%
Nymex	Natural Gas	2.647	-0.015	-0.56%
LME	Copper	6410.5	78	1.23%
LME	Lead	2046.25	25.75	1.27%
LME	Zinc	2699.5	36.5	1.37%
LME	Aluminium	1874.5	17.75	0.96%
LME	Nickel	12922.5	260	2.05%

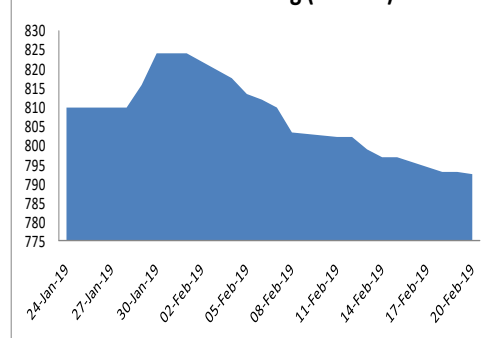
Zinc-Lead Spread (Rs)



Gold/Silver Ratio (\$)



SPDR Gold holding (Tonnes)



ECONOMIC DATA & EVENTS					
TIME(IST)	COUNTRY	DATA & EVENTS	ACTUAL	FORECAST	PREVIOUS
6:00 PM	EU	ECB Publishes Account of Monetary Policy Meeting	-	-	-
7:00 PM	US	Core Durable Goods Orders (MoM) (Dec)	-	0.3%	-0.4%
7:00 PM	US	Durable Goods Orders (MoM) (Dec)	-	1.5%	0.7%
7:00 PM	US	Initial Jobless Claims	-	229K	239K
7:00 PM	US	Philadelphia Fed Manufacturing Index (Feb)	-	15.6	17
8:30 PM	US	Existing Home Sales (MoM) (Jan)	-	0.8%	-6.4%
8:30 PM	US	Existing Home Sales (Jan)	-	5.01M	4.99M
9:00 PM	US	Natural Gas Storage	-	-157B	-78B
9:30 PM	US	Crude Oil Inventories	-	3.100M	3.633M

DAILY PIVOT LEVELS							
Symbol	Expiry	LTP	S2	S1	Pivot	R1	R2
GOLD	05 APR 2019	33870	33713	33792	33911	33990	34109
SILVER	05 MAR 2019	40891	40335	40613	40803	41081	41271
COPPER	28 FEB 2019	458.0	448.8	453.4	455.8	460.4	462.8
CRUDEOIL	19 MAR 2019	4089	3943	4016	4058	4131	4173
ZINC	28 FEB 2019	193.8	190.1	191.9	193.1	194.9	196.1
LEAD	28 FEB 2019	144.8	142.2	143.5	144.3	145.5	146.3
ALUMINIUM	28 FEB 2019	132.1	130.5	131.3	131.7	132.5	133.0
NICKEL	28 FEB 2019	914.5	892.8	903.7	910.2	921.1	927.6
NATURALGAS	25 FEB 2019	188.1	185.2	186.7	189.1	190.6	193.0
MENTHAOIL	28 FEB 2019	1659.9	1623.0	1641.4	1652.5	1670.9	1682.0
GUARGUM5	19 MAR 2019	8321	8194	8257	8324	8387	8454
GUARGUM5	16 APR 2019	8411	8300	8356	8415	8471	8530
GUARSEED10	19 MAR 2019	4205	4161	4183	4205	4227	4250
GUARSEED10	16 APR 2019	4253	4212	4232	4252	4273	4293
CHANA	19 MAR 2019	4242	4219	4230	4245	4256	4271
CHANA	16 APR 2019	4273	4258	4265	4276	4283	4294
CASTOR	19 MAR 2019	5296	5231	5263	5285	5317	5339
CASTOR	16 APR 2019	5370	5302	5336	5356	5390	5410
RMSEED	16 APR 2019	3912	3889	3901	3914	3926	3939
RMSEED	20 MAY 2019	3950	3930	3940	3950	3960	3970
SYBEANIDR	19 MAR 2019	3780	3748	3764	3786	3802	3824
SYBEANIDR	16 APR 2019	3822	3791	3807	3828	3844	3865
SYOREF	19 MAR 2019	768.8	764.7	766.7	769.8	771.8	774.9
SYOREF	16 APR 2019	758.5	752.8	755.7	759.3	762.2	765.8
COCUDAKL	19 MAR 2019	1978	1942	1960	1972	1990	2001
COCUDAKL	16 APR 2019	2006	1971	1988	2000	2017	2029
JEERAUNJHA	19 MAR 2019	15615	15485	15550	15630	15695	15775
JEERAUNJHA	16 APR 2019	15275	15218	15247	15298	15327	15378
TMCFCGRNZM	16 APR 2019	6226	6179	6203	6231	6255	6283
TMCFCGRNZM	20 MAY 2019	6312	6264	6288	6304	6328	6344
DHANIYA	20 MAY 2019	6266	6162	6214	6253	6305	6344
DHANIYA	16 APR 2019	6191	6088	6139	6182	6233	6276
COTTON	29 MAR 2019	20370	20277	20323	20397	20443	20517
COTTON	28 FEB 2019	20080	19980	20030	20100	20150	20220

TEAM

ANALYST	DESIGNATION	EMAIL	TELEPHONE
Aditya Agarwal	Head – Technical Research	aditya@way2wealth.com	+9122-61462955
Harish Jurey	Sr. Technical Analyst – Forex & Commodity	harishjurey@way2wealth.com	+9122-61462952
Mohit Agarwal	Technical Analyst – Forex & Commodity	mohitk@way2wealth.com	+9122-61462954
Monil Shah, CMT	Technical Analyst – Equity & Forex	monilshah@way2wealth.com	+9122-61462980

Disclaimer

Analyst Certification: I, Mohit Agarwal, the research analyst and author of this report, hereby certify that the views expressed in this research report accurately reflect our personal views about the subject securities, issuers, products, sectors or industries. It is also certified that no part of the compensation of the analyst(s) was, is, or will be directly or indirectly related to the inclusion of specific recommendations or views in this research. The analyst(s), principally responsible for the preparation of this research report, receives compensation based on overall revenues of the company (Way2Wealth Brokers Private Limited, hereinafter referred to as Way2Wealth) and has taken reasonable care to achieve and maintain independence and objectivity in making any recommendations.

It is confirmed that Mohit Agarwal, the author of this report has not received any compensation from the companies mentioned in the report in the preceding 12 months. Our research professionals are paid in part based on the profitability of Way2Wealth, which include earnings from other business. Neither Way2Wealth nor its directors, employees, agents or representatives shall be liable for any damages whether direct or indirect, incidental, special or consequential including lost revenue or lost profits that may arise from or in connection with the use of the information contained in this report.

This report is for the personal information of the authorized recipient and does not construe to be any investment, legal or taxation advice to you. Way2Wealth is not soliciting any action based upon it. Nothing in this research shall be construed as a solicitation to buy or sell any security or product, or to engage in or refrain from engaging in any such transaction. The contents of this material are general and are neither comprehensive nor appropriate for every individual and are solely for the informational purposes of the readers. This material does not take into account the specific objectives, financial situation or needs of an individual/s or a Corporate/s or any entity/s.

This research has been prepared for the general use of the clients of the Way2Wealth and must not be copied, either in whole or in part, or distributed or redistributed to any other person in any form. If you are not the intended recipient you must not use or disclose the information in this research in any way. Though disseminated to all the customers simultaneously, not all customers may receive this report at the same time. Way2Wealth will not treat recipients as customers by virtue of their receiving this report. The distribution of this document in other jurisdictions may be restricted by the law applicable in the relevant jurisdictions and persons into whose possession this document comes should inform themselves about, and observe any such restrictions.

The report is based upon information obtained from sources believed to be reliable, but we do not make any representation or warranty that it is accurate, complete or up to date and it should not be relied upon as such. Way2Wealth or any of its affiliates or employees makes no warranties, either express or implied of any kind regarding any matter pertaining to this report, including, but not limited to warranties of suitability, fitness for a particular purpose, accuracy, timeliness, completeness or non-infringement. We accept no obligation to correct or update the information or opinions in it. Way2Wealth or any of its affiliates or employees shall not be in any way responsible for any loss or damage that may arise to any person from any inadvertent error in the information contained in this report. The recipients of this report should rely on their own investigations. In no event shall Way2Wealth be liable for any damages of any kind, including, but not limited to, indirect, special, incidental, consequential, punitive, lost profits, or lost opportunity, whether or not Way2Wealth has advised of the possibility of such damages.

This material contains statements that are forward-looking; such statements are based upon the current beliefs and expectations and are subject to significant risks and uncertainties. Actual results may differ from those set forth in the forward-looking statements. These uncertainties include but are not limited to: the risk of adverse movements or volatility in the securities markets or in interest or foreign exchange rates or indices; adverse impact from an economic slowdown; downturn in domestic or foreign securities and trading conditions or markets; increased competition; unfavourable political and diplomatic developments; change in the governmental or regulatory policies; failure of a corporate event and such others. This is not an offer to buy or sell or a solicitation of an offer to buy or sell any security or instrument or to participate in any particular trading strategy. No part of this material may be copied or duplicated in any form by any means or redistributed without the written consent of Way2Wealth. In no event shall any reader publish, retransmit, redistribute or otherwise reproduce any information provided by Way2Wealth in any format to anyone. Way2Wealth and its affiliates, officers, directors and employees including persons involved in the preparation or issuance of this report may from time to time have interest in securities / positions, financial or otherwise in the securities related to the information contained in this report.