

SENSEX	35756.26 (+1.14%)
NIFTY	10735.45 (+1.24%)

Sector Indices	Close	% Change
NIFTY AUTO	8122	0.60
NIFTY BANK	26956	1.01
NIFTY ENERGY	14679	1.86
NIFTY FMCG	29053	0.15
NIFTY IT	15609	1.80
NIFTY METAL	2765	2.80
NIFTY MIDCAP 50	4468	0.88
NIFTY PHARMA	8606	0.63
NIFTY PSU BANK	2743	1.72
NIFTY REALTY	229	0.26

Key Levels - Nifty

Support	10680 / 10630
Resistance	10790 / 10840

FII & DII Activities (Fig. in Cr)

Date	FII	DII
20-Feb-19	713.47	113.27
19-Feb-19	-813.76	1163.85
18-Feb-19	-1239.79	2336.74
15-Feb-19	-966.43	853.25
14-Feb-19	-250.23	1225.24
13-Feb-19	-676.63	713.10
12-Feb-19	-466.78	-122.64
11-Feb-19	-125.05	-232.55
08-Feb-19	843.73	-960.04
07-Feb-19	418.01	294.11

Key Levels - Bank Nifty

Support	27830 / 26700
Resistance	27080 / 27210

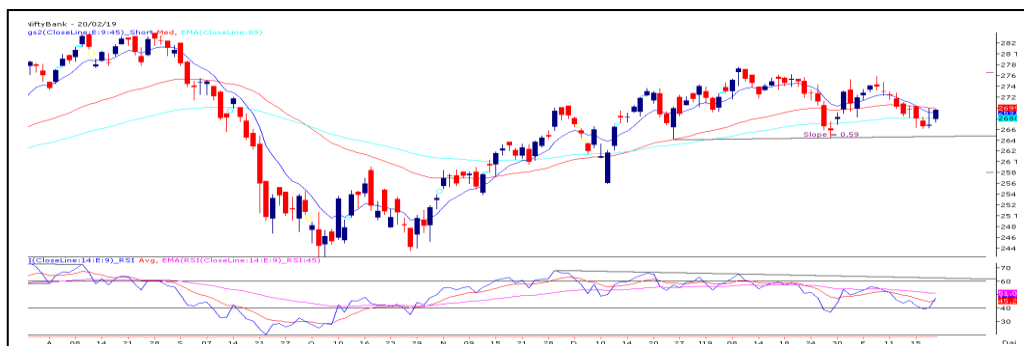
Nifty Spot Chart



Technical Outlook

Yesterday, the Nifty opened on cheerful and made its opening tick inside the descending triangle pattern. Post opening, nifty made an attempt to rally higher however it encountered resistance near 10700 which led to mild profit booking. Post mid-session, the momentum gathered and we saw sharp surge. In the process, nifty eventually broke the upper band of triangle pattern. Due to yesterday's rally the descending triangle formed on hourly chart got negated. Going forward, 10790 will act as an immediate resistance above which the next resistance seen at 10840. On the flip side, 10680 – 10630 are support for the day.

Bank Nifty Spot Chart



Technical Outlook

Yesterday, the Nifty Bank index opened higher with a gap of nearly 100 points and made valiant attempt to rally higher. However, the bouts of profit booking during the first half pulled index lower. Post mid-session, we saw decent up move as a result index recouped its early morning gains. Looking at the daily chart, the daily 9-45 EMA has signalled a negative crossover. Also, the RSI (14) signalled negative reversal pattern. The said pattern will be activated if index starts sustaining below 27830 in that case we may see further slide towards 26700 – 26460 levels respectively. Higher side, 27080 – 27210 are the immediate resistance.

Stocks For Today

Name	Entry	Target	Stop loss
HEXAWARE	Buy At cmp 356.60	368	350
APOLLOTYRE	Buy Around 208	218	203
PVR	Sell Around 1480	1400	1520

DailyPivotLevelsForNifty50Stocks					
ScripName	Support2	Support 1	Pivot	Resist 1	Resist2
ADANI PORTS	335.3	345.0	350.7	360.4	366.1
ASIAN PAINT	1367.8	1382.3	1390.6	1405.1	1413.4
AXIS BANK	691.9	696.1	699.6	703.8	707.3
BAJAJ-AUTO	2709.2	2742.0	2770.0	2802.7	2830.7
BAJAJ FINSV	5879.1	5938.8	5991.9	6051.6	6104.7
BAJ FINANCE	2553.5	2579.8	2597.3	2623.6	2641.1
BHARTIARTL	302.4	305.7	308.3	311.6	314.2
BPCL	332.0	336.6	340.7	345.2	349.3
CIPLA	536.4	538.8	541.0	543.3	545.5
COALINDIA	212.1	213.5	215.0	216.4	217.8
DRREDDY	2463.8	2494.5	2539.2	2569.9	2614.7
EICHER MOT	20249.5	20389.0	20519.5	20659.0	20789.5
GAIL	314.1	321.9	327.3	335.1	340.4
GRASIM	716.3	723.5	728.5	735.7	740.7
HCLTECH	1013.0	1035.5	1048.5	1071.0	1084.0
HDFC	1850.9	1860.7	1867.8	1877.6	1884.8
HDFC BANK	2071.3	2089.8	2100.4	2118.9	2129.5
HEROMOTOCO	2575.6	2599.7	2630.7	2654.8	2685.9
HINDALCO	185.1	189.1	191.5	195.4	197.8
HINDPETRO	212.6	216.8	219.3	223.5	226.1
HINDUNILVR	1709.9	1721.7	1733.8	1745.6	1757.8
IBULHSGFIN	607.1	626.1	639.1	658.1	671.1
ICICIBANK	339.8	342.5	345.1	347.8	350.3
INDUSINDBK	1463.3	1472.1	1482.8	1491.6	1502.3
INFRA TEL	309.0	313.6	318.3	322.9	327.5
INFY	719.6	730.2	736.6	747.1	753.5
IOC	123.8	126.6	128.6	131.4	133.4
ITC	272.6	274.2	275.9	277.5	279.1
JSW STEEL	263.9	269.0	272.6	277.7	281.3
KOTAK BANK	1274.2	1282.0	1287.0	1294.8	1299.8
LT	1256.0	1266.3	1274.5	1284.7	1292.9
M&M	623.9	628.7	633.0	637.9	642.2
MARUTI	6763.8	6806.9	6847.4	6890.5	6931.0
NTPC	129.5	133.4	136.1	140.0	142.7
ONGC	137.8	140.9	143.1	146.3	148.5
POWERGRID	177.0	179.4	181.0	183.4	185.0
RELIANCE	1210.1	1222.2	1231.1	1243.2	1252.1
SBIN	262.8	265.2	266.8	269.2	270.8
SUNPHARMA	412.6	417.5	421.0	425.9	429.4
TATAMOTORS	162.1	163.5	165.1	166.4	168.0
TATA STEEL	464.5	477.8	485.8	499.2	507.2
TCS	1857.5	1886.1	1910.0	1938.6	1962.5
TECHM	773.6	793.0	804.6	824.0	835.6
TITAN	1018.0	1025.4	1034.9	1042.3	1051.8
ULTRACEMCO	3421.3	3497.3	3547.2	3623.2	3673.1
UPL	806.7	814.7	821.9	829.9	837.1
VEDL	151.5	155.9	158.4	162.8	165.3
WIPRO	356.3	364.3	369.1	377.1	381.9
YES BANK	210.6	214.2	217.0	220.7	223.5
ZEEL	432.2	438.6	444.8	451.2	457.4

TEAM

ANALYST	DESIGNATION	EMAIL	TELEPHONE
Aditya Agarwal	Head – Technical Research	aditya@way2wealth.com	+91 22-61462955
Monil Shah, CMT	Sr. Technical Analyst – Equity & Forex	monilshah@way2wealth.com	+91 22-61462980
Harish Jujarey	Sr. Technical Analyst – Commodity	harishjujarey@way2wealth.com	+91 22-61462952
Mohit Agarwal	Technical Analyst – Forex & Commodity	mohitk@way2wealth.com	+91 22-61462954

Disclaimer

Analyst Certification: I, Monil Shah, CMT the research analyst and author of this report, hereby certify that the views expressed in this research report accurately reflect our personal views about the subject securities, issuers, products, sectors or industries. It is also certified that no part of the compensation of the analyst(s) was, is, or will be directly or indirectly related to the inclusion of specific recommendations or views in this research. The analyst(s), principally responsible for the preparation of this research report, receives compensation based on overall revenues of the company (Way2Wealth Brokers Private Limited, hereinafter referred to as Way2Wealth) and has taken reasonable care to achieve and maintain independence and objectivity in making any recommendations.

It is confirmed that Monil Shah, CMT the author of this report has not received any compensation from the companies mentioned in the report in the preceding 12 months. Our research professionals are paid in part based on the profitability of Way2Wealth, which include earnings from other business. Neither Way2Wealth nor its directors, employees, agents or representatives shall be liable for any damages whether direct or indirect, incidental, special or consequential including lost revenue or lost profits that may arise from or in connection with the use of the information contained in this report.

This report is for the personal information of the authorized recipient and does not construe to be any investment, legal or taxation advice to you. Way2Wealth is not soliciting any action based upon it. Nothing in this research shall be construed as a solicitation to buy or sell any security or product, or to engage in or refrain from engaging in any such transaction. The contents of this material are general and are neither comprehensive nor appropriate for every individual and are solely for the informational purposes of the readers. This material does not take into account the specific objectives, financial situation or needs of an individual/s or a Corporate/s or any entity/s.

This research has been prepared for the general use of the clients of the Way2Wealth and must not be copied, either in whole or in part, or distributed or redistributed to any other person in any form. If you are not the intended recipient you must not use or disclose the information in this research in any way. Though disseminated to all the customers simultaneously, not all customers may receive this report at the same time. Way2Wealth will not treat recipients as customers by virtue of their receiving this report. The distribution of this document in other jurisdictions may be restricted by the law applicable in the relevant jurisdictions and persons into whose possession this document comes should inform themselves about, and observe any such restrictions.

The report is based upon information obtained from sources believed to be reliable, but we do not make any representation or warranty that it is accurate, complete or up to date and it should not be relied upon as such. Way2Wealth or any of its affiliates or employees makes no warranties, either express or implied of any kind regarding any matter pertaining to this report, including, but not limited to warranties of suitability, fitness for a particular purpose, accuracy, timeliness, completeness or non-infringement. We accept no obligation to correct or update the information or opinions in it. Way2Wealth or any of its affiliates or employees shall not be in any way responsible for any loss or damage that may arise to any person from any inadvertent error in the information contained in this report. The recipients of this report should rely on their own investigations. In no event shall Way2Wealth be liable for any damages of any kind, including, but not limited to, indirect, special, incidental, consequential, punitive, lost profits, or lost opportunity, whether or not Way2Wealth has advised of the possibility of such damages.

This material contains statements that are forward-looking; such statements are based upon the current beliefs and expectations and are subject to significant risks and uncertainties. Actual results may differ from those set forth in the forward-looking statements. These uncertainties include but are not limited to: the risk of adverse movements or volatility in the securities markets or in interest or foreign exchange rates or indices; adverse impact from an economic slowdown; downturn in domestic or foreign securities and trading conditions or markets; increased competition; unfavourable political and diplomatic developments; change in the governmental or regulatory policies; failure of a corporate event and such others. This is not an offer to buy or sell or a solicitation of an offer to buy or sell any security or instrument or to participate in any particular trading strategy. No part of this material may be copied or duplicated in any form by any means or redistributed without the written consent of Way2Wealth. In no event shall any reader publish, retransmit, redistribute or otherwise reproduce any information provided by Way2Wealth in any format to anyone. Way2Wealth and its affiliates, officers, directors and employees including persons involved in the preparation or issuance of this report may from time to time have interest in securities / positions, financial or otherwise in the securities related to the information contained in this report.