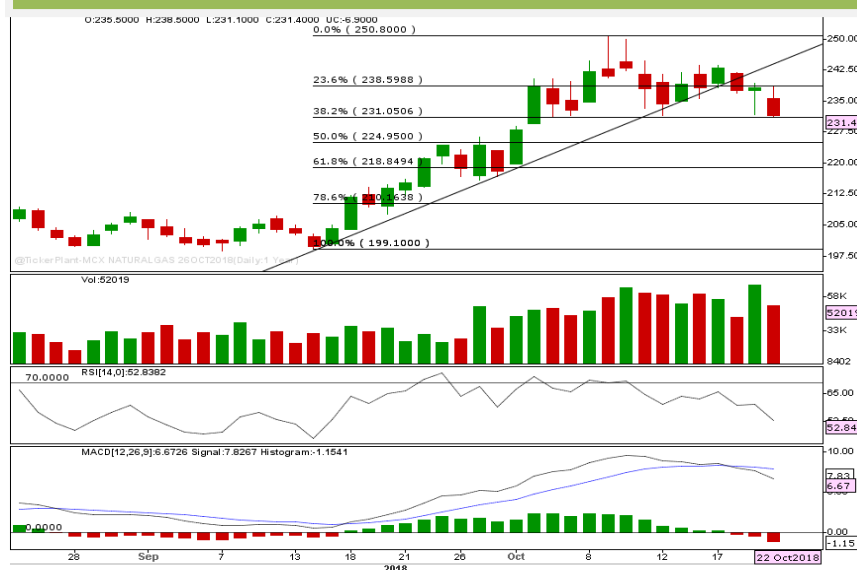


MCX NATURAL GAS OCT



- Natural gas prices opened sharply lower with gap in the last session and prices recovered for first half of the session till high of 238.50. Later prices fell further for the remaining session till low of 231.10.
- Prices have been correcting gradually since last few sessions after breaking down from its short term rising trend line support.
- Prices are expected to correct further from these levels if break below 231 level towards next supports placed around 50% & 61.8% Fibonacci retracements of its rally from low of 199.10 till high of 250.80, which are placed at 225 & 218.80 levels respectively.
- On the higher side immediate resistances are placed around 239 and 244 levels.

Today's Actionable

Commodity	Expiry	Action	Entry	Target	Stop loss
Nat gas	Oct	Sell	Below 231	219	239
Chana	Nov	Buy	Around 4125	4250	4045
Soy oil	Nov	Buy	Around 762	772	756

MCX

Commodity	Expiry	Close (Rs)	Change	% Change
GOLD	05 DEC 2018	31904	2	0.01
SILVER	05 DEC 2018	38753	-43	-0.11
COPPER	30 NOV 2018	454.95	1.95	0.43
CRUDEOIL	16 NOV 2018	5107	-8	-0.16
ZINC	31 OCT 2018	200.35	3.75	1.91
LEAD	31 OCT 2018	146.7	0.8	0.55
ALUMINIUM	31 OCT 2018	147.9	-0.05	-0.03
NICKEL	31 OCT 2018	915.9	1.6	0.17
NATURALGAS	26 OCT 2018	231.3	-7	-2.94
MENTHAOIL	31 OCT 2018	1723	20.7	1.22

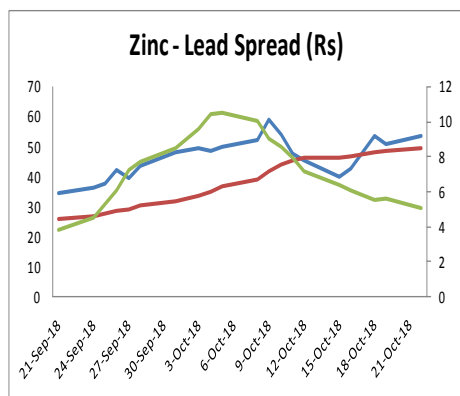
NCDEX

Commodity	Expiry	Close (Rs)	Change	% Change
GUARGUM5	20 NOV 2018	9780	212	2.16
GUARSEED10	20 NOV 2018	4534	91.5	2.01
CHANA	20 NOV 2018	4112	37	0.9
CASTOR	20 NOV 2018	5254	64	1.22
RMSEED	20 NOV 2018	4166	42	1.01
SYBEANIDR	20 NOV 2018	3246	-23	-0.71
SYOREF	20 NOV 2018	770	-1.4	-0.18
JEERAUNJHA	20 NOV 2018	20405	-345	-1.69
TMCFGRNZM	20 NOV 2018	6560	-350	-1.7
COCUDAKL	20 DEC 2018	1789	50	0.76

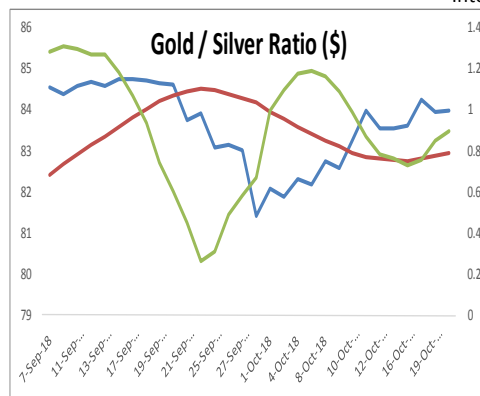
International Prices

Exchange	Commodity	Close (\$)	Change	% Change
Comex	Gold	1225.5	1.8	0.15%
Comex	Silver	14.59	-0.066	-0.45%
Nymex	Crude Oil WTI	69.06	-0.06	-0.09%
ICE	Brent Oil	79.71	-0.07	-0.09%
Nymex	Natural Gas	3.142	-0.108	-3.32%
LME	Copper	6228.25	6.5	0.10%
LME	Lead	2000	3.75	0.19%
LME	Zinc	2652.25	25.5	0.97%
LME	Aluminium	2004	-4.5	-0.22%
LME	Nickel	12457.5	-15	-0.12%

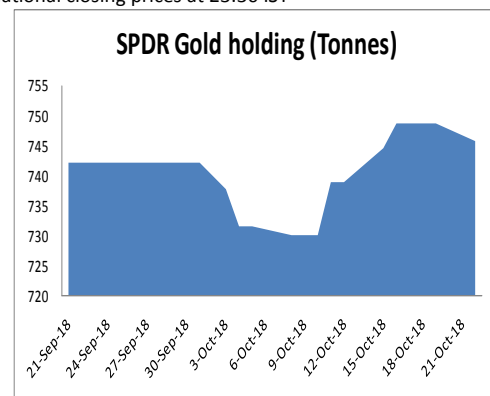
International closing prices at 23:30 IST



Spread — Spread Avg — STD —



Ratio — Ratio Avg — STD —



ECONOMIC DATA & EVENTS					
TIME(IST)	COUNTRY	DATA & EVENTS	ACTUAL	FORECAST	PREVIOUS
-	-	-	-	-	-
-	-	-	-	-	-
-	-	-	-	-	-
-	-	-	-	-	-
-	-	-	-	-	-
-	-	-	-	-	-

DAILY PIVOT LEVELS							
Symbol	Expiry	LTP	S2	S1	Pivot	R1	R2
GOLD	05 DEC 2018	31904	31765	31834	31870	31939	31975
SILVER	05 DEC 2018	38753	38451	38602	38756	38907	39061
COPPER	30 NOV 2018	455.0	450.1	452.5	456.5	458.9	462.9
CRUDEOIL	16 NOV 2018	5108	5018	5063	5099	5144	5180
ZINC	31 OCT 2018	200.4	196.4	198.4	199.4	201.4	202.5
LEAD	31 OCT 2018	146.8	144.4	145.6	146.8	148.0	149.3
ALUMINIUM	31 OCT 2018	147.9	146.6	147.2	148.2	148.9	149.9
NICKEL	31 OCT 2018	915.9	905.2	910.6	919.3	924.7	933.4
NATURALGAS	26 OCT 2018	231.3	226.2	228.8	233.6	236.2	241.0
MENTHAOIL	31 OCT 2018	1723.0	1711.5	1717.3	1724.6	1730.4	1737.7
GUARGUM5	20 NOV 2018	10018	9637	9828	9970	10161	10303
GUARGUM5	20 DEC 2018	10150	9773	9961	10101	10289	10429
GUARSEED10	20 NOV 2018	4636	4461	4548	4614	4701	4767
GUARSEED10	20 DEC 2018	4701	4526	4613	4674	4761	4822
CHANA	20 NOV 2018	4135	3995	4065	4132	4202	4269
CHANA	20 DEC 2018	4155	4030	4093	4154	4217	4278
CASTOR	20 NOV 2018	5330	5201	5265	5349	5413	5497
CASTOR	20 DEC 2018	5368	5236	5302	5384	5450	5532
RMSEED	20 NOV 2018	4215	4103	4159	4193	4249	4283
RMSEED	20 DEC 2018	4276	4167	4221	4254	4308	4341
SYBEANIDR	20 NOV 2018	3223	3116	3170	3202	3256	3288
SYBEANIDR	20 DEC 2018	3272	3165	3219	3250	3304	3335
SYOREF	20 NOV 2018	763.4	758.4	760.9	762.5	765.0	766.6
SYOREF	20 DEC 2018	767.6	761.0	764.3	766.4	769.7	771.8
COCUDAKL	20 DEC 2018	1792	1746	1769	1789	1811	1831
COCUDAKL	18 JAN 2019	1809	1774	1791	1807	1825	1841
JEERAUNJHA	20 NOV 2018	20020	19680	19850	20135	20305	20590
JEERAUNJHA	20 DEC 2018	20275	19958	20117	20383	20542	20808
TMCFRGNZM	20 NOV 2018	6610	6466	6538	6602	6674	6738
TMCFRGNZM	20 DEC 2018	6602	6486	6544	6612	6670	6738
DHANIYA	20 DEC 2018	5841	5631	5736	5825	5930	6019
DHANIYA	20 NOV 2018	5695	5492	5594	5692	5794	5892
COTTON	30 NOV 2018	22910	22470	22690	22810	23030	23150
COTTON	31 OCT 2018	23170	22683	22927	23083	23327	23483

TEAM

ANALYST	DESIGNATION	EMAIL	TELEPHONE
Aditya Agarwal	Head – Technical Research	aditya@way2wealth.com	+91 22-61462955
Harish Jujarey	Sr. Technical Analyst – Forex & Commodity	harishjujarey@way2wealth.com	+91 22-61462952
Mohit Agarwal	Technical Analyst – Forex & Commodity	mohitk@way2wealth.com	+91 22-61462954
Monil Shah, CMT	Technical Analyst – Equity & Forex	monilshah@way2wealth.com	+91 22-61462980

Disclaimer

Analyst Certification: I, Mohit Agarwal, the research analyst and author of this report, hereby certify that the views expressed in this research report accurately reflect our personal views about the subject securities, issuers, products, sectors or industries. It is also certified that no part of the compensation of the analyst(s) was, is, or will be directly or indirectly related to the inclusion of specific recommendations or views in this research. The analyst(s), principally responsible for the preparation of this research report, receives compensation based on overall revenues of the company (Way2Wealth Brokers Private Limited, hereinafter referred to as Way2Wealth) and has taken reasonable care to achieve and maintain independence and objectivity in making any recommendations.

It is confirmed that Mohit Agarwal, the author of this report has not received any compensation from the companies mentioned in the report in the preceding 12 months. Our research professionals are paid in part based on the profitability of Way2Wealth, which include earnings from other business. Neither Way2Wealth nor its directors, employees, agents or representatives shall be liable for any damages whether direct or indirect, incidental, special or consequential including lost revenue or lost profits that may arise from or in connection with the use of the information contained in this report.

This report is for the personal information of the authorized recipient and does not construe to be any investment, legal or taxation advice to you. Way2Wealth is not soliciting any action based upon it. Nothing in this research shall be construed as a solicitation to buy or sell any security or product, or to engage in or refrain from engaging in any such transaction. The contents of this material are general and are neither comprehensive nor appropriate for every individual and are solely for the informational purposes of the readers. This material does not take into account the specific objectives, financial situation or needs of an individual/s or a Corporate/s or any entity/s.

This research has been prepared for the general use of the clients of the Way2Wealth and must not be copied, either in whole or in part, or distributed or redistributed to any other person in any form. If you are not the intended recipient you must not use or disclose the information in this research in any way. Though disseminated to all the customers simultaneously, not all customers may receive this report at the same time. Way2Wealth will not treat recipients as customers by virtue of their receiving this report. The distribution of this document in other jurisdictions may be restricted by the law applicable in the relevant jurisdictions and persons into whose possession this document comes should inform themselves about, and observe any such restrictions.

The report is based upon information obtained from sources believed to be reliable, but we do not make any representation or warranty that it is accurate, complete or up to date and it should not be relied upon as such. Way2Wealth or any of its affiliates or employees makes no warranties, either express or implied of any kind regarding any matter pertaining to this report, including, but not limited to warranties of suitability, fitness for a particular purpose, accuracy, timeliness, completeness or non-infringement. We accept no obligation to correct or update the information or opinions in it. Way2Wealth or any of its affiliates or employees shall not be in any way responsible for any loss or damage that may arise to any person from any inadvertent error in the information contained in this report. The recipients of this report should rely on their own investigations. In no event shall Way2Wealth be liable for any damages of any kind, including, but not limited to, indirect, special, incidental, consequential, punitive, lost profits, or lost opportunity, whether or not Way2Wealth has advised of the possibility of such damages.

This material contains statements that are forward-looking; such statements are based upon the current beliefs and expectations and are subject to significant risks and uncertainties. Actual results may differ from those set forth in the forward-looking statements. These uncertainties include but are not limited to: the risk of adverse movements or volatility in the securities markets or in interest or foreign exchange rates or indices; adverse impact from an economic slowdown; downturn in domestic or foreign securities and trading conditions or markets; increased competition; unfavourable political and diplomatic developments; change in the governmental or regulatory policies; failure of a corporate event and such others. This is not an offer to buy or sell or a solicitation of an offer to buy or sell any security or instrument or to participate in any particular trading strategy. No part of this material may be copied or duplicated in any form by any means or redistributed without the written consent of Way2Wealth. In no event shall any reader publish, retransmit, redistribute or otherwise reproduce any information provided by Way2Wealth in any format to anyone. Way2Wealth and its affiliates, officers, directors and employees including persons involved in the preparation or issuance of this report may from time to time have interest in securities / positions, financial or otherwise in the securities related to the information contained in this report.