

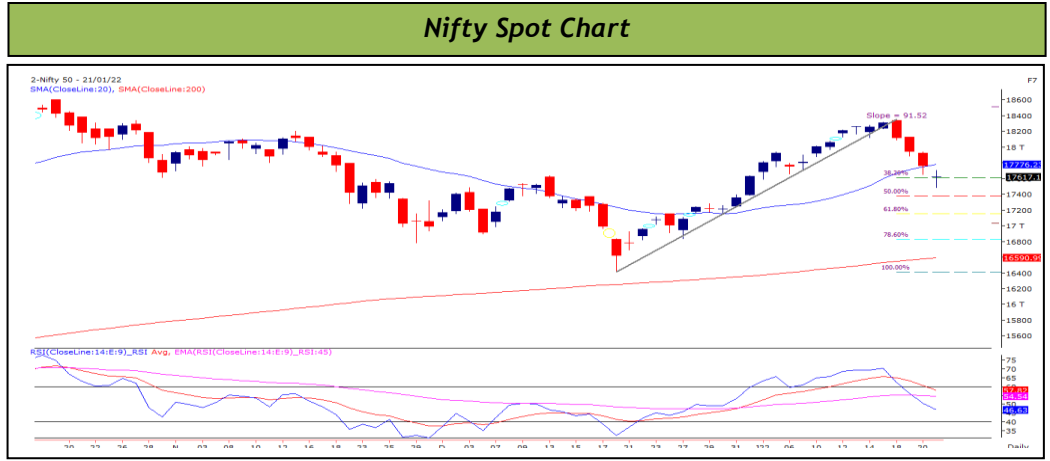
S&P BSE SENSEX	59037.18 (-0.72%)
NIFTY 50	17617.15 (-0.79%)

Sector Indices	Close	% Change
NIFTY AUTO	11562	-0.19
NIFTY BANK	37574	-0.73
NIFTY ENERGY	25056	-0.85
NIFTY FMCG	36813	0.36
NIFTY IT	36055	-1.66
NIFTY METAL	5720	-1.91
NIFTY MIDCAP 50	8437	-2.52
NIFTY PHARMA	13243	-1.57
NIFTY PSU BANK	2710	-3.05
NIFTY REALTY	491	-2.36

Key Levels - Nifty	
Support	17485 / 17400
Resistance	17710 / 17780

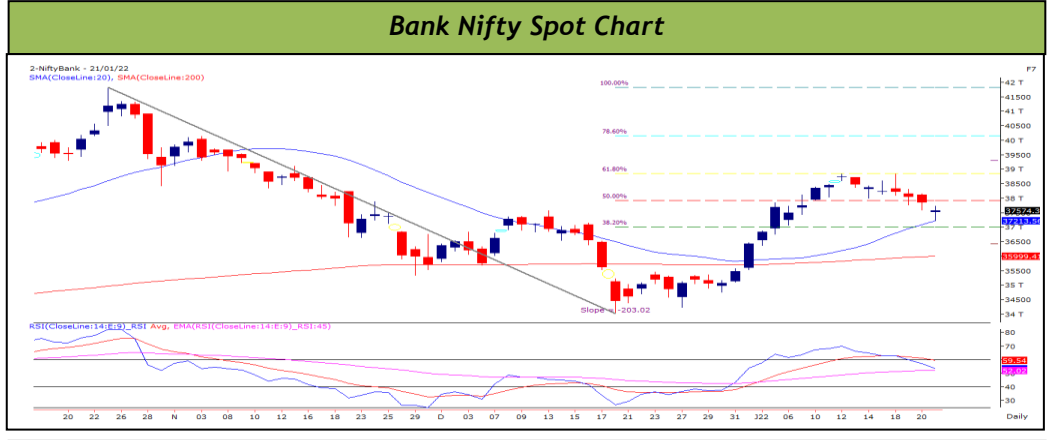
FII & DII Activities (Fig. in Cr)		
Date	FII	DII
21-Jan-22	-3148.58	269.36
20-Jan-22	-4679.84	769.26
19-Jan-22	-2704.77	-195.07
18-Jan-22	-1254.95	-200.20
17-Jan-22	-855.47	-115.31
14-Jan-22	-1598.20	371.41
13-Jan-22	-1390.85	1065.32
12-Jan-22	-1001.57	1332.01
11-Jan-22	111.91	378.74
10-Jan-22	-124.23	481.55

Key Levels - Bank Nifty	
Support	37224 / 37050
Resistance	37835 / 38170



**Technical Outlook**

The concluding session of week started on pessimistic note as Nifty opened lower with a gap of nearly 150 points on the back of negative cues across the globe. Post opening, Nifty made a valiant attempt to bounce however such bounce proven to be short-lived and nifty slipped below 17500. Subsequently, we saw decent recovery from lower levels during the last half an hour which trimmed some of its losses. In the process, Nifty ended fourth consecutive session inside negative territory. Looking at daily chart, Friday's candle resembles a formation of "Long Legged Doji" candle. Due to Friday's fall, Nifty broke and closed below its 20-SMA. For the day, Friday's low of 17485 will be an immediate support below which next support seen near 17400. On the other side, 17710 – 17780 are immediate resistance for Nifty.



**Technical Outlook**

The Nifty Bank index made its opening tick below its previous day's low and witnessed bouts of selling pressure during the initial hour of trade. Subsequently, index found support near 37250 and rebound sharply. Once again, the bears tried to pull index lower however index managed to defend its early morning low and rallied during the fag end of the day. In the process, Nifty Bank ended another session inside the negative territory and lost 0.73%. Looking at daily chart, last Friday's low of 37224.25 coincided with its 20-SMA and index formed "Doji" candle precisely on 20-SMA. Going forward, Friday's low of 37224.25 will be a crucial support for Nifty Bank and any break of said level will trigger further sell-off in that case index likely to correct till 37050 – 36750 levels respectively. Higher side, 37835 – 38170 will be a resistance for the day.

Stocks for Today			
Name	Entry	Target	Stop loss
HINDUNILVR	Buy Around 2310	2425	2250
PIDILITIND	Buy Around 2690	2765	2655
SRF	Sell Around 2490	2350	2560

### Daily Pivot Levels For Nifty50 Stocks

ScripName	Support2	Support1	Pivot	Resist1	Resist2
ADANI PORTS	714.4	704.8	724.0	733.6	743.2
ASIAN PAINT	3236.1	3197.3	3280.5	3319.3	3363.7
AXIS BANK	705.3	698.1	715.3	722.5	732.5
BAJAJ-AUTO	3301.9	3184.0	3387.9	3505.8	3591.9
BAJAJ FINSV	16005.1	15675.1	16550.1	16880.1	17425.1
BAJ FINANCE	7286.7	7199.7	7392.9	7479.9	7586.0
BHARTIARTL	685.1	674.9	699.5	709.7	724.2
BPCL	375.8	369.9	385.9	391.8	402.0
BRITANNIA	3586.3	3554.4	3607.7	3639.6	3661.0
CIPLA	858.3	849.2	869.2	878.3	889.2
COALINDIA	156.4	154.1	159.9	162.2	165.7
DIVISLAB	4102.0	4024.7	4215.2	4292.5	4405.7
DRREDDY	4430.8	4365.4	4500.4	4565.8	4635.4
EICHER MOT	2668.2	2625.3	2711.1	2754.0	2796.9
GRASIM	1771.1	1750.0	1800.0	1821.1	1850.0
HCLTECH	1155.4	1142.8	1167.6	1180.2	1192.5
HDFC	2554.9	2516.8	2580.1	2618.2	2643.4
HDFC BANK	1494.9	1468.1	1512.3	1539.1	1556.5
HDFCLIFE	634.2	627.0	640.6	647.8	654.2
HEROMOTOCO	2679.2	2608.4	2728.1	2799.0	2847.9
HINDALCO	498.7	490.7	507.3	515.3	523.8
HINDUNILVR	2272.2	2218.9	2303.3	2356.5	2387.6
ICICIBANK	796.2	787.9	803.8	812.1	819.6
INDUSINDBK	841.8	829.5	857.4	869.7	885.2
INFY	1771.8	1757.9	1789.9	1803.8	1821.9
IOC	119.8	117.9	122.7	124.6	127.4
ITC	215.2	213.4	217.9	219.7	222.4
JSWSTEEL	658.9	651.6	669.5	676.8	687.3
KOTAK BANK	1861.9	1830.0	1881.4	1913.3	1932.9
LT	1934.5	1912.9	1964.6	1986.2	2016.4
M&M	865.3	855.4	875.1	885.0	894.8
MARUTI	7949.1	7708.6	8096.6	8337.1	8484.5
NESTLEIND	18702.1	18430.0	18882.2	19154.3	19334.4
NTPC	132.4	130.7	134.3	136.0	137.8
ONGC	161.8	160.0	164.1	165.9	168.2
POWERGRID	212.3	209.5	215.8	218.6	222.0
RELIANCE	2452.5	2427.1	2477.4	2502.7	2527.6
SBILIFE	1206.7	1172.8	1235.0	1268.9	1297.2
SBIN	498.0	493.2	502.7	507.5	512.2
SHREECEM	24604.2	24171.1	25244.6	25677.6	26318.0
SUNPHARMA	800.0	791.3	809.9	818.6	828.5
TATA CONSUM	711.4	696.2	727.2	742.3	758.1
TATA MOTORS	492.8	483.7	503.3	512.4	522.9
TATA STEEL	1149.3	1128.8	1176.8	1197.2	1224.7
TCS	3785.9	3738.3	3818.7	3866.3	3899.2
TECHM	1570.6	1547.7	1611.8	1634.8	1676.0
TITAN	2501.5	2474.8	2531.7	2558.4	2588.6
ULTRACEMCO	7294.2	7230.8	7374.4	7437.9	7518.1
UPL	776.4	765.9	790.6	801.1	815.4
WIPRO	600.2	595.4	605.6	610.4	615.8

### Disclaimer

**Analyst Certification:** I, Harish Jujarey the research analyst and author of this report, hereby certify that the views expressed in this research report accurately reflect our personal views about the subject securities, issuers, products, sectors or industries. It is also certified that no part of the compensation of the analyst(s) was, is, or will be directly or indirectly related to the inclusion of specific recommendations or views in this research. The analyst(s), principally responsible for the preparation of this research report, receives compensation based on overall revenues of the company (Way2Wealth Brokers Private Limited, hereinafter referred to as Way2Wealth) and has taken reasonable care to achieve and maintain independence and objectivity in making any recommendations.

It is confirmed that Harish Jujarey the author of this report has not received any compensation from the companies mentioned in the report in the preceding 12 months. Our research professionals are paid in part based on the profitability of Way2Wealth, which include earnings from other business. Neither Way2Wealth nor its directors, employees, agents or representatives shall be liable for any damages whether direct or indirect, incidental, special or consequential including lost revenue or lost profits that may arise from or in connection with the use of the information contained in this report.

This report is for the personal information of the authorized recipient and does not construe to be any investment, legal or taxation advice to you. Way2Wealth is not soliciting any action based upon it. Nothing in this research shall be construed as a solicitation to buy or sell any security or product, or to engage in or refrain from engaging in any such transaction. The contents of this material are general and are neither comprehensive nor appropriate for every individual and are solely for the informational purposes of the readers. This material does not take into account the specific objectives, financial situation or needs of an individual/s or a Corporate/s or any entity/s.

This research has been prepared for the general use of the clients of the Way2Wealth and must not be copied, either in whole or in part, or distributed or redistributed to any other person in any form. If you are not the intended recipient you must not use or disclose the information in this research in any way. Though disseminated to all the customers simultaneously, not all customers may receive this report at the same time. Way2Wealth will not treat recipients as customers by virtue of their receiving this report. The distribution of this document in other jurisdictions may be restricted by the law applicable in the relevant jurisdictions and persons into whose possession this document comes should inform themselves about, and observe any such restrictions.

The report is based upon information obtained from sources believed to be reliable, but we do not make any representation or warranty that it is accurate, complete or up to date and it should not be relied upon as such. Way2Wealth or any of its affiliates or employees makes no warranties, either express or implied of any kind regarding any matter pertaining to this report, including, but not limited to warranties of suitability, fitness for a particular purpose, accuracy, timeliness, completeness or non-infringement. We accept no obligation to correct or update the information or opinions in it. Way2Wealth or any of its affiliates or employees shall not be in any way responsible for any loss or damage that may arise to any person from any inadvertent error in the information contained in this report. The recipients of this report should rely on their own investigations. In no event shall Way2Wealth be liable for any damages of any kind, including, but not limited to, indirect, special, incidental, consequential, punitive, lost profits, or lost opportunity, whether or not Way2Wealth has advised of the possibility of such damages.

This material contains statements that are forward-looking; such statements are based upon the current beliefs and expectations and are subject to significant risks and uncertainties. Actual results may differ from those set forth in the forward-looking statements. These uncertainties include but are not limited to: the risk of adverse movements or volatility in the securities markets or in interest or foreign exchange rates or indices; adverse impact from an economic slowdown; downturn in domestic or foreign securities and trading conditions or markets; increased competition; unfavourable political and diplomatic developments; change in the governmental or regulatory policies; failure of a corporate event and such others. This is not an offer to buy or sell or a solicitation of an offer to buy or sell any security or instrument or to participate in any particular trading strategy. No part of this material may be copied or duplicated in any form by any means or redistributed without the written consent of Way2Wealth. In no event shall any reader publish, retransmit, redistribute or otherwise reproduce any information provided by Way2Wealth in any format to anyone. Way2Wealth and its affiliates, officers, directors and employees including persons involved in the preparation or issuance of this report may from time to time have interest in securities / positions, financial or otherwise in the securities related to the information contained in this report.