

SENSEX	38564.88 (-0.21%)
NIFTY	11575.95 (-0.16%)

Sector Indices	Close	% Change
NIFTY AUTO	8683	-1.49
NIFTY BANK	29480	-0.70
NIFTY ENERGY	16011	0.42
NIFTY FMCG	30495	0.25
NIFTY IT	16166	0.10
NIFTY METAL	3042	-0.40
NIFTY MIDCAP 50	4929	0.03
NIFTY PHARMA	9389	1.11
NIFTY PSU BANK	3121	-0.40
NIFTY REALTY	263	-0.21

Key Levels - Nifty

Support	11549 / 11500
Resistance	11620 / 11660

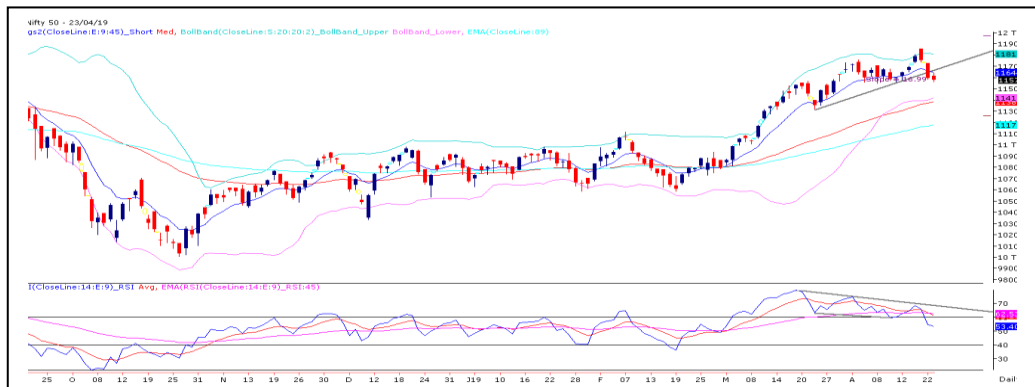
FII & DII Activities (Fig. in Cr)

Date	FII	DII
23-Apr-19	-237.47	198.35
22-Apr-19	73.08	-68.16
18-Apr-19	1038.46	-337.59
16-Apr-19	1038.58	37.22
15-Apr-19	713.22	581.36
12-Apr-19	897.45	-15.99
11-Apr-19	476.51	-16.58
10-Apr-19	1429.92	461.29
09-Apr-19	1212.35	-688.65
08-Apr-19	329.60	-623.81

Key Levels - Bank Nifty

Support	29250 / 29030
Resistance	29700 / 29930

Nifty Spot Chart



Technical Outlook

Yesterday, the Nifty index opened higher with a mild gap and made a valiant attempt to rally during the initial hour of trade. However, the bullish momentum exhausted near 11650 below the daily pivot resistance which led to fresh sell-off during the end of the day. In the process, Nifty ended the session with a nominal loss of 0.16%. At this juncture, we reiterate our view that 11549.10 which coincides with the previous daily swing move will act as an immediate support. Any sustained move beyond this level will lead to further correction towards 11500 – 11425. Higher side, the resistance comes near 11620 – 11660 level respectively.

Bank Nifty Spot Chart



Technical Outlook

The Nifty Bank opened higher with a mild gap in line with the benchmark indices. Post opening, the bouts of buying interest drove the index higher which led to a mild pullback during the first half. Post mid-session, the index resumed its southward journey and eventually broke the daily swing low of 29640.25. In the process, the index confirmed its breakdown from 'Ascending Triangle' pattern mentioned in our previous update. Now, 29281 which coincided with the March 25, 2019 close will be the final hope for bulls and any closing below 29281 will negate the daily positive reversal pattern. Higher side, 29700 – 29930 are near-term hurdles.

Stocks For Today

Name	Entry	Target	Stop loss
SIEMENS	Buy At cmp 1168.25	1200	1152
GODREJCP	Buy At cmp 671.85	690	662
NIITTECH	Sell Around 1307	1274	1325

DailyPivotLevelsForNifty50Stocks					
ScripName	Support2	Support 1	Pivot	Resist 1	Resist2
ADANI PORTS	383.2	387.1	389.4	393.2	395.5
ASIAN PAINT	1408.3	1419.6	1437.3	1448.6	1466.3
AXIS BANK	743.6	748.4	753.9	758.7	764.2
BAJAJ-AUTO	2980.7	3009.9	3040.0	3069.2	3099.3
BAJAJ FINSV	7456.4	7475.7	7504.4	7523.7	7552.4
BAJ FINANCE	2955.4	2995.2	3026.9	3066.7	3098.3
BHARTIARTL	307.5	312.0	318.7	323.2	329.9
BPCL	328.5	332.4	337.4	341.3	346.3
BRITANNIA	2969.5	2980.3	2997.1	3007.9	3024.7
CIPLA	550.5	556.1	566.0	571.6	581.6
COALINDIA	249.1	252.3	254.2	257.4	259.3
DRREDDY	2786.3	2804.2	2818.4	2836.4	2850.6
EICHER MOT	20011.7	20163.3	20356.2	20507.8	20700.6
GAIL	328.2	333.8	337.4	343.0	346.6
GRASIM	849.0	859.2	866.5	876.7	884.0
HCLTECH	1088.2	1095.1	1103.5	1110.4	1118.9
HDFC	1906.9	1920.8	1943.5	1957.4	1980.2
HDFC BANK	2210.6	2227.9	2259.0	2276.3	2307.4
HEROMOTOCO	2547.8	2592.9	2660.1	2705.3	2772.5
HINDALCO	196.6	198.5	200.7	202.6	204.8
HINDUNILVR	1726.9	1735.5	1741.8	1750.4	1756.7
IBULHSGFIN	699.6	721.9	745.3	767.6	790.9
ICICI BANK	390.3	393.4	396.7	399.8	403.0
INDUSINDBK	1599.8	1625.6	1670.8	1696.6	1741.8
INFRA TEL	285.6	289.8	296.7	300.9	307.8
INFY	713.9	721.1	725.5	732.7	737.1
IOC	145.0	147.2	149.1	151.3	153.1
ITC	300.0	301.7	303.3	305.0	306.5
JSW STEEL	282.8	285.5	290.1	292.8	297.4
KOTAK BANK	1340.8	1348.1	1358.3	1365.6	1375.9
LT	1321.5	1334.9	1349.9	1363.3	1378.3
M&M	656.4	661.1	668.5	673.2	680.6
MARUTI	6765.0	6907.0	7147.9	7289.9	7530.8
NTPC	131.5	132.6	134.3	135.4	137.2
ONGC	154.7	159.2	162.1	166.6	169.5
POWERGRID	190.7	191.9	193.2	194.4	195.7
RELIANCE	1334.0	1348.9	1361.0	1375.9	1388.0
SBIN	298.7	302.0	307.9	311.1	317.0
SUN PHARMA	445.3	456.9	464.7	476.3	484.1
TATAMOTORS	227.0	229.3	232.6	234.9	238.2
TATA STEEL	510.8	517.1	527.8	534.1	544.8
TCS	2120.1	2137.6	2151.5	2169.0	2183.0
TECHM	796.4	800.7	804.3	808.6	812.2
TITAN	1112.1	1120.8	1128.8	1137.5	1145.4
ULTRACEMCO	4153.8	4176.0	4204.3	4226.5	4254.8
UPL	923.9	933.3	939.2	948.6	954.5
VEDL	172.7	173.8	175.1	176.1	177.4
WIPRO	284.7	287.9	289.9	293.1	295.0
YES BANK	221.8	227.3	236.0	241.4	250.1
ZEEL	388.4	398.8	410.4	420.8	432.4

TEAM

ANALYST	DESIGNATION	EMAIL	TELEPHONE
Aditya Agarwal	Head – Technical Research	aditya@way2wealth.com	+91 22-61462955
Monil Shah, CMT	Sr. Technical Analyst – Equity & Forex	monilshah@way2wealth.com	+91 22-61462980
Harish Jujarey	Sr. Technical Analyst – Commodity	harishjujarey@way2wealth.com	+91 22-61462952
Mohit Agarwal	Technical Analyst – Forex & Commodity	mohitk@way2wealth.com	+91 22-61462954

Disclaimer

Analyst Certification: I, Monil Shah, CMT the research analyst and author of this report, hereby certify that the views expressed in this research report accurately reflect our personal views about the subject securities, issuers, products, sectors or industries. It is also certified that no part of the compensation of the analyst(s) was, is, or will be directly or indirectly related to the inclusion of specific recommendations or views in this research. The analyst(s), principally responsible for the preparation of this research report, receives compensation based on overall revenues of the company (Way2Wealth Brokers Private Limited, hereinafter referred to as Way2Wealth) and has taken reasonable care to achieve and maintain independence and objectivity in making any recommendations.

It is confirmed that Monil Shah, CMT the author of this report has not received any compensation from the companies mentioned in the report in the preceding 12 months. Our research professionals are paid in part based on the profitability of Way2Wealth, which include earnings from other business. Neither Way2Wealth nor its directors, employees, agents or representatives shall be liable for any damages whether direct or indirect, incidental, special or consequential including lost revenue or lost profits that may arise from or in connection with the use of the information contained in this report.

This report is for the personal information of the authorized recipient and does not construe to be any investment, legal or taxation advice to you. Way2Wealth is not soliciting any action based upon it. Nothing in this research shall be construed as a solicitation to buy or sell any security or product, or to engage in or refrain from engaging in any such transaction. The contents of this material are general and are neither comprehensive nor appropriate for every individual and are solely for the informational purposes of the readers. This material does not take into account the specific objectives, financial situation or needs of an individual/s or a Corporate/s or any entity/s.

This research has been prepared for the general use of the clients of the Way2Wealth and must not be copied, either in whole or in part, or distributed or redistributed to any other person in any form. If you are not the intended recipient you must not use or disclose the information in this research in any way. Though disseminated to all the customers simultaneously, not all customers may receive this report at the same time. Way2Wealth will not treat recipients as customers by virtue of their receiving this report. The distribution of this document in other jurisdictions may be restricted by the law applicable in the relevant jurisdictions and persons into whose possession this document comes should inform themselves about, and observe any such restrictions.

The report is based upon information obtained from sources believed to be reliable, but we do not make any representation or warranty that it is accurate, complete or up to date and it should not be relied upon as such. Way2Wealth or any of its affiliates or employees makes no warranties, either express or implied of any kind regarding any matter pertaining to this report, including, but not limited to warranties of suitability, fitness for a particular purpose, accuracy, timeliness, completeness or non-infringement. We accept no obligation to correct or update the information or opinions in it. Way2Wealth or any of its affiliates or employees shall not be in any way responsible for any loss or damage that may arise to any person from any inadvertent error in the information contained in this report. The recipients of this report should rely on their own investigations. In no event shall Way2Wealth be liable for any damages of any kind, including, but not limited to, indirect, special, incidental, consequential, punitive, lost profits, or lost opportunity, whether or not Way2Wealth has advised of the possibility of such damages.

This material contains statements that are forward-looking; such statements are based upon the current beliefs and expectations and are subject to significant risks and uncertainties. Actual results may differ from those set forth in the forward-looking statements. These uncertainties include but are not limited to: the risk of adverse movements or volatility in the securities markets or in interest or foreign exchange rates or indices; adverse impact from an economic slowdown; downturn in domestic or foreign securities and trading conditions or markets; increased competition; unfavourable political and diplomatic developments; change in the governmental or regulatory policies; failure of a corporate event and such others. This is not an offer to buy or sell or a solicitation of an offer to buy or sell any security or instrument or to participate in any particular trading strategy. No part of this material may be copied or duplicated in any form by any means or redistributed without the written consent of Way2Wealth. In no event shall any reader publish, retransmit, redistribute or otherwise reproduce any information provided by Way2Wealth in any format to anyone. Way2Wealth and its affiliates, officers, directors and employees including persons involved in the preparation or issuance of this report may from time to time have interest in securities / positions, financial or otherwise in the securities related to the information contained in this report.