

MCX LEAD APRIL



- In line with expectation lead prices witnessing minor bounce from the lows and surged till 135.40 and settled at 135.15 gaining 0.82% in the last trading session.
- Lead price has penetrated the down ward slating trend line resistance and gave fresh bullish break out in yesterday's session. So going forward, it is likely witness strong bounce till the 138 then 142 levels in coming sessions. While on the lower side the long trend line of 132 will continue to holds a crucial support.
- The momentum indicator RSI and Stochastic are also slowly recovering from the oversold zone are indicating positive signs.
- Thus for the day if we continue to recommend buying around 135 levels for upside targets of 138.

Today's Actionable

Commodity	Expiry	Action	Entry	Target	Stop loss
Lead	Apr	Buy	Around 135	138	132.50
Cotton	May	Buy	Around 22420	22800	22150
CPO	May	Buy	Above 548	560	541

MCX

Commodity	Expiry	Close (Rs)	Change	% Change
GOLD	05 JUN 2019	31911	93	0.29
SILVER	03 MAY 2019	37457	-25	-0.07
COPPER	30 APR 2019	444.4	-6.6	-1.46
CRUDEOIL	20 MAY 2019	4637	8	0.17
ZINC	30 APR 2019	231.8	3.95	1.73
LEAD	30 APR 2019	135.1	1.05	0.78
ALUMINIUM	30 APR 2019	153.05	0.2	0.13
NICKEL	30 APR 2019	862.6	-4.5	-0.52
NATURALGAS	25 APR 2019	175.9	2.7	1.56
MENTHAOIL	31 MAY 2019	1380.2	-3.5	-0.25

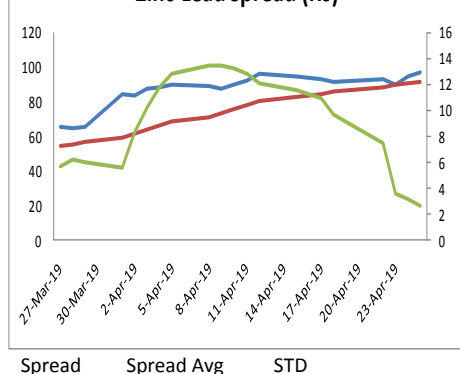
NCDEX

Commodity	Expiry	Close (Rs)	Change	% Change
GUARGUM5	20 MAY 2019	8766	-10	-0.11
GUARSEED10	20 MAY 2019	4363.5	-4	-0.09
CHANA	20 MAY 2019	4379	-44	-0.99
CASTOR	20 MAY 2019	5780	-22	-0.38
RMSEED	20 MAY 2019	3788	-13	-0.34
SYBEANIDR	20 MAY 2019	3727	2	0.05
SYOREF	20 MAY 2019	745.1	1.7	0.23
JEERAUNJHA	20 MAY 2019	17100	-125	-0.73
TMCFGRNZM	20 MAY 2019	6534	148	2.32
COCUDAKL	20 MAY 2019	2490.5	24.5	0.99

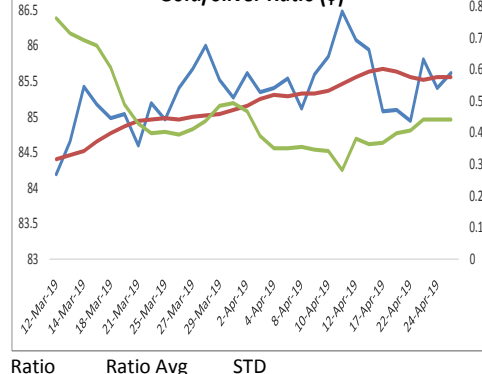
GLOBAL

Exchange	Commodity	Close (\$)	Change	% Change
Comex	Gold	1277.77	2.11	0.17%
Comex	Silver	14.965	0.026	0.17%
Nymex	Crude Oil WTI	65.72	1.65	2.62%
ICE	Brent Oil	74.27	2.3	3.20%
Nymex	Natural Gas	2.55	0.018	0.75%
LME	Copper	6347	-97	-1.51%
LME	Lead	1930	6.25	0.32%
LME	Zinc	2747	-2	-0.07%
LME	Aluminium	1857	-14.75	-0.79%
LME	Nickel	12327	-102.5	-0.82%

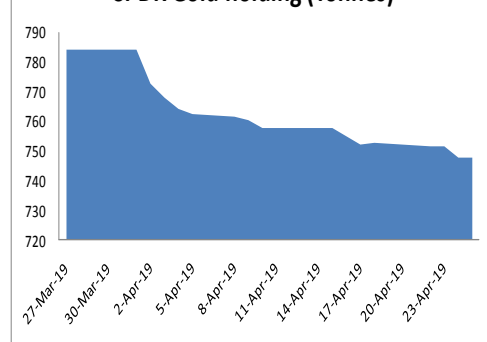
Zinc-Lead Spread (Rs)



Gold/Silver Ratio (\$)



SPDR Gold holding (Tonnes)



ECONOMIC DATA & EVENTS					
TIME(IST)	COUNTRY	DATA & EVENTS	ACTUAL	FORECAST	PREVIOUS
5:20 AM	US	Industrial Production (MoM) (Mar)	-	0.0	0.7
6:00 PM	US	GDP (QoQ) (Q1)	-	0	0
7:30 PM	USD	Michigan Consumer Sentiment (Apr)	-	9710.0%	9690.0%
-	-	-	-	-	-
-	-	-	-	-	-
-	-	-	-	-	-
-	-	-	-	-	-
-	-	-	-	-	-
-	-	-	-	-	-

DAILY PIVOT LEVELS							
Symbol	Expiry	LTP	S2	S1	Pivot	R1	R2
GOLD	05 JUN 2019	31911	31559	31735	31880	32056	32201
SILVER	03 MAY 2019	37457	37060	37259	37453	37652	37846
COPPER	30 APR 2019	444.4	439.6	442.0	446.5	448.9	453.3
CRUDEOIL	20 MAY 2019	4637	4588	4612	4641	4665	4694
ZINC	30 APR 2019	231.8	225.8	228.8	230.4	233.4	235.1
LEAD	30 APR 2019	135.1	132.4	133.8	134.6	135.9	136.7
ALUMINIUM	30 APR 2019	153.1	151.4	152.2	152.9	153.7	154.4
NICKEL	30 APR 2019	862.6	857.5	860.0	863.7	866.2	869.9
NATURALGAS	25 APR 2019	175.9	168.8	172.3	174.3	177.8	179.8
MENTHAOIL	31 MAY 2019	1380.2	1363.0	1371.6	1380.8	1389.4	1398.6
GUARGUM5	20 MAY 2019	8766	8675	8721	8785	8831	8895
GUARGUM5	20 JUN 2019	8911	8820	8865	8928	8973	9036
GUARSEED10	20 MAY 2019	4364	4326	4345	4374	4393	4422
GUARSEED10	20 JUN 2019	4424	4387	4406	4433	4452	4479
CHANA	20 MAY 2019	4379	4282	4331	4382	4431	4482
CHANA	20 JUN 2019	4432	4301	4366	4426	4491	4551
CASTOR	20 MAY 2019	5780	5651	5715	5817	5881	5983
CASTOR	20 JUN 2019	5920	5781	5851	5955	6025	6129
RMSEED	20 MAY 2019	3788	3768	3778	3791	3801	3814
RMSEED	20 JUN 2019	3830	3811	3821	3832	3842	3853
SYBEANIDR	20 MAY 2019	3727	3694	3711	3727	3744	3760
SYBEANIDR	20 JUN 2019	3770	3741	3756	3772	3787	3803
SYOREF	20 MAY 2019	745.1	734.4	739.8	744.1	749.5	753.8
SYOREF	20 JUN 2019	733.2	728.5	730.9	733.4	735.8	738.3
COCUDAKL	20 MAY 2019	2491	2421	2456	2480	2515	2539
COCUDAKL	20 JUN 2019	2506	2440	2473	2494	2527	2548
JEERAUNJHA	20 MAY 2019	17100	16853	16977	17163	17287	17473
JEERAUNJHA	20 JUN 2019	17150	16880	17015	17235	17370	17590
TMCFGRNZM	20 MAY 2019	6534	6326	6430	6514	6618	6702
TMCFGRNZM	20 JUN 2019	6616	6432	6524	6602	6694	6772
DHANIYA	20 JUN 2019	7577	7410	7493	7585	7668	7760
DHANIYA	20 MAY 2019	7471	7311	7391	7485	7565	7659
COTTON	28 JUN 2019	22640	22500	22570	22630	22700	22760
COTTON	31 MAY 2019	22400	22220	22310	22380	22470	22540

TEAM

ANALYST	DESIGNATION	EMAIL	TELEPHONE
Aditya Agarwal	Head – Technical Research	aditya@way2wealth.com	+91 22-61462955
Harish Jujarey	Sr. Technical Analyst – Forex & Commodity	harishjujarey@way2wealth.com	+91 22-61462952
Monil Shah, CMT	Sr. Technical Analyst – Equity & Forex	monilshah@way2wealth.com	+91 22-61462980
Mohit Agarwal	Technical Analyst – Forex & Commodity	mohitk@way2wealth.com	+91 22-61462954

Disclaimer

Analyst Certification: I, Harish Jujarey, the research analyst and author of this report, hereby certify that the views expressed in this research report accurately reflect our personal views about the subject securities, issuers, products, sectors or industries. It is also certified that no part of the compensation of the analyst(s) was, is, or will be directly or indirectly related to the inclusion of specific recommendations or views in this research. The analyst(s), principally responsible for the preparation of this research report, receives compensation based on overall revenues of the company (Way2Wealth Brokers Private Limited, hereinafter referred to as Way2Wealth) and has taken reasonable care to achieve and maintain independence and objectivity in making any recommendations.

It is confirmed that Harish Jujarey, the author of this report has not received any compensation from the companies mentioned in the report in the preceding 12 months. Our research professionals are paid in part based on the profitability of Way2Wealth, which include earnings from other business. Neither Way2Wealth nor its directors, employees, agents or representatives shall be liable for any damages whether direct or indirect, incidental, special or consequential including lost revenue or lost profits that may arise from or in connection with the use of the information contained in this report.

This report is for the personal information of the authorized recipient and does not construe to be any investment, legal or taxation advice to you. Way2Wealth is not soliciting any action based upon it. Nothing in this research shall be construed as a solicitation to buy or sell any security or product, or to engage in or refrain from engaging in any such transaction. The contents of this material are general and are neither comprehensive nor appropriate for every individual and are solely for the informational purposes of the readers. This material does not take into account the specific objectives, financial situation or needs of an individual/s or a Corporate/s or any entity/s.

This research has been prepared for the general use of the clients of the Way2Wealth and must not be copied, either in whole or in part, or distributed or redistributed to any other person in any form. If you are not the intended recipient you must not use or disclose the information in this research in any way. Though disseminated to all the customers simultaneously, not all customers may receive this report at the same time. Way2Wealth will not treat recipients as customers by virtue of their receiving this report. The distribution of this document in other jurisdictions may be restricted by the law applicable in the relevant jurisdictions and persons into whose possession this document comes should inform themselves about, and observe any such restrictions.

The report is based upon information obtained from sources believed to be reliable, but we do not make any representation or warranty that it is accurate, complete or up to date and it should not be relied upon as such. Way2Wealth or any of its affiliates or employees makes no warranties, either express or implied of any kind regarding any matter pertaining to this report, including, but not limited to warranties of suitability, fitness for a particular purpose, accuracy, timeliness, completeness or non-infringement. We accept no obligation to correct or update the information or opinions in it. Way2Wealth or any of its affiliates or employees shall not be in any way responsible for any loss or damage that may arise to any person from any inadvertent error in the information contained in this report. The recipients of this report should rely on their own investigations. In no event shall Way2Wealth be liable for any damages of any kind, including, but not limited to, indirect, special, incidental, consequential, punitive, lost profits, or lost opportunity, whether or not Way2Wealth has advised of the possibility of such damages.

This material contains statements that are forward-looking; such statements are based upon the current beliefs and expectations and are subject to significant risks and uncertainties. Actual results may differ from those set forth in the forward-looking statements. These uncertainties include but are not limited to: the risk of adverse movements or volatility in the securities markets or in interest or foreign exchange rates or indices; adverse impact from an economic slowdown; downturn in domestic or foreign securities and trading conditions or markets; increased competition; unfavourable political and diplomatic developments; change in the governmental or regulatory policies; failure of a corporate event and such others. This is not an offer to buy or sell or a solicitation of an offer to buy or sell any security or instrument or to participate in any particular trading strategy. No part of this material may be copied or duplicated in any form by any means or redistributed without the written consent of Way2Wealth. In no event shall any reader publish, retransmit, redistribute or otherwise reproduce any information provided by Way2Wealth in any format to anyone. Way2Wealth and its affiliates, officers, directors and employees including persons involved in the preparation or issuance of this report may from time to time have interest in securities / positions, financial or otherwise in the securities related to the information contained in this report.