

### MCX ALUMINIUM DECEMBER



- Aluminium is one such base metal which has shown string outperformance recently and rallied from 149 to 165.30 level since October 2020. Post the same prices have went into sideways to negative zone which will probably digest the earlier gains.
- The above daily chart shows that prices tested the black upward moving trend line resistance as well as channel resistance as shown in blue color. After such kind of sharp rise we can witness some profit booking in dragging fashion which will provide buying opportunity.
- MACD which is showing negative signal shows that its time to see consolidation phase. Overbought state of Williams R% also suggests that once it touches the zone of -50 to -65 levels, buying opportunity likely to emerge.
- In short, looking at the candlesticks formation of last few days we can expect negative move towards 160-159.50 level where 20 days of EMA is placed which will provide buying opportunity. On downside 159.00 & 157.50 will act as support levels.

### Today's Actionable

Commodity	Expiry	Action	Entry	Target	Stop loss
RM SEED	Dec	Sell	Around 5870	5760	5930
SYOREF	Dec	Sell	Around 1050	1030	1062
Silver	Mar	Sell	Around 61900	60400	63000

### MCX

Commodity	Expiry	Close (Rs)	Change	% Change
GOLD	04 DEC 2020	48517	4	0.01
SILVER	04 DEC 2020	59873	30	0.05
CRUDEOIL	18 DEC 2020	3324	-76	-2.24
NATURALGAS	28 DEC 2020	216.7	-2.1	-0.96
COPPER	31 DEC 2020	569.85	8.7	1.55
NICKEL	31 DEC 2020	1221.7	17.3	1.44
ALUMINIUM	31 DEC 2020	162.95	0.7	0.43
LEAD	31 DEC 2020	158.75	0.7	0.44
ZINC	31 DEC 2020	217.6	0.65	0.3
COTTON	31 DEC 2020	19920	-310	-1.53

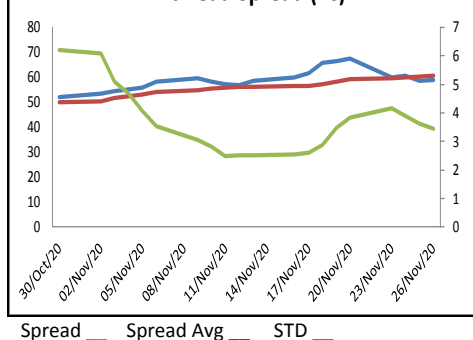
### NCDEX

Commodity	Expiry	Close (Rs)	Change	% Change
GUARGUM5	18 DEC 2020	5817	-133	-2.24
GUARSEED10	18 DEC 2020	3900	-49	-1.24
CHANA	18 DEC 2020	5055	-110	-2.13
CASTOR	18 DEC 2020	4618	-64	-1.37
RMSEED	18 DEC 2020	5815	-124	-2.09
SYBEANIDR	18 DEC 2020	4350	-60	-1.36
SYOREF	18 DEC 2020	1040.8	-13.3	-1.26
COCUDAKL	18 DEC 2020	2119	7	0.33
JEERAUNJHA	18 DEC 2020	13785	-225	-1.61
TMCFGRNZM	18 DEC 2020	5504	-50	-0.9

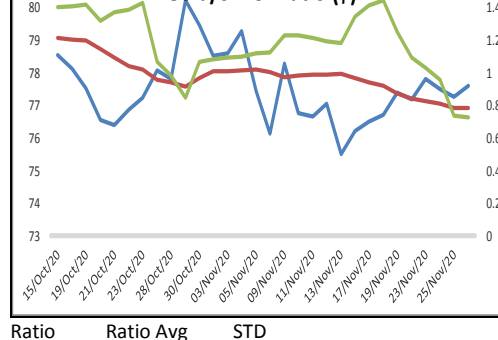
### GLOBAL

Exchange	Commodity	Close (\$)	Change	% Change
Comex	Gold	1,808.50	3.00	0.17%
Comex	Silver	23.31	-0.06	-0.24%
Nymex	Crude Oil WTI	45.00	-0.71	-1.55%
ICE	Brent Oil	47.77	-0.76	-1.57%
Nymex	Natural Gas	2.93	-0.03	-1.11%
LME	Copper	7,421.25	93.50	1.28%
LME	Nickel	16,305.00	225.00	1.40%
LME	Aluminium	1,978.50	10.75	0.55%
LME	Lead	2,043.25	17.25	0.85%
LME	Zinc	2,756.25	-1.75	-0.06%

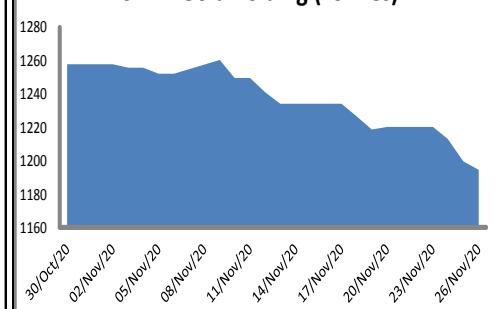
### Zinc-Lead Spread (Rs)



### Gold/Silver Ratio (\$)



### SPDR Gold holding (Tonnes)



ECONOMIC DATA & EVENTS						
TIME(IST)	COUNTRY	DATA & EVENTS	ACTUAL	FORECAST	PREVIOUS	
12:30 PM	GB	Nationwide HPI (YoY)	-	5.90%	5.80%	
12:30 PM	GB	Nationwide HPI (MoM)	-	0.20%	0.80%	
3:30 PM	EU	Business and Consumer Survey (Nov)	-	86.5	90.9	
3:30 PM	EU	Consumer Confidence (Nov)	-	-17.6	-15.5	
3:30 PM	EU	Services Sentiment (Nov)	-	-15.5	-11.8	
3:30 PM	EU	Industrial Sentiment (Nov)	-	-10.5	-9.6	
5:30 PM	IN	GDP Quarterly (YoY) (Q2)	-	-8.80%	-23.90%	
-	-	-	-	-	-	
-	-	-	-	-	-	
DAILY PIVOT LEVELS						
Symbol	Expiry	LTP	S2	S1	Pivot	R1 R2
GOLD	INTL. SPOT (\$)	1808	1798	1803	1811	1816 1823
GOLD	04 DEC 2020	48517	48206	48361	48581	48736 48956
SILVER	INTL. SPOT (\$)	23.32	23.00	23.16	23.32	23.48 23.63
SILVER	04 DEC 2020	59873	59046	59460	59863	60277 60680
CRUDEOIL	18 DEC 2020	3324	3247	3285	3345	3383 3443
NATURALGAS	28 DEC 2020	216.7	213.5	215.1	216.8	218.4 220.1
COPPER	31 DEC 2020	569.9	560.5	565.2	568.2	572.9 575.9
NICKEL	31 DEC 2020	1221.7	1195.3	1208.5	1215.7	1228.9 1236.1
ALUMINIUM	31 DEC 2020	163.0	161.9	162.4	162.8	163.4 163.8
LEAD	31 DEC 2020	158.8	157.0	157.9	158.6	159.5 160.2
ZINC	31 DEC 2020	217.6	215.4	216.5	218.2	219.3 221.0
COTTON	31 DEC 2020	19920	19647	19783	20037	20173 20427
MENTHAOIL	31 DEC 2020	952.2	940.3	946.3	951.6	957.6 962.9
CPO	27 NOV 2020	890.4	861.8	876.1	892.5	906.8 923.2
CPO	31 DEC 2020	866.9	838.2	852.6	877.6	892.0 917.0
GUARGUM5	18 DEC 2020	5817	5674	5746	5861	5933 6048
GUARGUM5	20 JAN 2021	5897	5760	5829	5938	6007 6116
GUARSEED10	18 DEC 2020	3900	3847	3873	3917	3943 3987
GUARSEED10	20 JAN 2021	3948	3901	3925	3963	3987 4025
CHANA	18 DEC 2020	5055	4926	4991	5075	5140 5224
CHANA	20 JAN 2021	5099	4986	5043	5126	5183 5266
CASTOR	18 DEC 2020	4618	4542	4580	4648	4686 4754
CASTOR	20 JAN 2021	4654	4598	4626	4676	4704 4754
RMSEED	18 DEC 2020	5815	5702	5758	5850	5906 5998
RMSEED	20 JAN 2021	5765	5651	5708	5798	5855 5945
SYBEANIDR	18 DEC 2020	4350	4263	4307	4358	4402 4453
SYBEANIDR	20 JAN 2021	4346	4266	4306	4360	4400 4454
SYOREF	18 DEC 2020	1040.8	1015.3	1028.0	1042.8	1055.5 1070.3
SYOREF	20 JAN 2021	1041.7	1016.8	1029.3	1042.6	1055.1 1068.4
COCUDAKL	18 DEC 2020	2119	2066	2093	2131	2158 2196
COCUDAKL	20 JAN 2021	2144	2093	2119	2157	2183 2221
JEERAUNJHA	18 DEC 2020	13785	13575	13680	13865	13970 14155
JEERAUNJHA	20 JAN 2021	13995	13852	13923	14052	14123 14252
TMCFGRNZM	18 DEC 2020	5504	5451	5477	5519	5545 5587
TMCFGRNZM	20 APR 2021	5882	5779	5831	5875	5927 5971

### TEAM

ANALYST	DESIGNATION	EMAIL	TELEPHONE
Monil Shah, CMT	AVP – Technical Analyst – Equity & Forex	<a href="mailto:monilshah@way2wealth.com">monilshah@way2wealth.com</a>	+9122-61462980
Harish Jujarey	Sr. Technical Analyst – Equity, Commodity & Forex	<a href="mailto:harishjujarey@way2wealth.com">harishjujarey@way2wealth.com</a>	+9122-61462981
Rakesh Gandhi	Technical Analyst – Forex & Commodity	<a href="mailto:rakeshgandhi@way2wealth.com">rakeshgandhi@way2wealth.com</a>	+9122-61462982

### Disclaimer

**Analyst Certification:** I, Rakesh Gandhi, the research analyst and author of this report, hereby certify that the views expressed in this research report accurately reflect our personal views about the subject securities, issuers, products, sectors or industries. It is also certified that no part of the compensation of the analyst(s) was, is, or will be directly or indirectly related to the inclusion of specific recommendations or views in this research. The analyst(s), principally responsible for the preparation of this research report, receives compensation based on overall revenues of the company (Way2Wealth Brokers Private Limited, hereinafter referred to as Way2Wealth) and has taken reasonable care to achieve and maintain independence and objectivity in making any recommendations.

It is confirmed that Rakesh Gandhi, the author of this report has not received any compensation from the companies mentioned in the report in the preceding 12 months. Our research professionals are paid in part based on the profitability of Way2Wealth, which include earnings from other business. Neither Way2Wealth nor its directors, employees, agents or representatives shall be liable for any damages whether direct or indirect, incidental, special or consequential including lost revenue or lost profits that may arise from or in connection with the use of the information contained in this report.

This report is for the personal information of the authorized recipient and does not construe to be any investment, legal or taxation advice to you. Way2Wealth is not soliciting any action based upon it. Nothing in this research shall be construed as a solicitation to buy or sell any security or product, or to engage in or refrain from engaging in any such transaction. The contents of this material are general and are neither comprehensive nor appropriate for every individual and are solely for the informational purposes of the readers. This material does not take into account the specific objectives, financial situation or needs of an individual/s or a Corporate/s or any entity/s.

This research has been prepared for the general use of the clients of the Way2Wealth and must not be copied, either in whole or in part, or distributed or redistributed to any other person in any form. If you are not the intended recipient you must not use or disclose the information in this research in any way. Though disseminated to all the customers simultaneously, not all customers may receive this report at the same time. Way2Wealth will not treat recipients as customers by virtue of their receiving this report. The distribution of this document in other jurisdictions may be restricted by the law applicable in the relevant jurisdictions and persons into whose possession this document comes should inform themselves about, and observe any such restrictions.

The report is based upon information obtained from sources believed to be reliable, but we do not make any representation or warranty that it is accurate, complete or up to date and it should not be relied upon as such. Way2Wealth or any of its affiliates or employees makes no warranties, either express or implied of any kind regarding any matter pertaining to this report, including, but not limited to warranties of suitability, fitness for a particular purpose, accuracy, timeliness, completeness or non-infringement. We accept no obligation to correct or update the information or opinions in it. Way2Wealth or any of its affiliates or employees shall not be in any way responsible for any loss or damage that may arise to any person from any inadvertent error in the information contained in this report. The recipients of this report should rely on their own investigations. In no event shall Way2Wealth be liable for any damages of any kind, including, but not limited to, indirect, special, incidental, consequential, punitive, lost profits, or lost opportunity, whether or not Way2Wealth has advised of the possibility of such damages.

This material contains statements that are forward-looking; such statements are based upon the current beliefs and expectations and are subject to significant risks and uncertainties. Actual results may differ from those set forth in the forward-looking statements. These uncertainties include but are not limited to: the risk of adverse movements or volatility in the securities markets or in interest or foreign exchange rates or indices; adverse impact from an economic slowdown; downturn in domestic or foreign securities and trading conditions or markets; increased competition; unfavourable political and diplomatic developments; change in the governmental or regulatory policies; failure of a corporate event and such others. This is not an offer to buy or sell or a solicitation of an offer to buy or sell any security or instrument or to participate in any particular trading strategy. No part of this material may be copied or duplicated in any form by any means or redistributed without the written consent of Way2Wealth. In no event shall any reader publish, retransmit, redistribute or otherwise reproduce any information provided by Way2Wealth in any format to anyone. Way2Wealth and its affiliates, officers, directors and employees including persons involved in the preparation or issuance of this report may from time to time have interest in securities / positions, financial or otherwise in the securities related to the information contained in this report.