

NCDEX GUARGUM OCTOBER



- Guargum October contract rose from the lows near 6150 to the highs of 11470 level during mid of July to end of August 2021. Post that from last few weeks, prices have been trading into consolidation mode.
- The above daily chart shows that Contracting Triangle pattern is under formation as shown by red trendlines. Looking at the overall structure, the upside breakout looks due now. This will be confirmed on move above 10000 level.
- Bollinger Bands have become flat and prices are trading near to the middle bands which is a positive sign. Money flow index has started to reverse on upside from oversold state which also supports bullish move.
- From near term perspective, zone of 9000-8835 looks crucial support zone.
- In short, any move above 10000 level will open target towards 10800 followed by 11470 levels. On downside 9000 is immediate support level.

Today's Actionable

Commodity	Expiry	Action	Entry	Target	Stop loss
Natural Gas	Oct	Buy	Around 405	418	396
Soya Oil	Oct	Buy	Around 1305	1330	1290
RM Seed	Oct	Sell	Around 8500	8360	8600

MCX

Commodity	Expiry	Close (Rs)	Change	% Change
GOLD	05 OCT 2021	46069	74	0.16
SILVER	03 DEC 2021	60634	679	1.13
CRUDEOIL	19 OCT 2021	5579	112	2.05
NATURALGAS	26 OCT 2021	417.7	36.3	9.52
COPPER	29 OCT 2021	719.75	1.55	0.22
NICKEL	29 OCT 2021	1451.7	-10.6	-0.72
ALUMINIUM	29 OCT 2021	230.75	-1.5	-0.65
LEAD	29 OCT 2021	182.55	0.15	0.08
ZINC	29 OCT 2021	260.05	-1.45	-0.55
COTTON	29 OCT 2021	27110	580	2.19

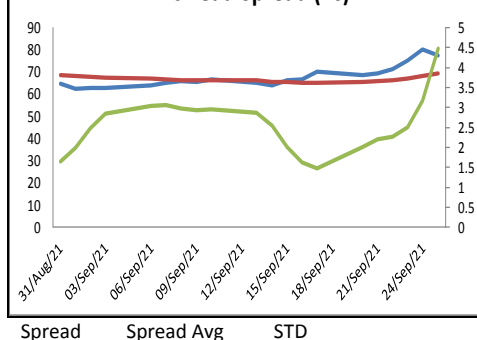
NCDEX

Commodity	Expiry	Close (Rs)	Change	% Change
GUARGUM5	20 OCT 2021	9746	-74	-0.75
GUARSEED10	20 OCT 2021	5848	-84	-1.42
CHANA	20 OCT 2021	5238	2	0.04
CASTOR	18 OCT 2021	6132	-82	-1.32
RMSEED	20 OCT 2021	8470	-50	-0.59
SYBEANIDR	20 OCT 2021	5961	49	0.83
SYOREF	20 OCT 2021	1312.9	3.3	0.25
COCUDAKL	20 DEC 2021	2548	55	2.21
JEERAUNJHA	20 OCT 2021	14525	150	1.04
TMCFGRNZM	20 OCT 2021	7206	70	0.98

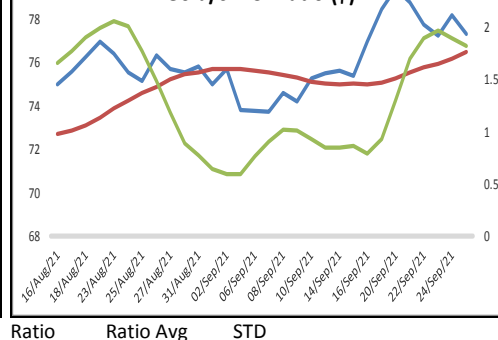
GLOBAL

Exchange	Commodity	Close (\$)	Change	% Change
Comex	Gold	1,750.95	1.15	0.07%
Comex	Silver	22.39	-0.29	-1.27%
Nymex	Crude Oil WTI	74.06	0.76	1.04%
ICE	Brent Oil	78.06	0.81	1.05%
Nymex	Natural Gas	5.10	0.13	2.57%
LME	Copper	9,364.25	79.50	0.86%
LME	Nickel	19,242.50	-182.50	-0.94%
LME	Aluminium	2,924.00	-33.00	-1.12%
LME	Lead	2,164.75	28.00	1.31%
LME	Zinc	3,114.00	22.50	0.73%

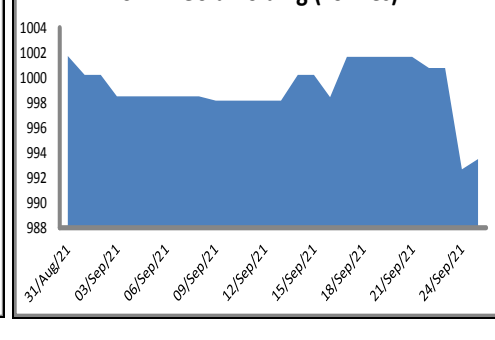
Zinc-Lead Spread (Rs)



Gold/Silver Ratio (\$)



SPDR Gold holding (Tonnes)



ECONOMIC DATA & EVENTS						
TIME(IST)	COUNTRY	DATA & EVENTS	ACTUAL	FORECAST	PREVIOUS	
7:30 PM	US	CB Consumer Confidence (Sep)	-	114.5	113.8	
7:30 PM	US	Fed Chair Powell Testifies	-	-	-	
-	-	-	-	-	-	
-	-	-	-	-	-	
-	-	-	-	-	-	
-	-	-	-	-	-	
-	-	-	-	-	-	
-	-	-	-	-	-	
-	-	-	-	-	-	
DAILY PIVOT LEVELS						
Symbol	Expiry	LTP	S2	S1	Pivot	R1 R2
GOLD	INTL. SPOT (\$)	1752	1735	1744	1752	1760 1769
GOLD	05 OCT 2021	46069	45746	45907	46064	46225 46382
SILVER	INTL. SPOT (\$)	22.64	22.14	22.39	22.62	22.87 23.10
SILVER	03 DEC 2021	60634	59669	60151	60639	61121 61609
CRUDEOIL	19 OCT 2021	5579	5464	5521	5561	5618 5658
NATURALGAS	26 OCT 2021	417.7	374.1	395.9	408.3	430.1 442.5
COPPER	29 OCT 2021	719.8	712.3	716.0	720.1	723.8 727.9
NICKEL	29 OCT 2021	1451.7	1435.4	1443.6	1457.1	1465.3 1478.8
ALUMINIUM	29 OCT 2021	230.8	228.2	229.5	231.0	232.2 233.7
LEAD	29 OCT 2021	182.6	180.9	181.7	182.6	183.4 184.2
ZINC	29 OCT 2021	260.1	256.1	258.1	260.0	262.0 263.9
COTTON	29 OCT 2021	27110	26643	26877	27103	27337 27563
MENTHAOIL	29 OCT 2021	940.5	935.5	938.0	941.0	943.5 946.5
CPO	30 SEP 2021	1128.1	1121.4	1124.7	1130.4	1133.7 1139.4
CPO	29 OCT 2021	1112.1	1096.4	1104.2	1111.1	1118.9 1125.8
GUARGUM5	20 OCT 2021	9746	9495	9620	9840	9965 10185
GUARGUM5	18 NOV 2021	9840	9581	9711	9929	10059 10277
GUARSEED10	20 OCT 2021	5848	5707	5777	5901	5971 6095
GUARSEED10	18 NOV 2021	5833	5707	5770	5870	5933 6033
CHANA	20 OCT 2021	5238	5055	5147	5192	5284 5329
CHANA	18 NOV 2021	0	0	0	0	0 0
CASTOR	18 OCT 2021	6132	6052	6092	6162	6202 6272
CASTOR	17 NOV 2021	6202	6130	6166	6236	6272 6342
RMSEED	20 OCT 2021	8470	8378	8424	8489	8535 8600
RMSEED	18 NOV 2021	8462	8371	8416	8478	8523 8585
SYBEANIDR	20 OCT 2021	5961	5811	5886	5960	6035 6109
SYBEANIDR	18 NOV 2021	5775	5660	5717	5769	5826 5878
SYOREF	20 OCT 2021	1312.9	1283.6	1298.3	1321.6	1336.3 1359.6
SYOREF	18 NOV 2021	1293.1	1268.7	1280.9	1300.7	1312.9 1332.7
COCUDAKL	20 DEC 2021	2548	2420	2484	2536	2600 2652
COCUDAKL	20 JAN 2022	2536	2492	2514	2543	2565 2594
JEERAUNJHA	20 OCT 2021	14525	14248	14387	14538	14677 14828
JEERAUNJHA	18 NOV 2021	14665	14402	14533	14697	14828 14992
TMCFGRNZM	20 OCT 2021	7206	7111	7159	7229	7277 7347
TMCFGRNZM	18 NOV 2021	7366	7287	7327	7373	7413 7459

TEAM

ANALYST	DESIGNATION	EMAIL	TELEPHONE
Harish Jujarey	Sr. Technical Analyst – Equity, Forex & Commodity	harishjujarey@way2wealth.com	+9122-61462981

Disclaimer

Analyst Certification: I, Harish Jujarey, the research analyst and author of this report, hereby certify that the views expressed in this research report accurately reflect our personal views about the subject securities, issuers, products, sectors or industries. It is also certified that no part of the compensation of the analyst(s) was, is, or will be directly or indirectly related to the inclusion of specific recommendations or views in this research. The analyst(s), principally responsible for the preparation of this research report, receives compensation based on overall revenues of the company (Way2Wealth Brokers Private Limited, hereinafter referred to as Way2Wealth) and has taken reasonable care to achieve and maintain independence and objectivity in making any recommendations.

It is confirmed that Harish Jujarey, the author of this report has not received any compensation from the companies mentioned in the report in the preceding 12 months. Our research professionals are paid in part based on the profitability of Way2Wealth, which include earnings from other business. Neither Way2Wealth nor its directors, employees, agents or representatives shall be liable for any damages whether direct or indirect, incidental, special or consequential including lost revenue or lost profits that may arise from or in connection with the use of the information contained in this report.

This report is for the personal information of the authorized recipient and does not construe to be any investment, legal or taxation advice to you. Way2Wealth is not soliciting any action based upon it. Nothing in this research shall be construed as a solicitation to buy or sell any security or product, or to engage in or refrain from engaging in any such transaction. The contents of this material are general and are neither comprehensive nor appropriate for every individual and are solely for the informational purposes of the readers. This material does not take into account the specific objectives, financial situation or needs of an individual/s or a Corporate/s or any entity/s.

This research has been prepared for the general use of the clients of the Way2Wealth and must not be copied, either in whole or in part, or distributed or redistributed to any other person in any form. If you are not the intended recipient you must not use or disclose the information in this research in any way. Though disseminated to all the customers simultaneously, not all customers may receive this report at the same time. Way2Wealth will not treat recipients as customers by virtue of their receiving this report. The distribution of this document in other jurisdictions may be restricted by the law applicable in the relevant jurisdictions and persons into whose possession this document comes should inform themselves about, and observe any such restrictions.

The report is based upon information obtained from sources believed to be reliable, but we do not make any representation or warranty that it is accurate, complete or up to date and it should not be relied upon as such. Way2Wealth or any of its affiliates or employees makes no warranties, either express or implied of any kind regarding any matter pertaining to this report, including, but not limited to warranties of suitability, fitness for a particular purpose, accuracy, timeliness, completeness or non-infringement. We accept no obligation to correct or update the information or opinions in it. Way2Wealth or any of its affiliates or employees shall not be in any way responsible for any loss or damage that may arise to any person from any inadvertent error in the information contained in this report. The recipients of this report should rely on their own investigations. In no event shall Way2Wealth be liable for any damages of any kind, including, but not limited to, indirect, special, incidental, consequential, punitive, lost profits, or lost opportunity, whether or not Way2Wealth has advised of the possibility of such damages.

This material contains statements that are forward-looking; such statements are based upon the current beliefs and expectations and are subject to significant risks and uncertainties. Actual results may differ from those set forth in the forward-looking statements. These uncertainties include but are not limited to: the risk of adverse movements or volatility in the securities markets or in interest or foreign exchange rates or indices; adverse impact from an economic slowdown; downturn in domestic or foreign securities and trading conditions or markets; increased competition; unfavourable political and diplomatic developments; change in the governmental or regulatory policies; failure of a corporate event and such others. This is not an offer to buy or sell or a solicitation of an offer to buy or sell any security or instrument or to participate in any particular trading strategy. No part of this material may be copied or duplicated in any form by any means or redistributed without the written consent of Way2Wealth. In no event shall any reader publish, retransmit, redistribute or otherwise reproduce any information provided by Way2Wealth in any format to anyone. Way2Wealth and its affiliates, officers, directors and employees including persons involved in the preparation or issuance of this report may from time to time have interest in securities / positions, financial or otherwise in the securities related to the information contained in this report.